

Protecting the uplands *for the benefit of us all*

Our
partnership
approach

Since 2003 we have transformed vast areas of the South Pennines Special Area of Conservation, West Pennine Moors and beyond. We do this by delivering innovative evidence-based conservation and communications that promote positive action for the uplands.

Restoration

Conservation of the uplands is as important today as it was in 2003, when Moors for the Future Partnership began its mission to protect the most degraded upland landscape in Europe. Since then, understanding of the need to manage the vital natural capital of the uplands has grown, with increasing frequency of wildfires and flooding, alongside the need to improve water quality.

Over two hundred years ago, industrial pollution and acid rain devastated the Peak District and South Pennine moors. With long-term efforts, the landscape is beginning to recover. Moors for the Future Partnership has transformed over 33 square kilometres of black, degraded peat in the Peak District National Park and South Pennines, using a range of innovative techniques.

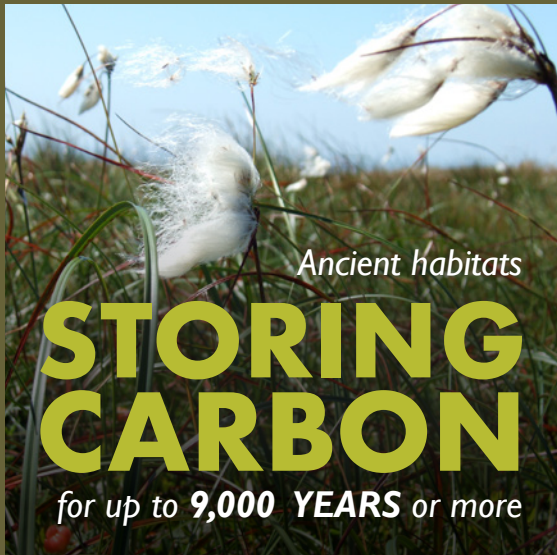
However, this work is far from complete. It is essential to continue to restore and maintain our uplands for the multiple benefits that blanket bogs bring, ranging from natural flood management to health and well-being, and their crucial role in tackling climate change.

The work of Moors for the Future Partnership highlights the importance of upland and peatland conservation for the whole country. There is a pressing need to continue to support the vital work of blanket bog restoration.



*Black Hill, Peak District
before and after conservation
works by the Partnership*





Ancient habitats

STORING CARBON

for up to **9,000 YEARS** or more

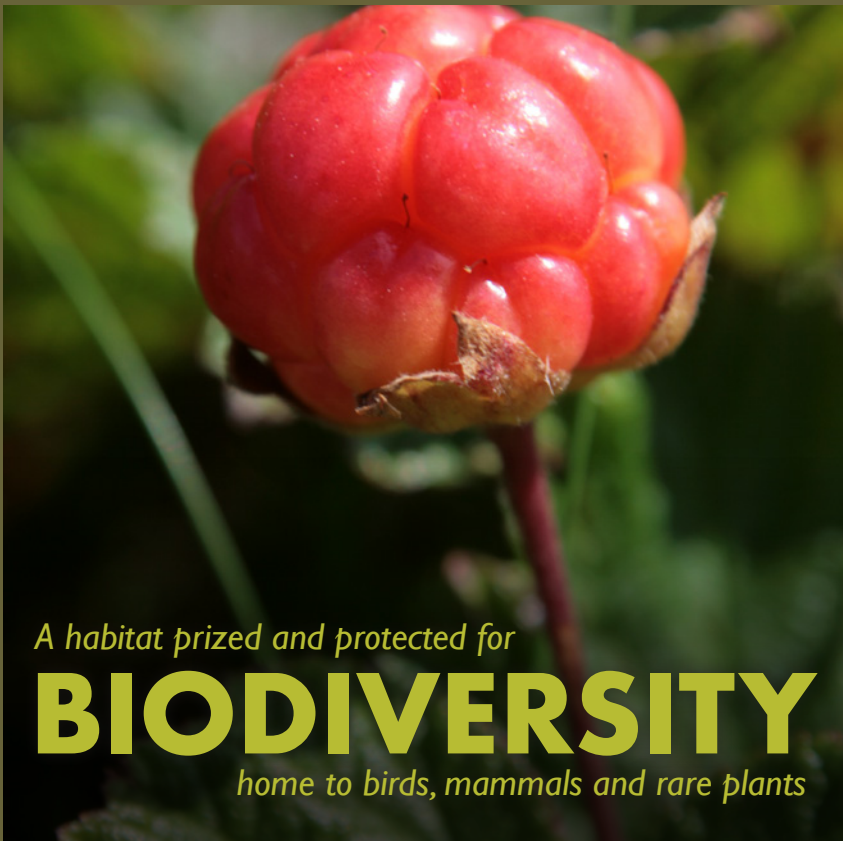
Catchments for 3 water companies who provide drinking water for

19.5 million customers

Reduce the risk and impact of **WILDFIRES**



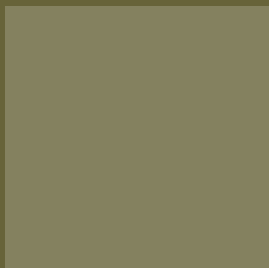
Help reduce the risk of **FLOODING** to downstream communities

A habitat prized and protected for **BIODIVERSITY** home to birds, mammals and rare plants



A fragile upland environment at the frontier of **CLIMATE CHANGE**



HEALTH & WELL-BEING benefits to millions



Why our focus is on healthy **blanket bogs**

Our track record

A dependable, award-winning partnership with a history of success. Seventeen years of action has already transformed the peatlands of the Peak District, South Pennines and West Pennine Moors.

Fundraising

Successful fundraising of £35 million, leading to:

- 33 square kilometres of damaged peatland transformed
- 62,000 tonnes of avoided carbon loss per year
- 3 square kilometres of native clough woodland trees created
- 17 years of data on moorland recovery
- Public engagement with over 25,000 people

How we work

Effective project and programme management:

- delivering across boundaries at a landscape scale
- agile, efficient and outcomes-focussed way of working

Evidence-based:

- robust scientific research and monitoring to give us a growing body of evidence
- bringing stakeholders together to share best practice and advice

Telling compelling stories:

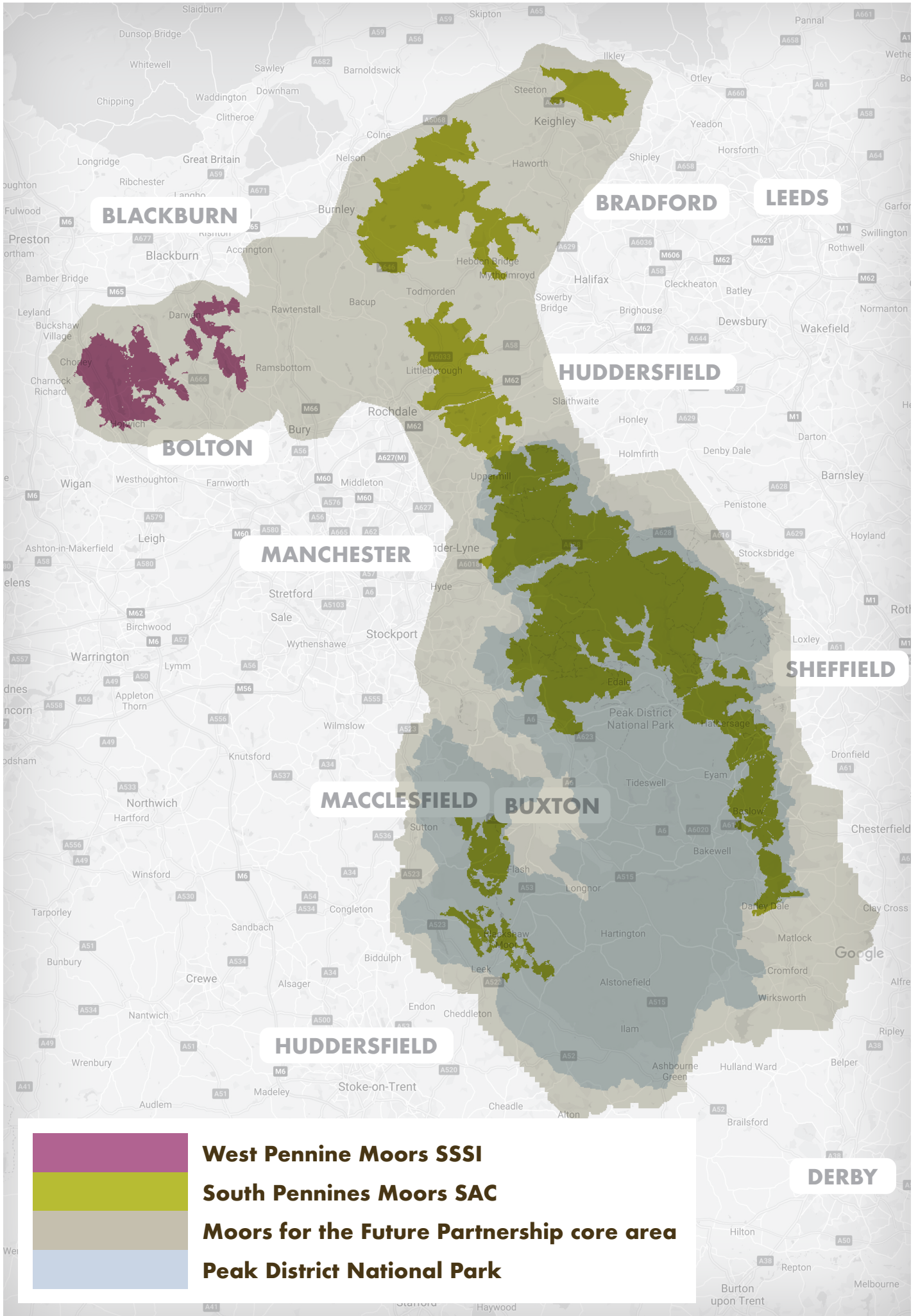
- action to increase awareness of the benefits of the uplands and the need to protect them
- offering advice and a respected voice for conservation in the uplands in policy consultation

Innovation:

- using evidence, feedback and review processes
- innovation is key to our success



Monitoring water quality provides data on the effectiveness of our work



BLACKBURN

BRADFORD

LEEDS

BOLTON

HUDDERSFIELD

MANCHESTER

SHEFFIELD

MACCLESFIELD

BUXTON

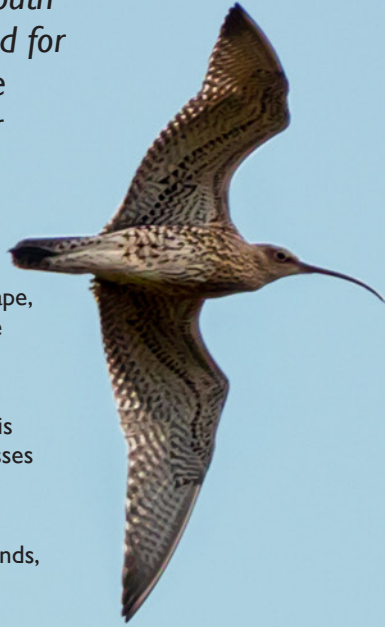
HUDDERSFIELD

DERBY

Our vision

for the Dark Peak and South Pennines

By 2050 the upland landscape of the Dark Peak and South Pennines will be sustainable and resilient. It will be valued for its healthy, functioning peat bogs and ecologically diverse moorland fringe, and good for wildlife and as a place for everyone to enjoy, now and for generations to come.



Our outcomes

- By working with nature to restore the landscape, biodiversity is integrated across all the diverse upland habitats of moorland, farmland, native woodland, rivers and soils
- Blanket bog that was once severely degraded is flourishing again, dominated by sphagnum mosses and actively forming peat
- Increased carbon is stored in upland habitats including healthy deep peat and native woodlands, which helps mitigation of and adaptation to climate change
- Water that flows from the uplands into rivers and our drinking water supply reservoirs is clean and resilient to climate change
- Good catchment management reduces the risk of environmental hazards such as flooding and fire
- People value and protect the landscape as a place to live, work and enjoy for its natural beauty, heritage, access and biodiversity



Healthy blanket bog provides a range of benefits



Our roadmap

We are planning to make the most of all opportunities including:

Legislation and regulation:

- 25 Year Environment Plan
- Natural England Site Improvement Plans
- European Habitats Directive
- Water Framework Directive
- Birds Directive

Partner priorities:

- Water Company Asset Management Plans
- Peak District National Park Management Plan
- Development of South Pennines Park

Join us on our mission

- When you invest in our partnership, we can help you with new challenges and opportunities
- We are a diverse partnership, responsive to stakeholder needs
- Help make a real difference to 450 square kilometres of 'rarer than rainforest' blanket bog
- Be part of the call to lead on the environment and improve biodiversity
- We need to act fast and to do that we need your help



Our future

Become a partner and ensure your outcomes are included in our future work



MOORS FOR THE FUTURE PARTNERSHIP

is led by the Peak District National Park Authority.

Ongoing financial support: Environment Agency, National Trust, Pennine Prospects, RSPB, Severn Trent Water, United Utilities, Yorkshire Water.

Advice and regulation: Natural England, NFU, Moorland Association, Woodland Trust.

Since 2003, we have also worked with a range of additional project funders including private landowners, local authorities, EU LIFE Programme and The National Lottery.



This leaflet was produced by the Moor Business Project, funded by The National Lottery Heritage Fund.

www.moorsforthefuture.org.uk

Get in touch:

Christopher Dean - Head of Programme Delivery
Moors for the Future Partnership, The Moorland Centre, Fieldhead, Edale, Hope Valley, S33 7ZA
t: 01629 816583 e: chris.dean@peakdistrict.gov.uk

© Moors for the Future Partnership 2020

