

# Dark Peak NIA

## Monitoring success and evaluating connectivity

### Biodiversity

#### Blanket bog restoration: Sphagnum moss surveys

Monitoring Sphagnum moss abundance and species composition in relation to blanket bog restoration.



Monitoring the effect of gully blocking on vegetation recovery.

#### Upland hay meadows



Monitoring grassland diversification through restoration, reconnecting upland hay meadow and species rich pastures.

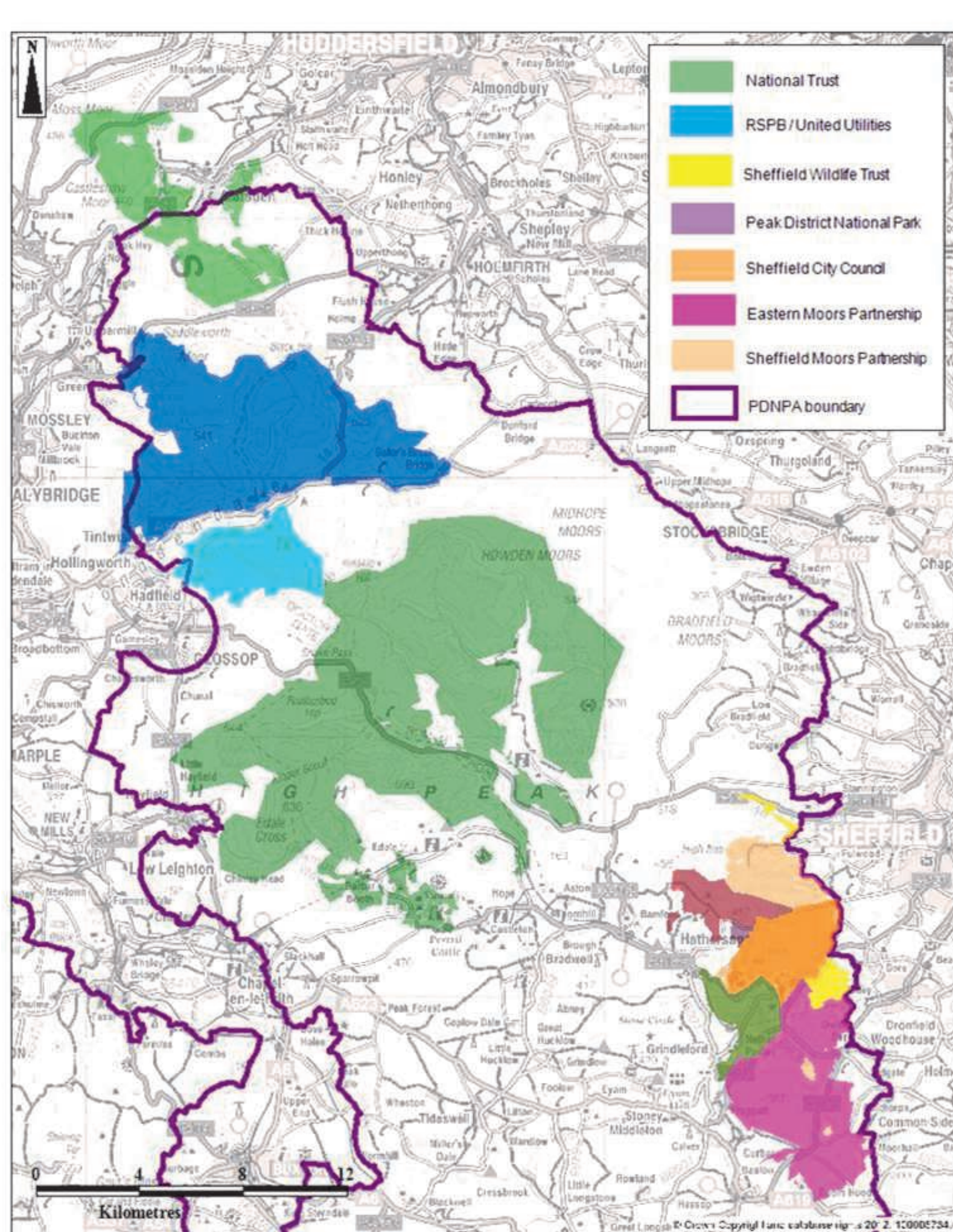
#### Dry heathland

Assessing the response of birds to NIA habitat intervention with an upland breeding bird survey.

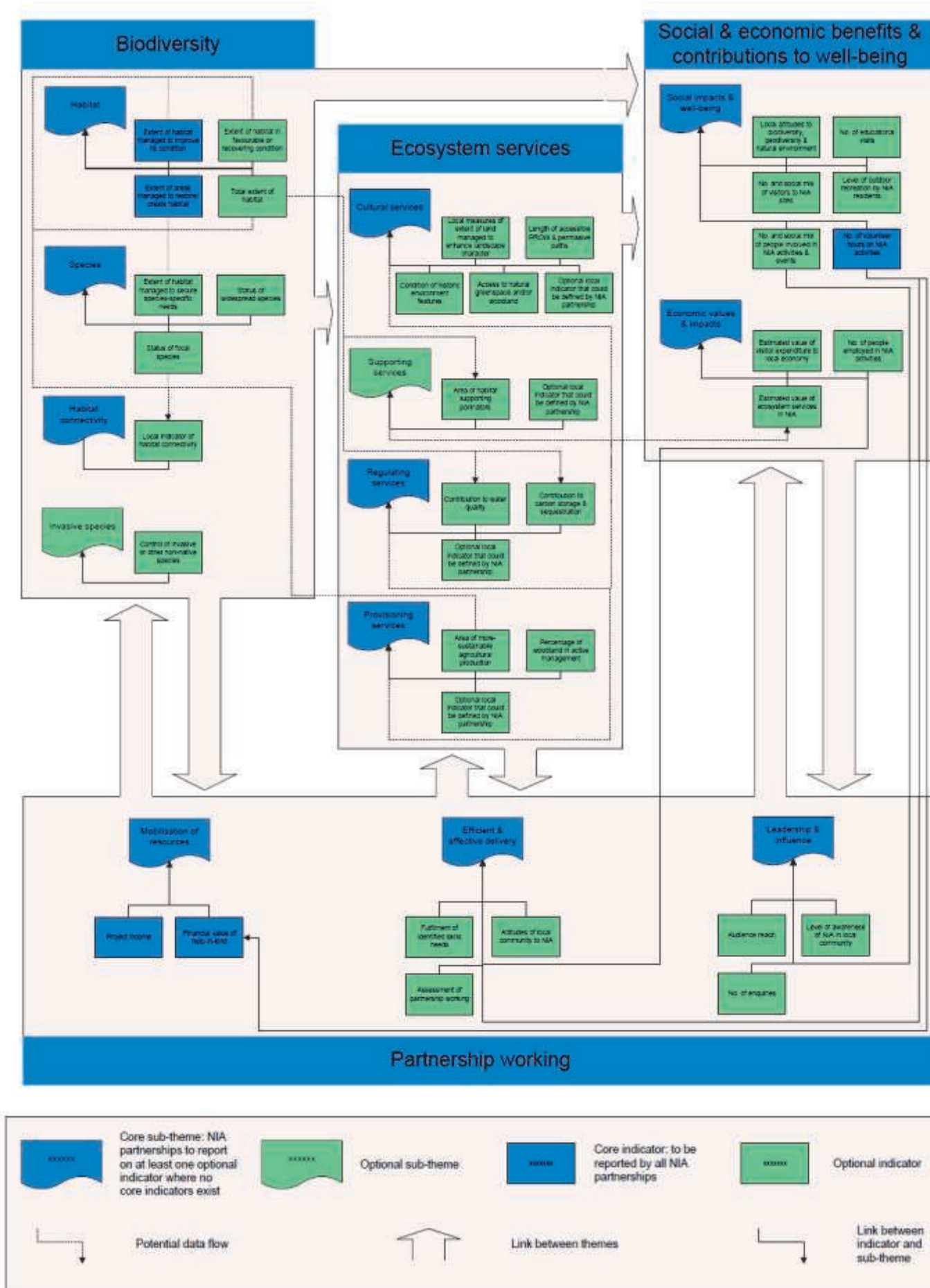
Monitoring botanical diversification through creation & restoration of SAC / SSSI upland heaths.

#### Native woodland creation: woodland bird surveys

Assessing the effect of native upland woodland enhancement on woodland bird populations.



Dark Peak Nature Improvement Area boundary (June, 2013).



Monitoring and evaluation framework (NE, 2012)

NIAs are large, discrete areas that will deliver a step change in nature conservation, where a local partnership has a shared vision for their natural environment.

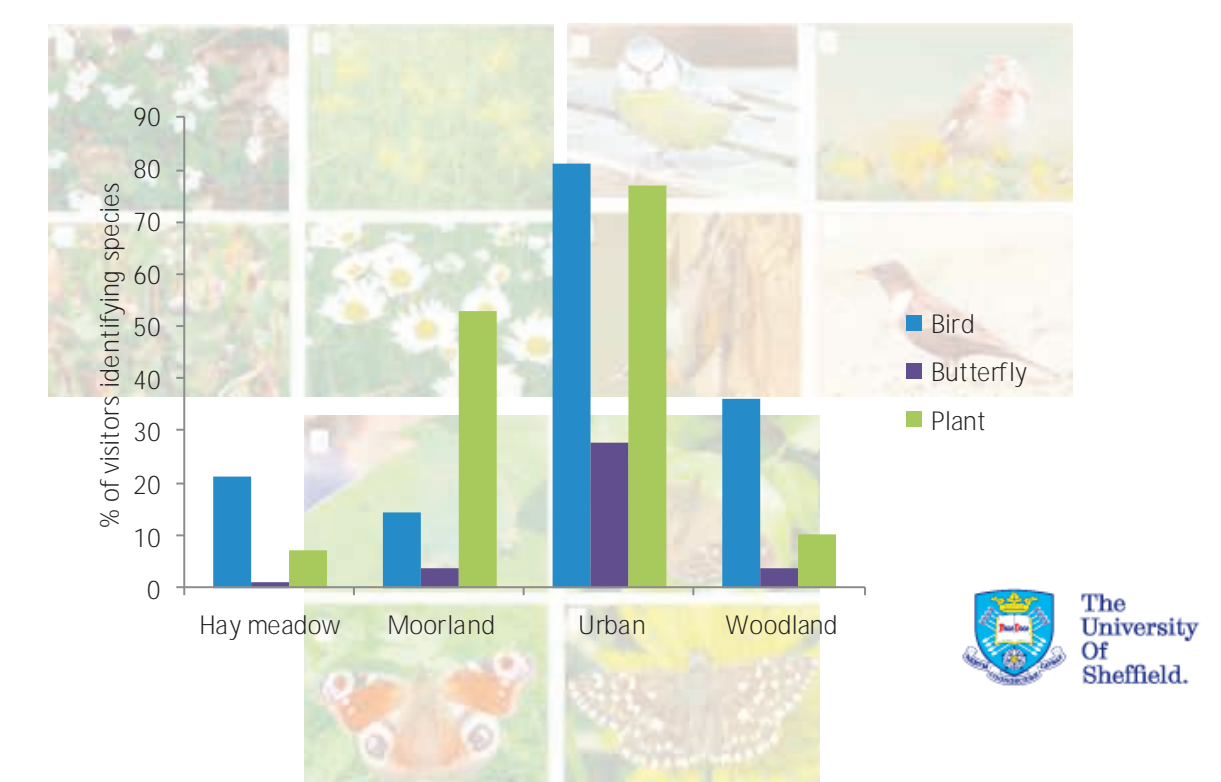
### Social impacts & well-being

#### Attitudes of local community to biodiversity & rural environment

Social surveys conducted:

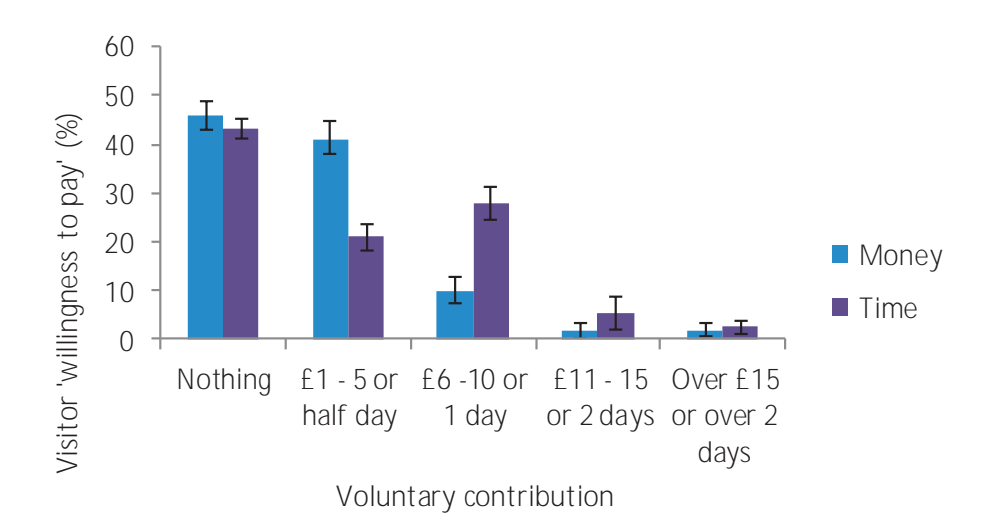
- Before and after NIA works to monitor perceptions of visitors & local residents
- Across 6 key visitor gateways in the Dark Peak NIA
- Using volunteers from across the local community (58 individual volunteers help collect 626 baseline questionnaires)

Awareness of biodiversity: species recognition ...



### Economic values & impacts

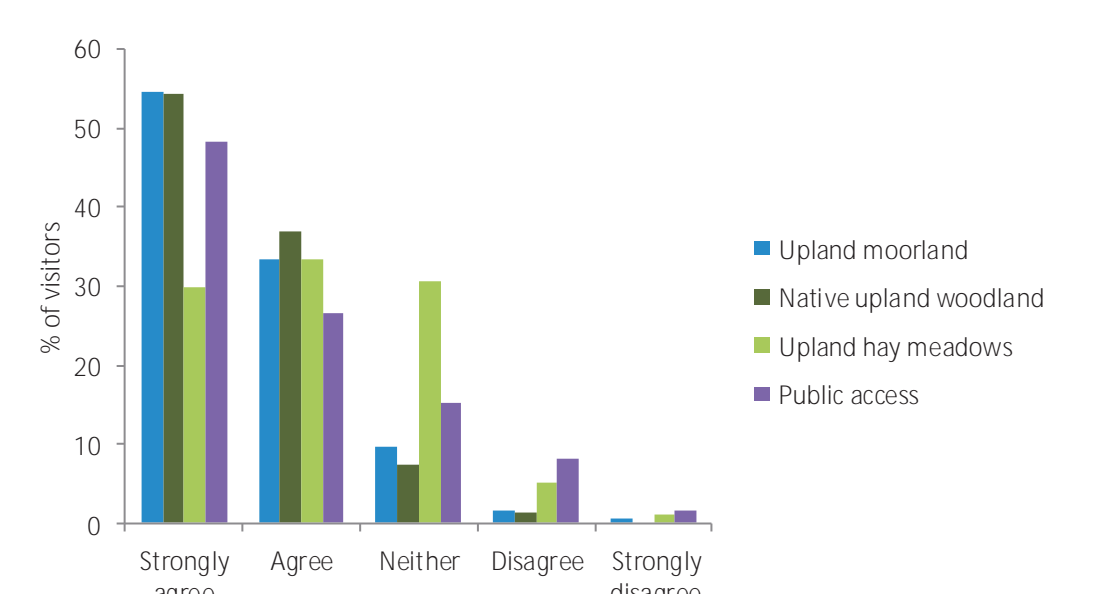
#### Estimated value of visitor expenditure to local economy



### Partnership working

#### Attitudes of local community to NIA

Attitudes towards NIA objectives: It is important to increase the quality & / or amount of ...



Natural England (2012) <http://www.naturalengland.org.uk>

\* Dark Peak Nature Improvement Area Partners

Contact us

[www.moorsforthefuture.org.uk](http://www.moorsforthefuture.org.uk)

T: 01629 816581 or at [moors@peakdistrict.gov.uk](mailto:moors@peakdistrict.gov.uk)

