

# BLANKET BOG

Decision making  
toolkit

## LAND MANAGEMENT GUIDANCE



# Blanket bog: Decision making toolkit

Use the decision aids in this toolkit on the hill to agree the starting condition of the blanket bog and to decide on best management methods to improve it. The decision aids are intended to aid the thought process when making these decisions, rather than a step-by-step guide to what to do. Use them in conjunction with Blanket Bog: Outcomes and Improvements and Blanket Bog: FAQ to take steps to improve the condition of your blanket bog.

The six states of blanket bog are:

**STATE 1** Afforested bog

**STATE 2** Bare peat bog

**STATE 3** Dwarf-shrub dominated blanket bog

**STATE 4** Grass and/or sedge dominated blanket bog

**STATE 5** Modified blanket bog with high dwarf shrub cover but with sphagnum and other mire species

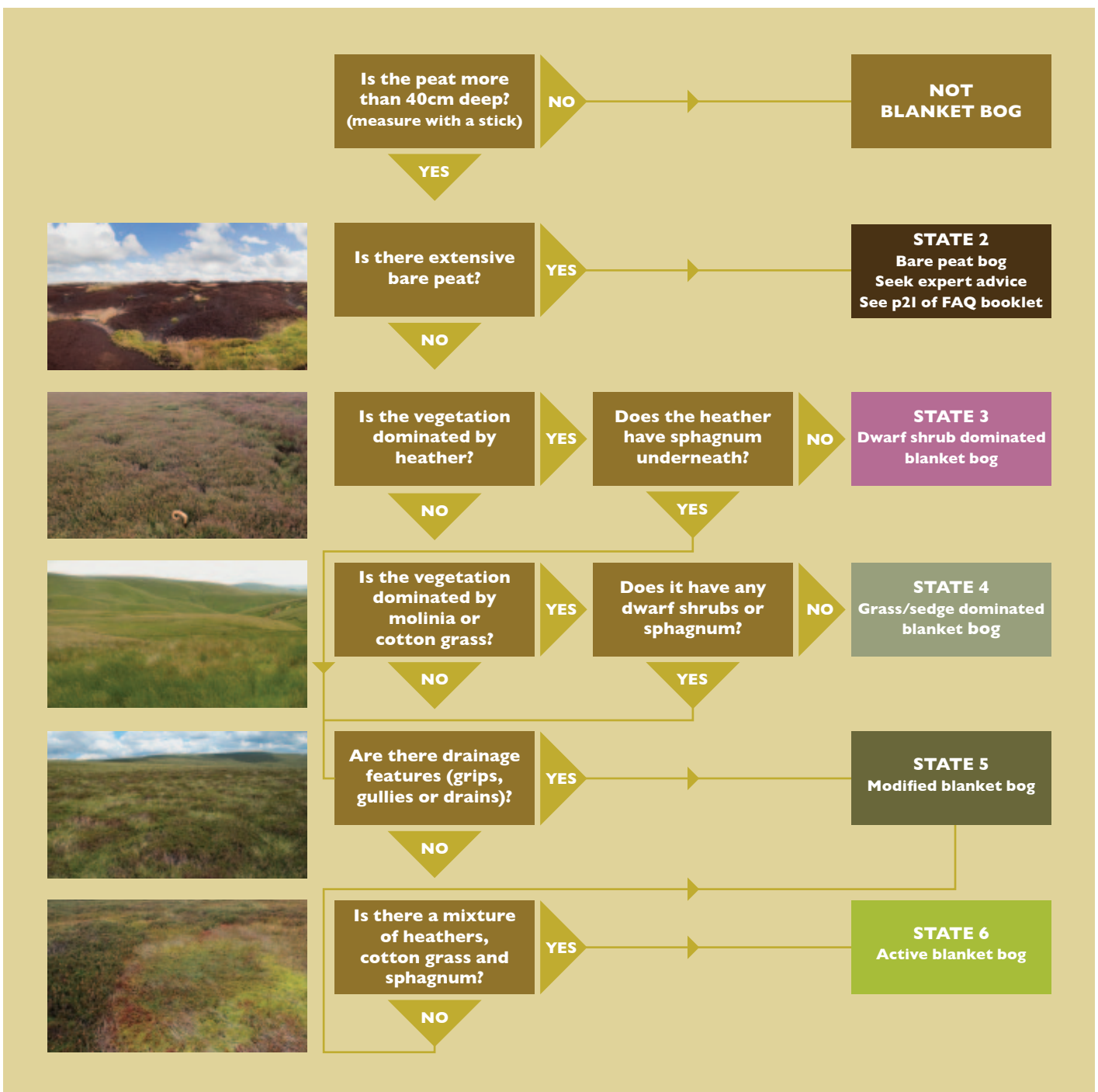
**STATE 6** Active hummock/hollow/ridge blanket bog

State 1 (Afforested bog) is not covered in this guidance.

State 2: Use Outcomes and Improvements to understand the main priorities, which will be to stabilise and revegetate bare peat. For expert advice from peat restoration projects, see p23 of FAQ booklet.

States 3–5: Use this booklet to help decide on a course of action, in conjunction with the Outcomes and Improvements.

State 6: Blanket bog in State 6 requires no action apart from monitoring check it remains in a favourable state.



# State 3: Dwarf shrub dominated blanket bog

Dwarf shrub dominated blanket bog often has drainage features (such as grips, gullies or drains), lack of vegetation structure, areas of bare peat and low water table.



Dwarf shrub cover, such as heather, can reach up to a metre in height



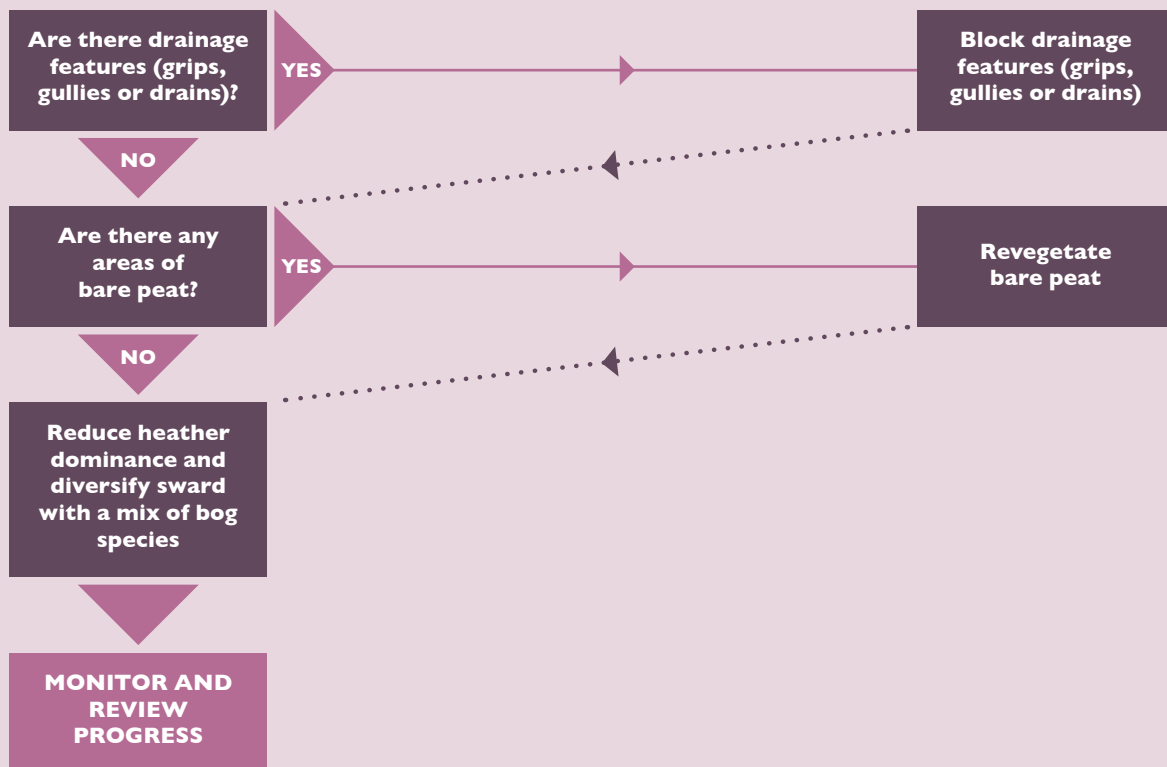
Deep drains quickly carry rainwater away from the blanket bog and lower the water table



State 3 blanket bog may have areas of bare peat



In low water tables vegetation can be represented by drought tolerant species (like this acrocarpus moss) or those with long root systems (heather)



# State 4: Grass/sedge dominated blanket bog

Grass and/or sedge dominated blanket bog has an absence of shrubs and a lack of vegetation structure variation, tussocks due to no grazing, heavily grazed deep peat and purple moor grass domination.



Grass and/or sedge dominated blanket bog with an absence of shrubs and lack of vegetation structure variation



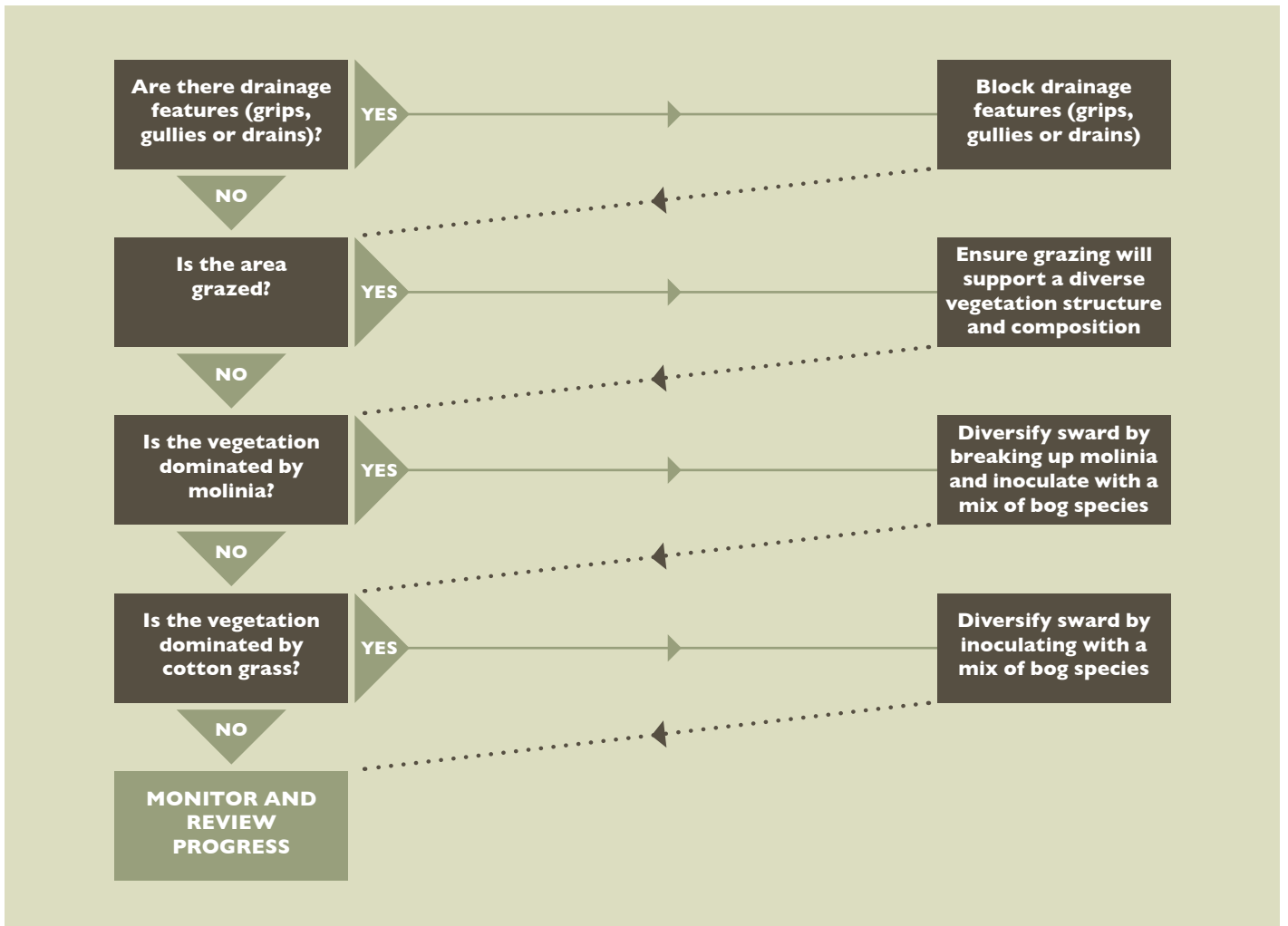
Tussocks due to no grazing



Heavily grazed grassland



Cotton grass dominated blanket bog



# State 5: Modified blanket bog

Good diversity in vegetation structure, heather usually dominant species in this state, heather dominant but with good sphagnum cover, heather and cotton grass dominated bog.



Modified blanket bog with high dwarf shrub cover but with sphagnum and other mire species (active)



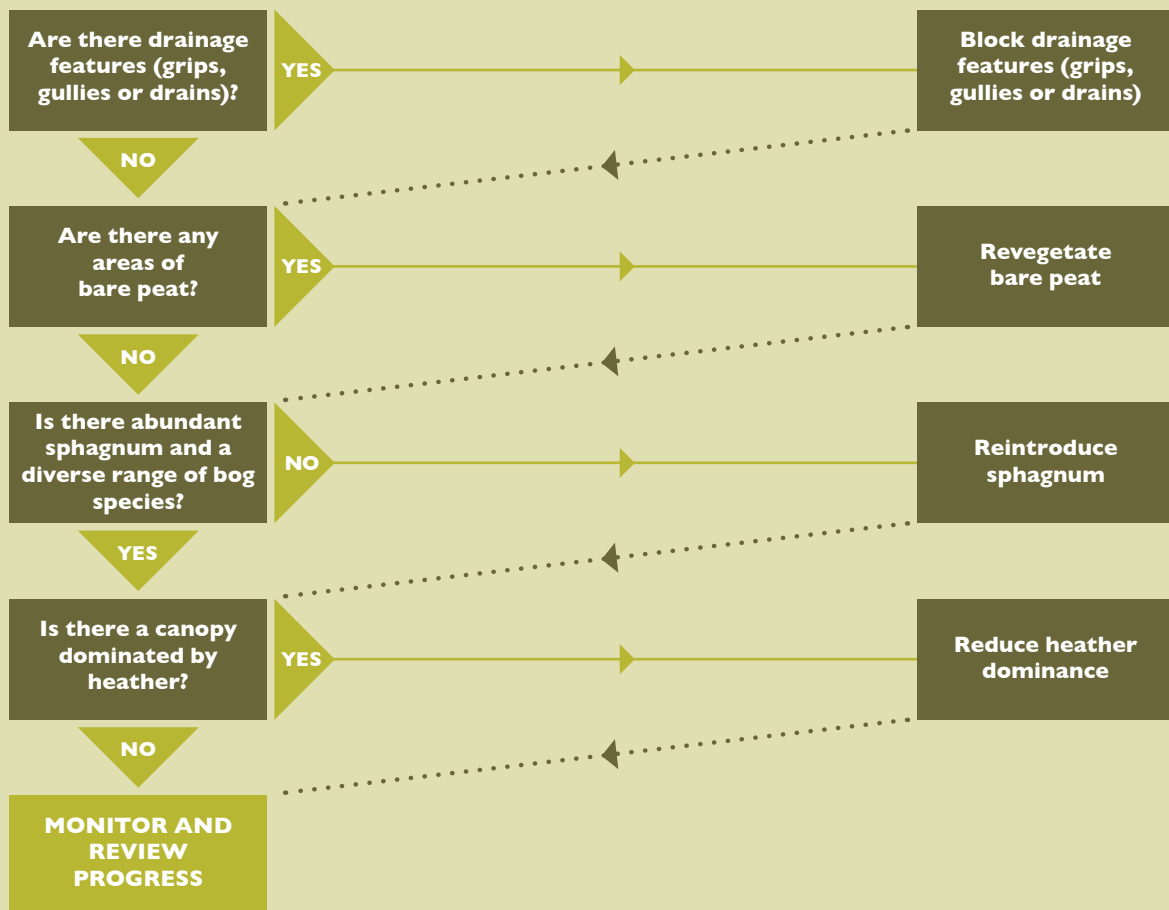
Heather and cotton grass dominated bog, lacking significant sphagnum cover



Heather dominant bog but with good sphagnum cover. All that may be required in this situation is a reduction in the heather dominance



Heather dominated bog with some cotton grass, lacking significant sphagnum cover and other wetland species





**UplandsManagementGroup**

PRODUCED BY MOORS FOR THE FUTURE PARTNERSHIP ON BEHALF OF THE UPLANDS MANAGEMENT GROUP

## MoorLIFE2020

Published by MoorLIFE 2020, a Moors for the Future Partnership project in the EU designated South Pennine Moors Special Area of Conservation. Delivered by the Peak District National Park Authority as the lead and accountable body (the Coordinating Beneficiary). On the ground delivery is being undertaken largely by the Moors for the Future staff team with works also undertaken by staff of the National Trust High Peak and Marsden Moor Estates, the RSPB Dove Stone team and Pennine Prospects (the Associated Beneficiaries).

To give feedback or ask questions please e-mail [moors@peakdistrict.gov.uk](mailto:moors@peakdistrict.gov.uk)

To download the latest version please go to

**[www.moorsforthefuture.org.uk](http://www.moorsforthefuture.org.uk)**

### **Moors for the Future Partnership**

The Moorland Centre, Fieldhead, Edale, Hope Valley S33 7ZA

t: 01629 816577 e: [moors@peakdistrict.gov.uk](mailto:moors@peakdistrict.gov.uk)

Funded by the EU LIFE programme and co-financed by Severn Trent Water, Yorkshire Water and United Utilities. With advice and regulation from Natural England and the Environment Agency, and local advice from landowners.

