



# Visions, Landscape Scale Delivery and The National Trust High Peak Moors



Our vision for the High Peak Moors

The next 50 years and beyond

By Jon Stewart, General Manager  
Peak District



# Scope of talk

Why+ Where

How

What

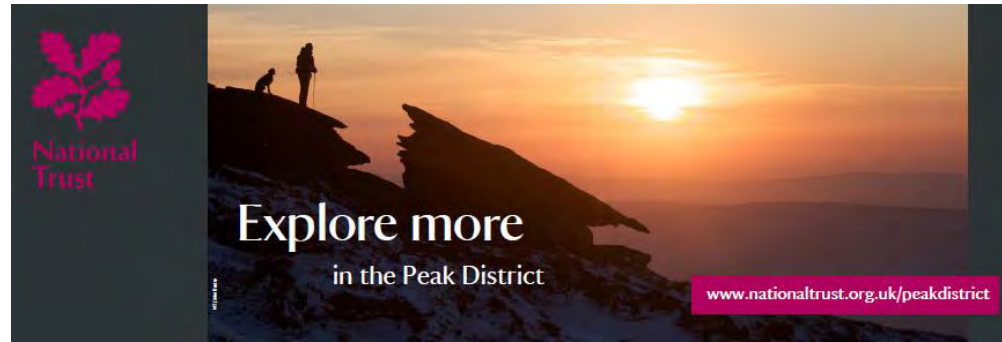
Outcomes

Lessons learnt

The future



# NT Purpose



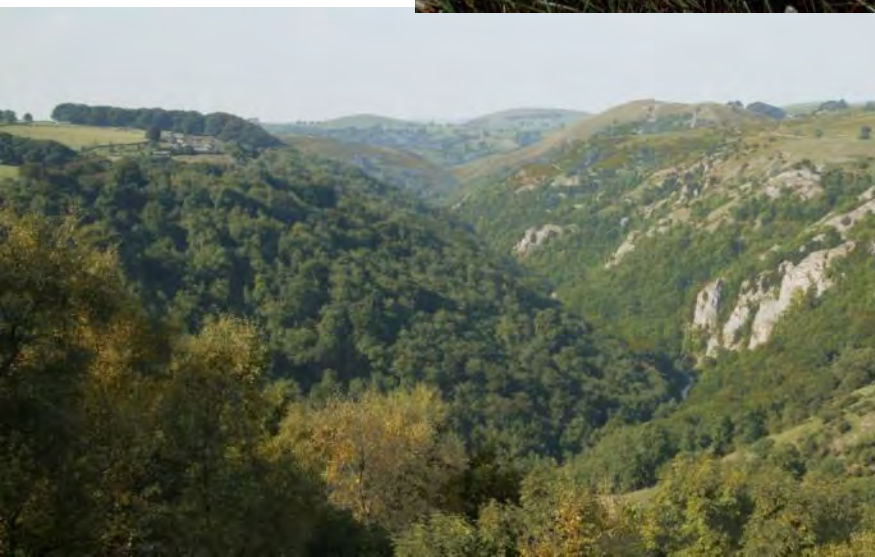
*We are here to promote the preservation of special places for ever and for the benefit of the nation.*



*“The need of quiet, the need of air, the need of exercise, and... the sight of sky and of things growing seem human needs, common to all men.”*  
Octavia Hill, c.1895

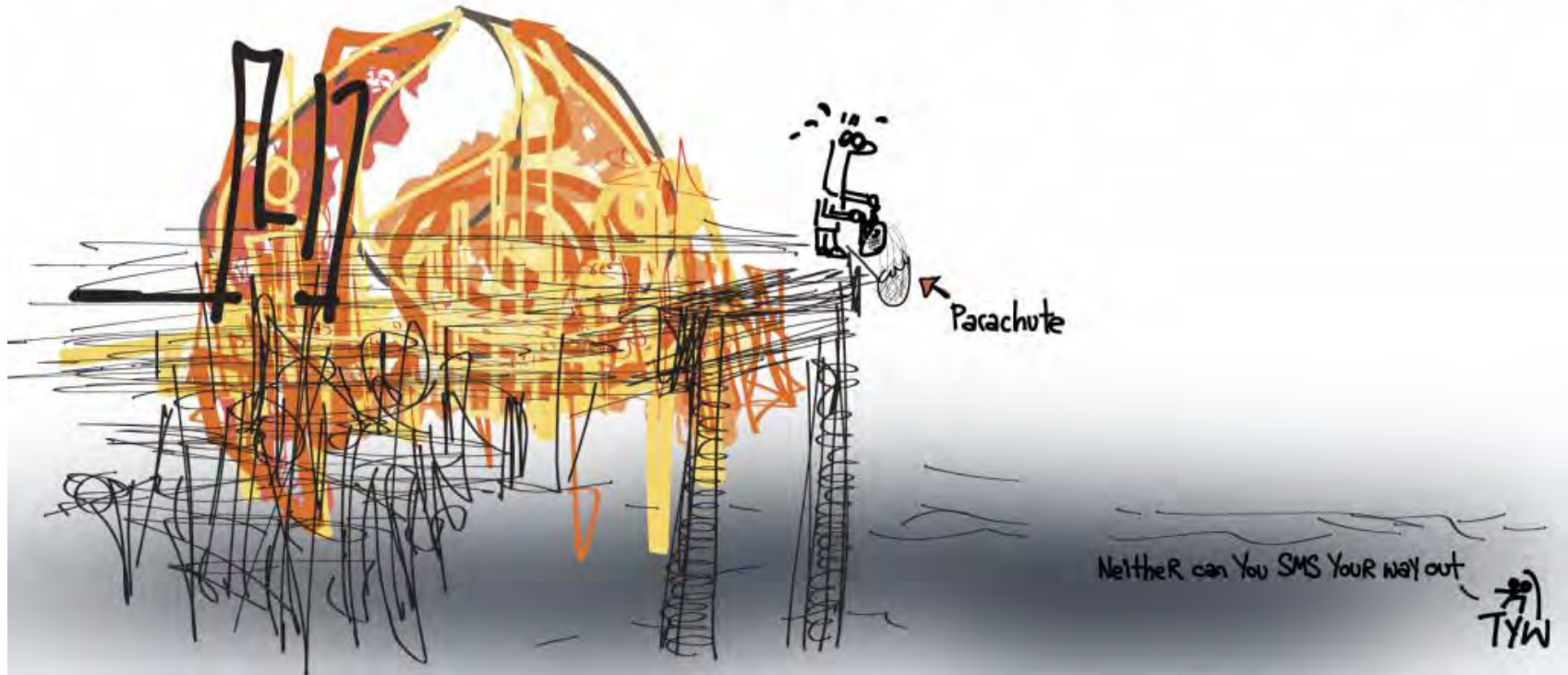
# NT purpose

.....for the purposes of promoting the permanent preservation for the benefit of the nation of lands and ..... as regards lands for the preservation (so far as practicable) of their **natural aspect features and animal and plant life**





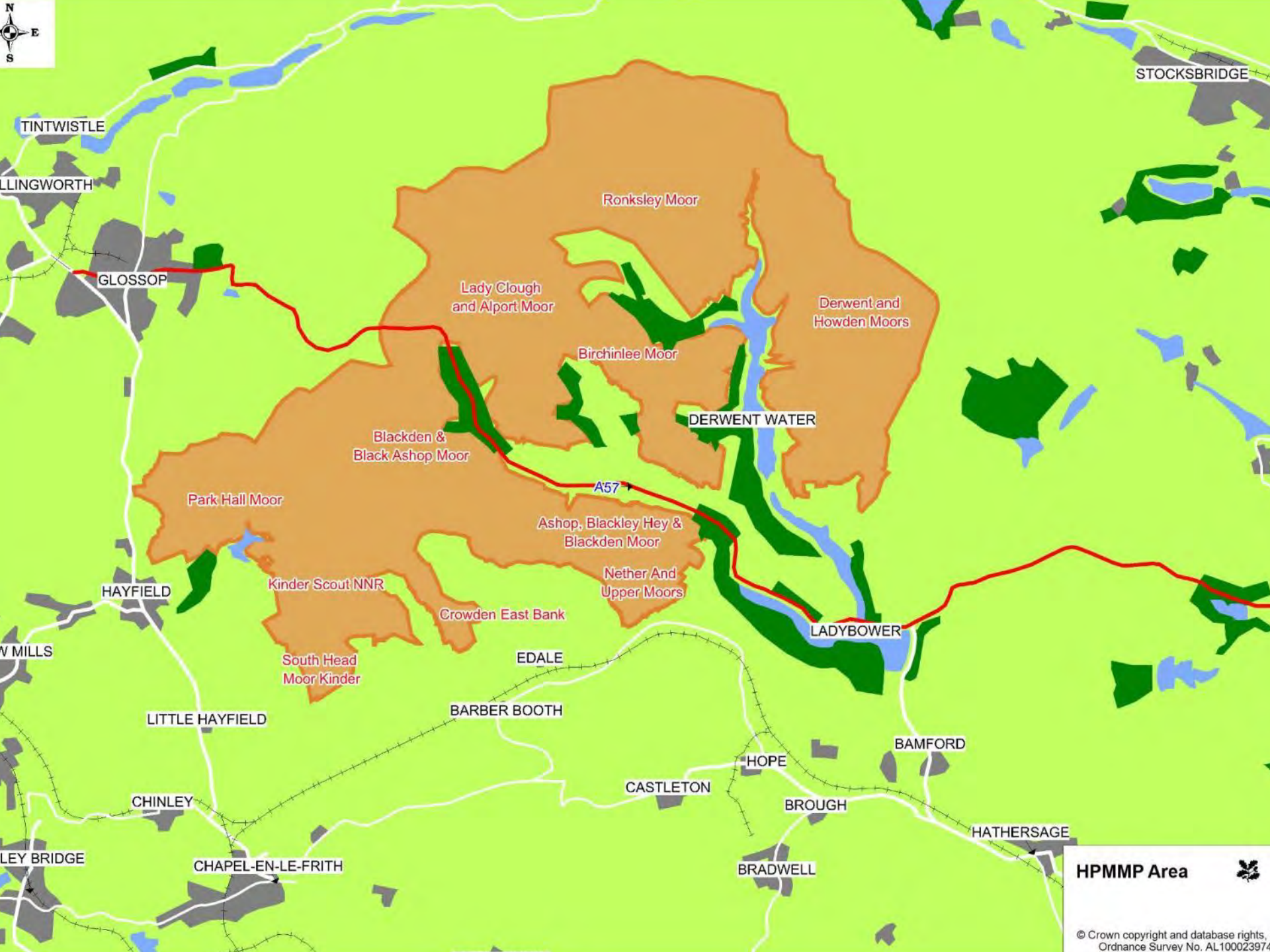
# You Can't Iterate on a BURNING Platform



# Our Land: for ever, for everyone

- care for our carbon
- enhance wildlife
- protect water
- reconnect people with land
- use a land capability approach
- find new income for sustainable land management





**HPMMMP Area** 

© Crown copyright and database rights, Ordnance Survey No. AL10002397



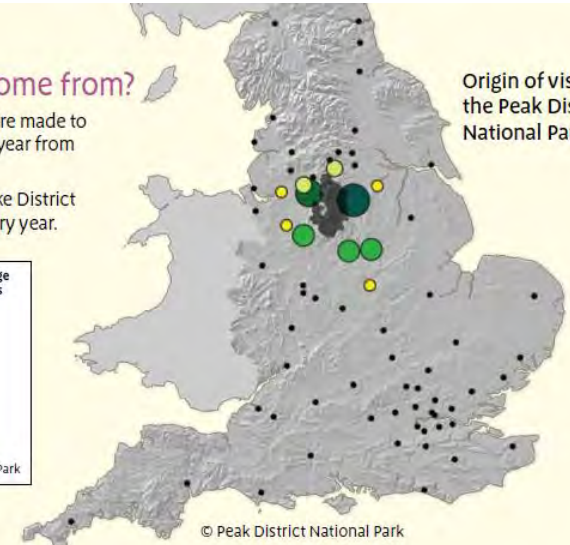
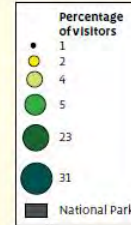


# Context



## Where do visitors come from?

- Nearly 70 million day visits are made to upland National Parks each year from across the country.
- The Peak District and the Lake District receive the most visitors every year.



Origin of visitors to the Peak District National Park (2004-05)





# Access to open space





# Highest conservation value



At the National UK level  
SSSI/ National Park

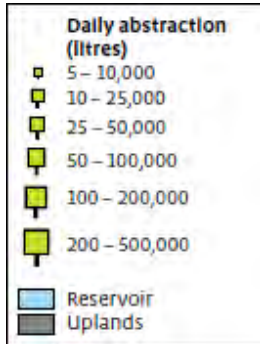


At the European level:–  
Special Protection Area  
Special Area of Conservation  
( Natura 2000 site)

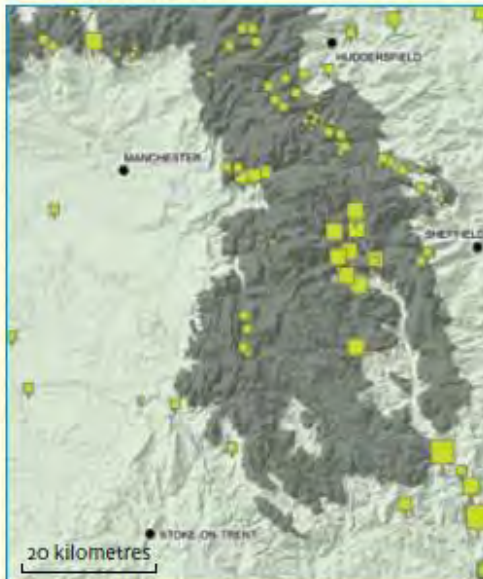




# Ecosystem services



Water abstraction volume in the Peak District





THE NATIONAL TRUST

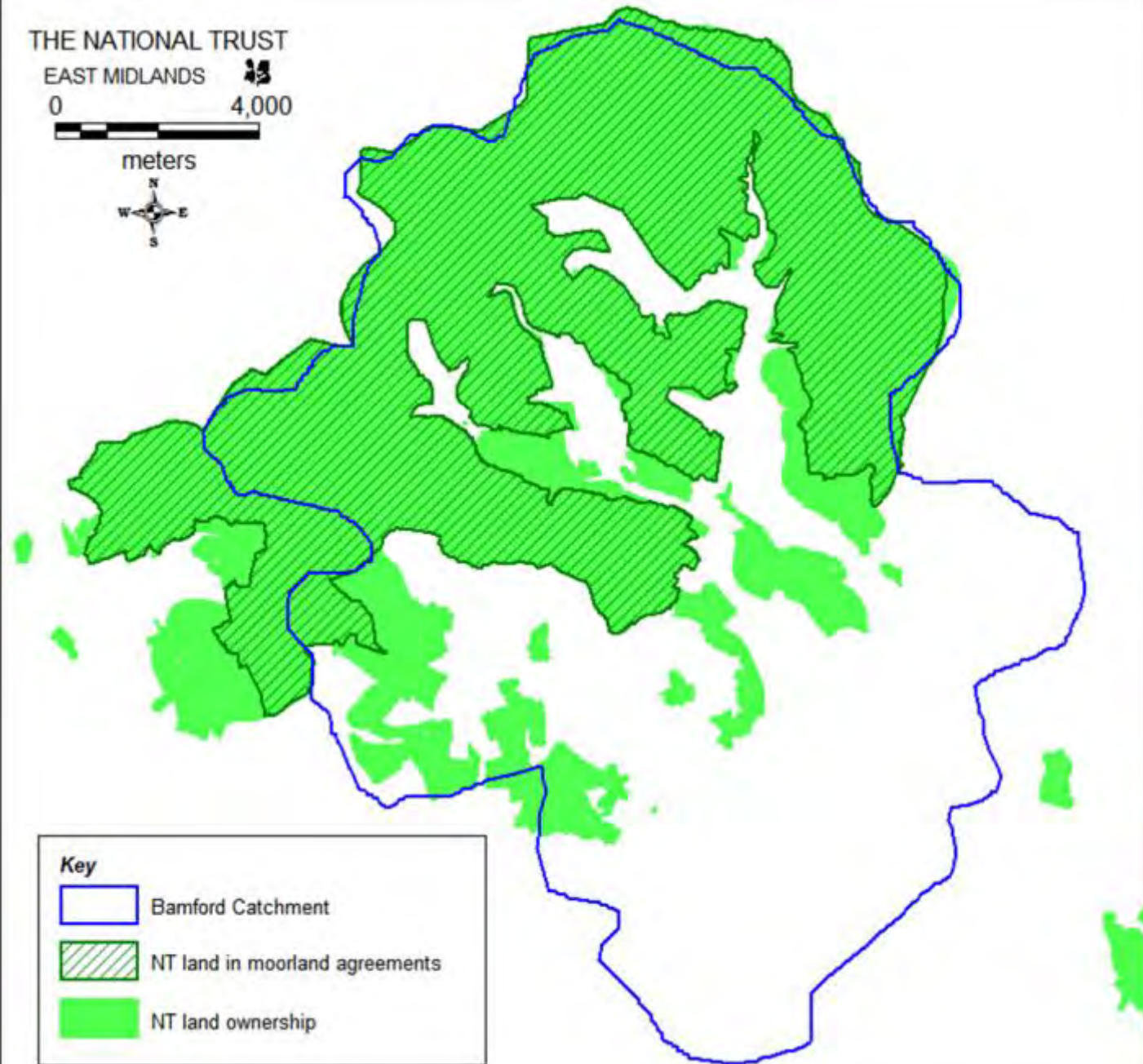
EAST MIDLANDS



0 4,000



meters





Environmentally  
Sensitive Areas

# North Peak ESA



**DEFRA**  
Department for  
Environment,  
Food & Rural Affairs

**GUIDELINES**  
for **FARMERS**



Plan

## Sponsors



Delivery

## Client



## Project Manager



### Client Brief

1. Produce a Vision and Plan
2. New tenancies over 10,000ha
3. New HLS over 10,000ha





# Peak District Guiding Principles for Land Management



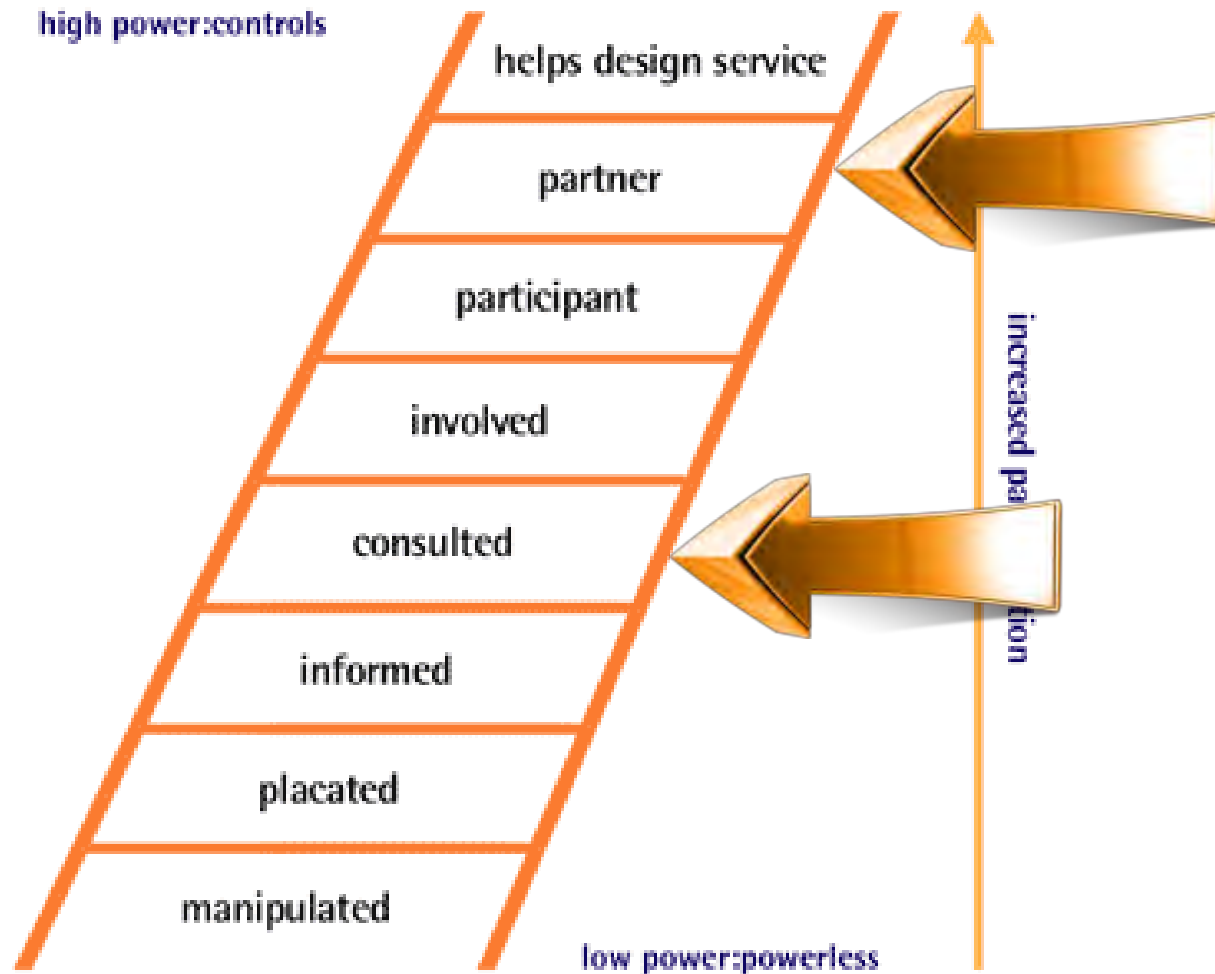
Water abstraction volume in the Peak District



<b>December 2011</b>	Initial meeting with all NT moorland tenants
<b>January 2012 and ongoing</b>	Individual meetings with NT moorland tenants
<b>February &amp; March 2012</b>	<p>Four public <i>Your Moors, Your Ideas</i> workshops, which 250 people attended. They were asked what they would like to see more of, less of, changed and kept the same on the High Peak Moors, in respect of 4 key themes:</p> <ul style="list-style-type: none"> <li>• Access &amp; Recreation</li> <li>• Historic &amp; Working Landscapes</li> <li>• Wildlife &amp; Conservation</li> <li>• Carbon, Water &amp; Climate Change</li> </ul> <p>People were also able to comment on these themes via the website. Over 950 comments were received. A summary of responses can be viewed at <a href="http://www.high-peak-moors.co.uk/public-consultation/">www.high-peak-moors.co.uk/public-consultation/</a></p>
<b>April 2012</b>	<p>A workshop for Moors for the Future partners. See <a href="http://www.moorsforthefuture.org.uk/">www.moorsforthefuture.org.uk/</a> for more about MFF and see <a href="http://www.high-peak-moors.co.uk/public-consultation/">www.high-peak-moors.co.uk/public-consultation/</a> for a report of this workshop</p>
<b>June &amp; July 2012</b>	Input from the Peak District National Park Authority officers and rangers
<b>Throughout</b>	Advice from the NT's own regional and national advisers on agriculture, nature conservation, access and recreation and archaeology
<b>June 2012</b>	Views gathered from a variety of experts. See Section 13
<b>October 2012</b>	Draft plan put out for public consultation. Over 430 responses received. Responses analysed and discussed 2013.
<b>September 2013</b>	Final Vision and Plan launched



# The ladder of participation



High Peak Moors - Home Page - Microsoft Internet Explorer provided by The National Trust

http://www.high-peak-moors.co.uk/

Convert Select

Peak NT BBC Weather Brincliffe BBC Weather S11 Google High Peak Moors Home Homepage - National Trust Login MyPlace Login Outlook Quick Start Guide


Project management guid... Wordle - Create http://fellrunningguide.fil... High Peak Moors - Ho...

Page Safety Tools

What's happening? Why do it? Public consultation Map Contact us

# National Trust

## Welcome to the High Peak Moors



Done

Internet | Protected Mode: On

100%

100%

13:25  
10/10/2013



Clearer   
*Thinking*

Facilitation & Environmental Training



High Peak Moors  
Agricultural tenancies

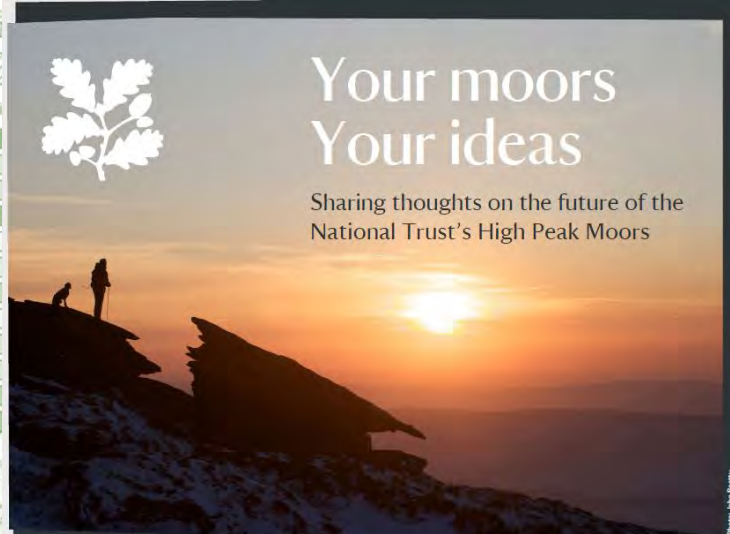
THE NATIONAL TRUST  
EAST MIDLANDS

# Consultation process

Scale 1:5000  
Produced by: Sue Harding  
Date 04/12/2012

BASED UPON THE ORDINANCE SURVEY  
MAPPING WITH THE PERMISSION OF  
THE CONTROLLER OF HIS/HER MAJESTY'S  
COPYRIGHT. ALL RIGHTS RESERVED.

LC



## Your moors Your ideas

Sharing thoughts on the future of the  
National Trust's High Peak Moors

Photo: John Barry

National  
Trust

A series of workshops to gather your ideas for a Master Plan which will guide the management of the National Trust's High Peak Moors for the next 25 years

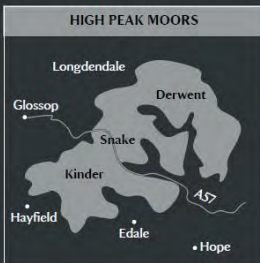
**Tue 28 February, 6.45pm - 9pm.** Glossop Cricket Club  
North Road, Glossop, Derbyshire, SK13 7AS

**Wed 21 March, 6.45pm - 9pm.** Bamford Institute  
Main Road, Bamford, Hope Valley, Derbyshire, S33 0DY

**Thur 22 March, 6.45pm - 9pm.**  
Totley All Saints' Church Hall  
Off Totley Hall Lane, Sheffield, South Yorkshire, S17 4AA

The meetings are free to attend but please book your place in advance by contacting the National Trust Peak District Office  
T: 01433 670368 E: [peakdistrict@nationaltrust.org.uk](mailto:peakdistrict@nationaltrust.org.uk)

For more details visit [www.high-peak-moors.co.uk](http://www.high-peak-moors.co.uk)



National Trust

wildlife

access and recreation

historic and working landscapes

carbon, water and climate change

High Peak Moors  
Vision and Plan  
2013-2038

Consultation Draft

Deadline for comments  
30 November 2012



# Consultation process



Public workshops Spring 2012: 950+ comments

Draft Plan Autumn 2012: 430 comments- 84% supportive

- Challenge
- United Front
- Back to core purpose “Golden thread”
- Backed up by Land capability
- 84% supportive of Vision







National  
Trust



## The High Peak Moors

The next 50 years and beyond





National  
Trust



## Our vision for the High Peak Moors

The next 50 years and beyond

National  
Trust



## High Peak Moors Vision and Plan

The next 50 years and beyond

National  
Trust



# Vision



- To take the best from our shared inheritance, understanding and skills to create an inspirational 21st-century moorland landscape of restored and healthy natural habitats.
- A model for future upland moorland and moorland fringe management that delivers excellent landscape scale conservation and restoration; is rich in wildlife and cultural heritage; and provides excellent access, sustainable livelihoods and wider public benefits.
- Management based on constructive, forward looking partnerships with tenants, communities, organisations and users.



People  
being  
inspired

Our vision for the  
High Peak Moors



National  
Trust



Challenge  
yourself  
in the Peak District

[www.nationaltrust.org.uk/peakdistrict](http://www.nationaltrust.org.uk/peakdistrict)

National  
Trust

For ever, for everyone



# People looking after the land

Our vision for the High Peak Moors



National Trust

Working together to look after this special place

**High Nature Value Farming in Europe**  
35 European countries – experiences and perspectives  
Karin Oppermann, Guy Beaudry, Gwyn Jones (Eds.)

**NOW AVAILABLE**





# Our vision for the High Peak Moors



**National  
Trust**

---

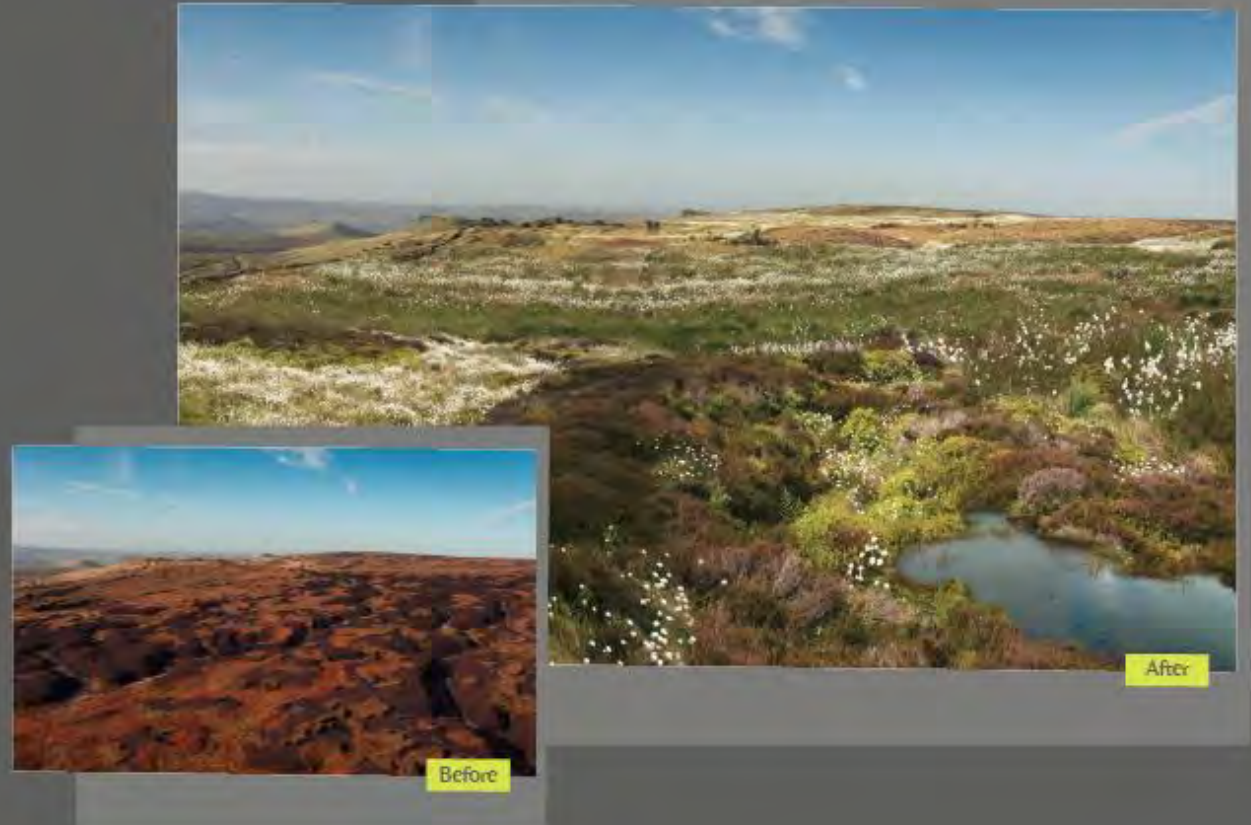
People looking after the land



# Secure and healthy peat bogs



# Our vision for the High Peak Moors





# Vibrant wildlife, including birds of prey



Our vision for the  
High Peak Moors



**National  
Trust**

A thriving, inspiring landscape  
for people and wildlife

The image is a vertical banner for the National Trust. At the top, the text "Our vision for the High Peak Moors" is written in white on a dark grey background. Below this is a small yellow leaf icon. The main part of the banner is a photograph of a scree owl perched in a field of tall grass and wildflowers. At the bottom, the National Trust logo is on the left, and a yellow horizontal line is above the text "A thriving, inspiring landscape for people and wildlife" on the right.





More trees and shrubs in the valleys and cloughs









# Public support for public benefit

**GENERAL DETAILS**

**FORESTRY COMMISSION ENGLAND**


**ewgs 1**

**English Woodland Grant Scheme**

Version 6/February 2012  
For updates and the latest version go to: [www.forestry.gov.uk/ewgs](http://www.forestry.gov.uk/ewgs)

**GENERAL GUIDE TO EWGS**

- The English Woodland Grant Scheme
- How to apply
- How we deal with your application
- Application maps
- How to complete form EWGS 1
- How to claim grant



*EWGS – Grants for the stewardship and creation of woodlands*

**WOODLAND TRAINING**

**WOODLAND PLANTING**

**WOODLAND MANAGEMENT**


**WOODLAND CREATION**

**defra**

**Environment Agency**

**Water for life and livelihoods**

**River Basin Management Plan  
Humber River Basin District**




**Environmental Stewardship  
East Midlands Region**

**Environmental Stewardship Agreement**

Kinder Scout, Dark Peak Estate Office, Edale End, Edale Road, Hope Valley, Derbyshire, S33 8RF.  
Agreement Reference: AG00320988

**NATURAL ENGLAND**

# Strong Partnership in place since 2003 which has so far raised £32M






High Peak Estate  
 Edale End  
 Hope  
 Derbyshire S33 6RF

**National Trust**

## HPMV Patrol Monitoring Areas

### Legend

-  Monitoring Areas
-  Moorland Boundary
-  Exclusion Fence







Moors for the Future



Partnership

Kinder Scout 2014







# Lessons learnt

- Vision as a touchstone brilliant
- Remember why and who you are doing it for
- Golden thread- organisational alignment key
- Other's support critical to achievement
- Could we have widened scope?
- Have it earlier to better inform delivery mechanisms
- Be flexible and adaptable
- How far in consulting/engaging do you want to go?



# Lessons learnt 2

- Staff/team:
  - Skills, capabilities, capacity
  - Keeping people on the same page
  - Delivery structure and capacity
- Communications;
  - Show not tell- on site; before and after images
  - Website
  - Plain English eg Summary doc
  - Organisational alignment
  - Clarity of message to tenants
  - Repeat the why and in different ways



National  
Trust

# Playing our part

What does the nation need from the  
National Trust in the 21st century?



# In the 21st century

“The question now is: what does the nation need from us in 21st century?”

Helen Ghosh,

“This is even better than Google Maps!”

- newly recruited Trail TRACKer





# Looking after what we have got





# Restoring a healthy beautiful natural environment



Our vision for the High Peak Moors

The next 50 years and beyond

National  
Trust





# Creating experiences of our places that move, teach and inspire

  
National Trust

The Road to Longshaw

24th and 25th May 2014



*"A perfect day" at Longshaw August 1916*

"Follow the story of a wounded soldier from the Western Front back to England and recuperation at Longshaw Lodge, before returning to his regiment..."







# Helping look after the places where people live



Nesta...



National  
Trust

Endowing public parks in the 21<sup>st</sup> century



# Growing support for what we do





# Our ambition for all land



# Land and landscapes that are:



## Healthy

Soils, water, carbon, ecological processes, adapting to change

## Rich in wildlife

Habitats that are *'better, bigger, more joined up'*

## Productive

Food, wood, water, energy, enterprises

## Enjoyable

Accessible, welcoming, paths, space, interpreted

## Beautiful

Cherished, distinctive, 'unspoilt', natural & cultural elements

## Culturally rich

Historic sites, built features, traditions, stories

<http://www.nationaltrust.org.uk/dark-peak/our-work/high-peak-moors-vision-and-plan/>



## The High Peak Moors

---

The next 50 years and beyond

National  
Trust