



Environment  
Agency

# Peatbogs & WFD



Alison Baker - Partnerships Co-ordinator  
Environment Programme Team

# Shared Journey



# EA NFM projects

- ➔ Trawden
- ➔ Western Pennine Slopes NFM
- ➔ Clough Woodland Project
- ➔ Wessenden
- ➔ Sheffield CC NFM Initiative
- ➔ Working with Natural Processes



# Water Framework Directive



# RBMP – Key Aspects

- ➡ Habitats Directive
- ➡ Drinking Water Protected Areas
- ➡ Waterbody Status

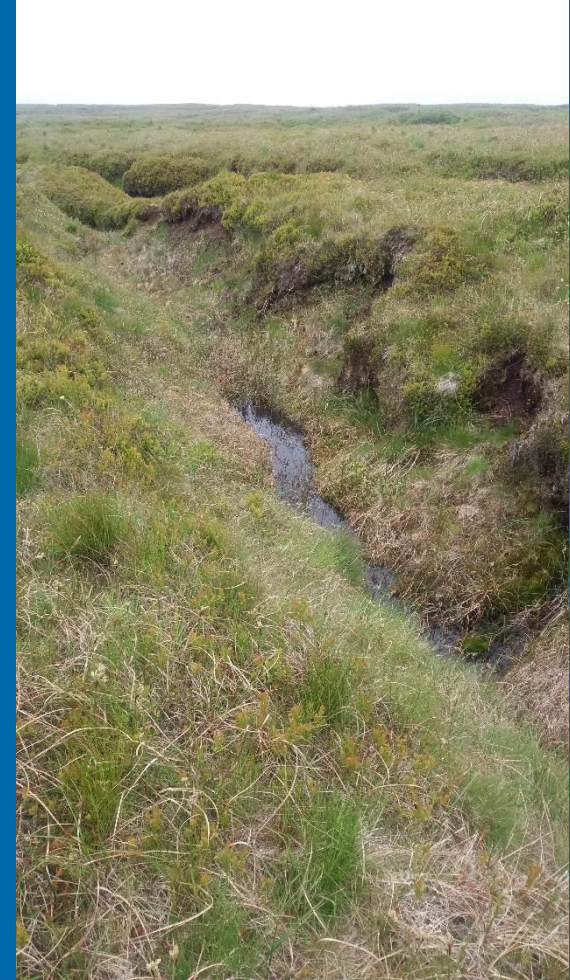


# Habitats Directive: Natura 2000



- ➔ South Pennine Moors SAC
- ➔ South Pennines Moors SPA
- ➔ Site Improvement Plans:

*“Restore site hydrology by implementing restoration plans”*



# Drinking Water facts

- ➡ 70% of UK drinking water originates from (often peat dominated) uplands
- ➡ ~ 450 billion litres of water is extracted per year from 55 reservoirs in the Peak District National Park
- ➡ This provides 4 million people with fresh drinking water every year
- ➡ Water abstraction also provides water sources for agriculture, other businesses and fire fighting





# Financial impact

- ➔ In Bamford Catchment alone:
- ➔ Severn Trent Water treatment costs: £11million capital and £925K annual £30,000 per month to remove the sludge cake
- ➔ Between April 2010 and March 2011 11,500 tonnes of sediment were removed from raw water to meet drinking water standards

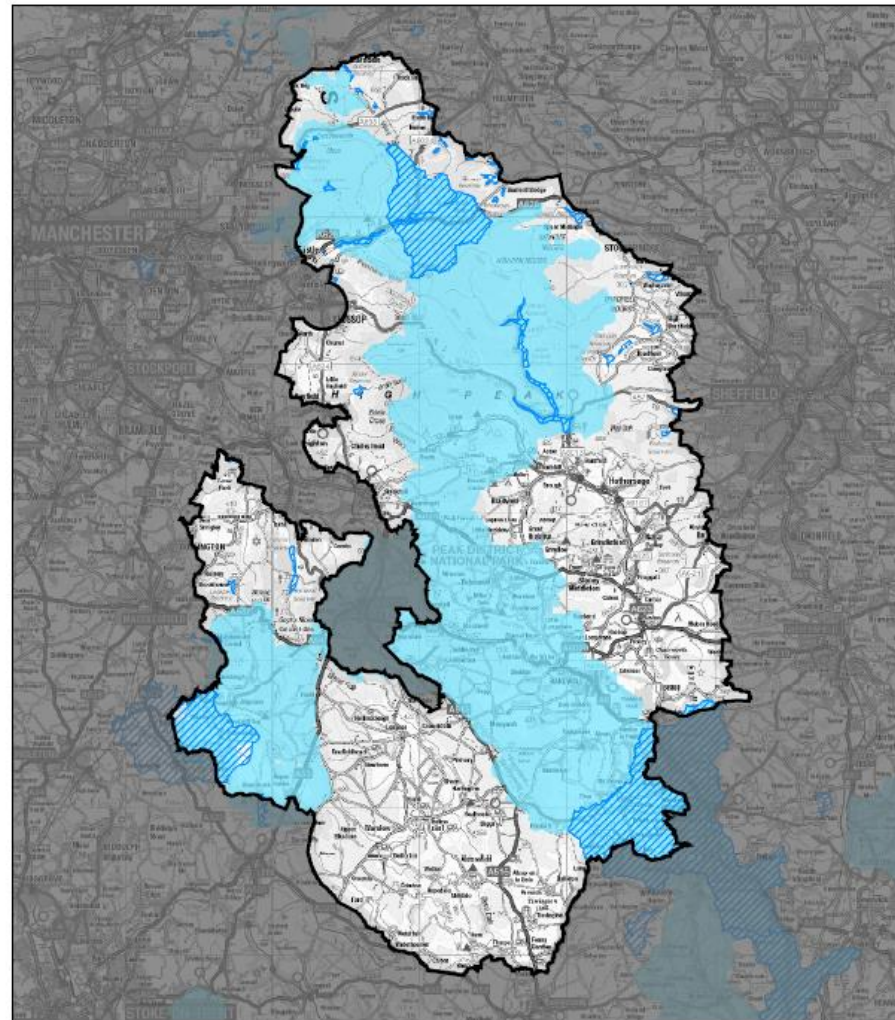


# Significance to EA

- ➔ WFD requires that drinking water sources are protected
- ➔ Drinking Water Protected Areas (DrWPAs)
- ➔ Water Safeguard Zones (WSgZs)
- ➔ Safeguard Zone Action Plans

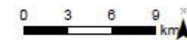
# Water Safeguard Zones

## Peak District National Park Drinking Water Protected Areas & Safeguard Zones



### Legend

- Peak District National Park
- Peak District National Park Mask
- DrW SurfaceWater Protected Areas
- DrW SurfaceWater Safeguard Zones



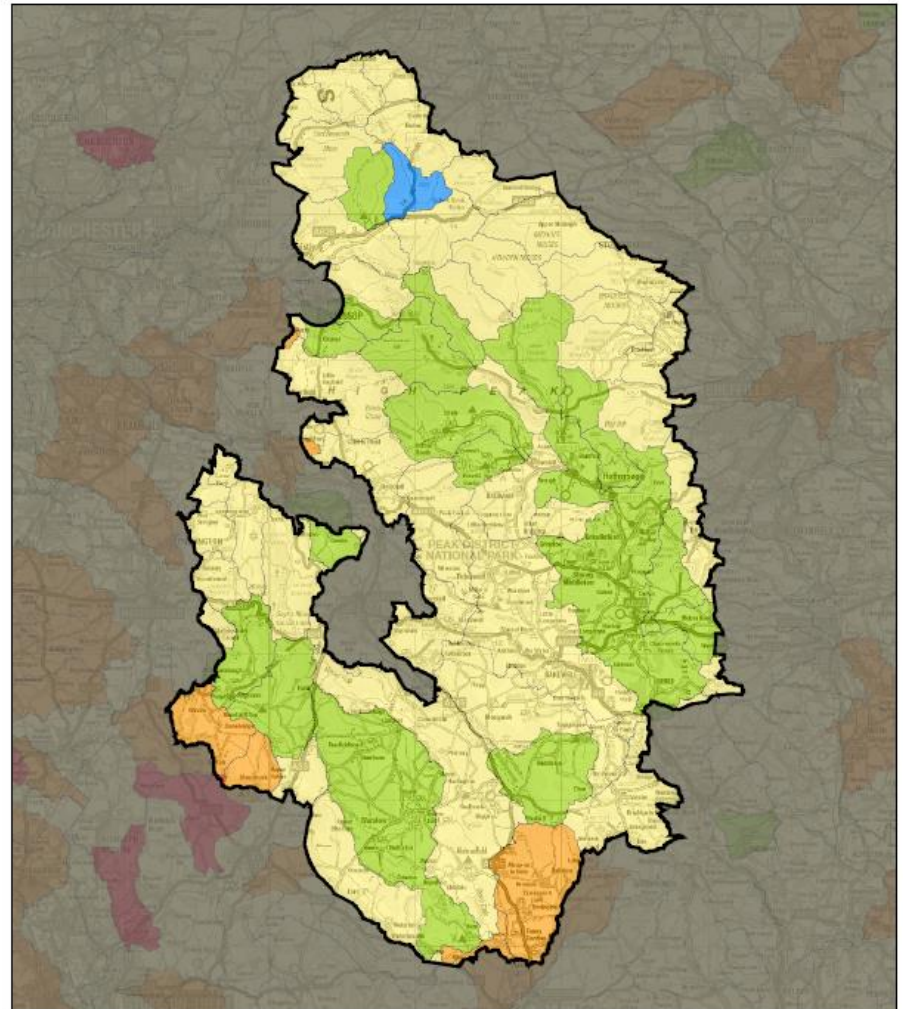
© Crown copyright and database rights 2013  
Ordnance Survey 100024198  
© Environment Agency copyright and/or  
database rights 2013. All rights reserved.

# 'At Risk' for Colour

- ➔ Howden, Derwent, Ladybower
- ➔ Arnfield (Longendale )
- ➔ Buckton Castle (Swineshaw & Dovestone)
- ➔ Loxley
- ➔ Longwood
- ➔ Wickenhall (Blackstone Edge & Piethorne Valley)

*Multiple organisations to work together with the aim to reduce the peat erosion which will in turn reduce the levels of colour, phosphate, organic carbon and copper. This will include the MoorLife 2020 bid. The SgZ (established 2012) is related to the water quality aspects of this project. Severn Trent NEP funded scheme linked to this work (6STD04066)*

# Waterbody Status

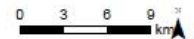


**Legend**

**Administrative Boundary**  
Peak District National Park  
Peak District National Park Mask

**WFDC2 RIVER CATCHMENTS**  
**OVERALL ECOLOGICAL CLASS**

- High
- Good
- Moderate
- Poor
- Bad



© Crown copyright and database rights 2013  
Ordnance Survey 100024198  
© Environment Agency copyright and/or  
database rights 2013. All rights reserved.

# Upper Derwent Water Quality Monitoring Project

➔ DOC

➔ POC

➔ Cu

➔ Zn

➔ pH



# KPIs

- ➡ KPI1311 – Rivers, Lakes and Coastal Waters are healthier
- ➡ KPI 660 – We work with others to protect drinking waters
- ➡ KPI 766 – Restoring SSSI's to favourable condition
- ➡ KPI 768 – Area of new 'England Biodiversity Strategy' priority habitat creation
- ➡ KPI 770 – We seek funding contributions through working in partnership