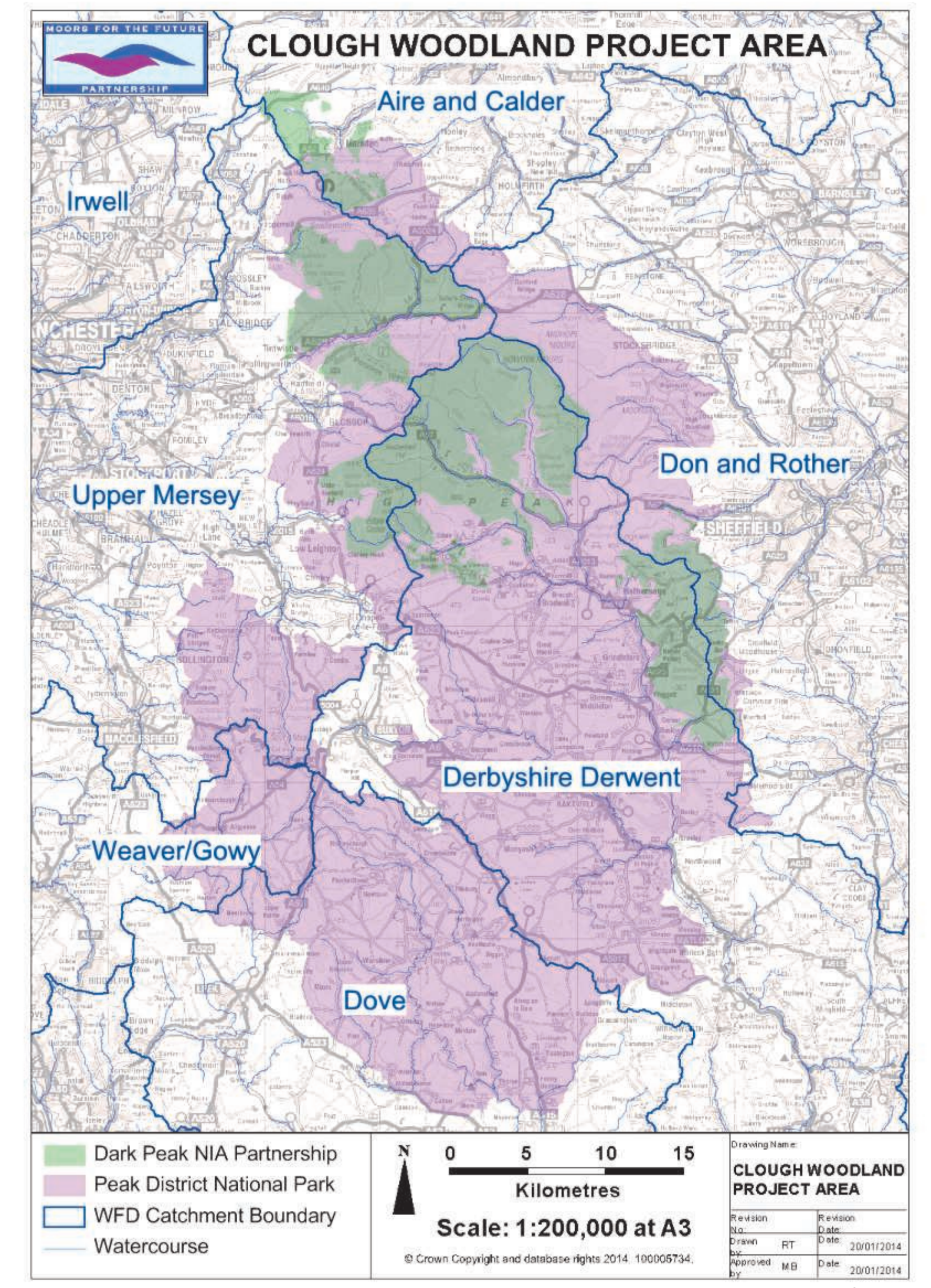


Clough Woodland Project

The Clough Woodland project aims to restore native broadleaf woodland along the fast flowing upland streams and surrounding steep sided valleys or “cloughs”. Moors for the Future Partnership are working with landowners and managers to raise awareness of the benefits of creating clough woodland and facilitating grant applications to fund capital works.

Clough woodland restoration may provide the following benefits:

- Increased habitat and species diversity
- Enhanced visitor experience and well being
- Landscape enhancement
- Reduced surface water runoff and peak flows associated with storm events
- Improved water quality: streams, rivers & reservoirs
- Improved slope stability & reduced soil erosion
- Bracken control
- Shelter for livestock
- Carbon storage
- Increased resilience: climate change & plant health
- Evidence base for the future



Map 1 – Clough Woodland Project Area

Links to Policy & Plans

- Water Framework - RBMP
- Floods - CFMP, FCERMS
- Habitats & Birds - Peak District BAP
- Landscape Strategy & Plan
- Moors for the Future Operational Plan



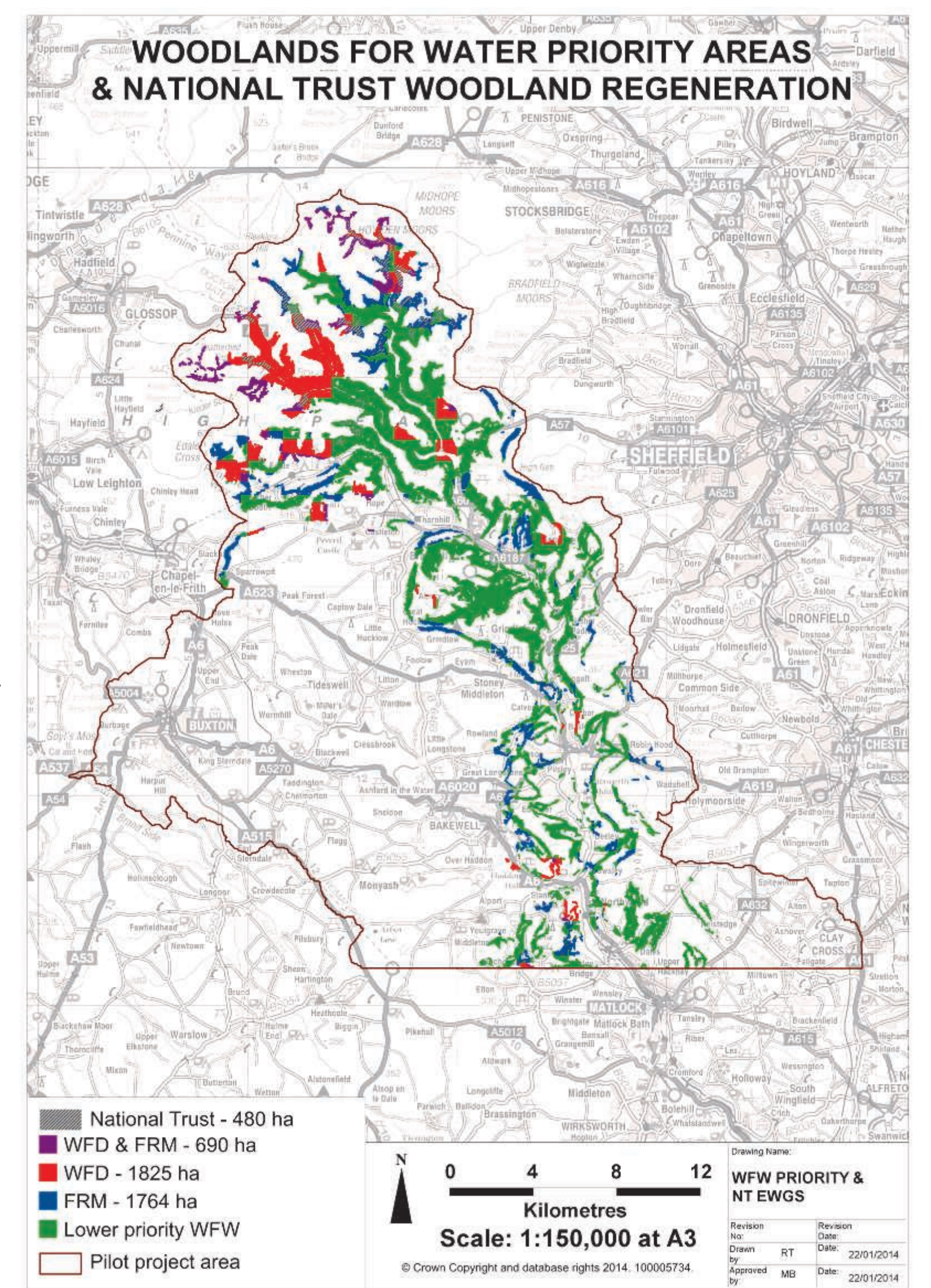
Trees & Shrubs

A mixture of dry and wet woodland including some of the following species:

- Oak
- Birch
- Rowan
- Hazel
- Holly
- Hawthorn
- Alder
- Willow
- Aspen
- Bird Cherry
- Small leaved lime
- Crab Apple

Woodland Characteristics

- Significant amounts of open space, with varied tree cover will provide a wide range of benefits.
- Dense thickets of trees and shrubs will be appropriate to some areas and widely spaced trees and shrubs to others.
- Closed canopy woodland interspersed with open ground with transitions between upland heath, flush, grassland, bracken and mosses.



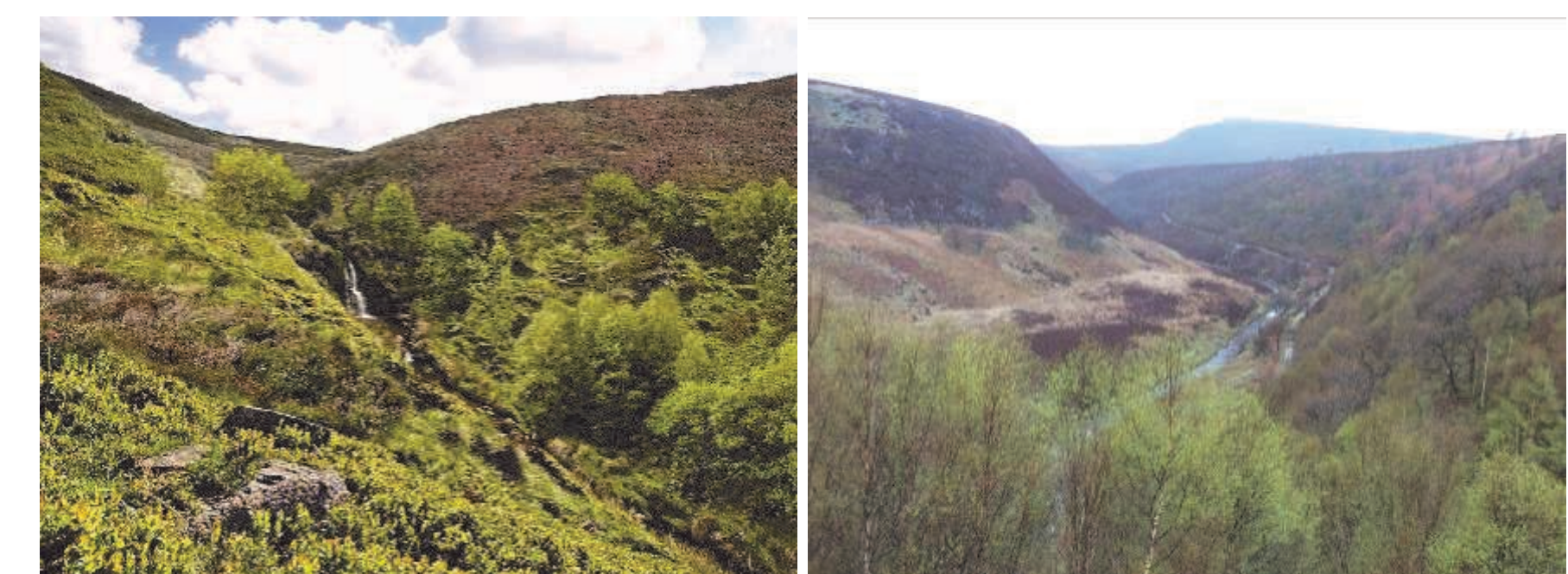
Map 2 – Woodland for Water & National Trust

Project Achievements

Dec 2013 approximately £2.5 million from English Woodland Grant Scheme was approved to regenerate up to 490 ha of woodland within the National Trust Peak District Estate. Clough Woodland Guiding Principles document was produced to develop clough woodland proposals within SPA, SAC & SSSI.

Clough Woodlands for the future

Building on the success of the pilot project, the Clough Woodland Project will continue to identify and develop opportunities for clough woodland restoration within upper river catchments, shown in Map 1. Moors for the Future Partnership are working with partner organisations to engage with landowners and land managers to develop high quality native broadleaf woodland aimed at delivering multiple benefits to people and wildlife locally, and nationally.



© National Trust © MFFP

Contact us

www.moorsforthefuture.org.uk

T: 075844471243 or at Rob.Twiggs@peakdistrict.gov.uk



The Clough Woodland project is delivered by Moors for the Future Partnership and funded by: Forestry Commission, Environment Agency, National Trust, and Royal Society for the Protection of Birds

