

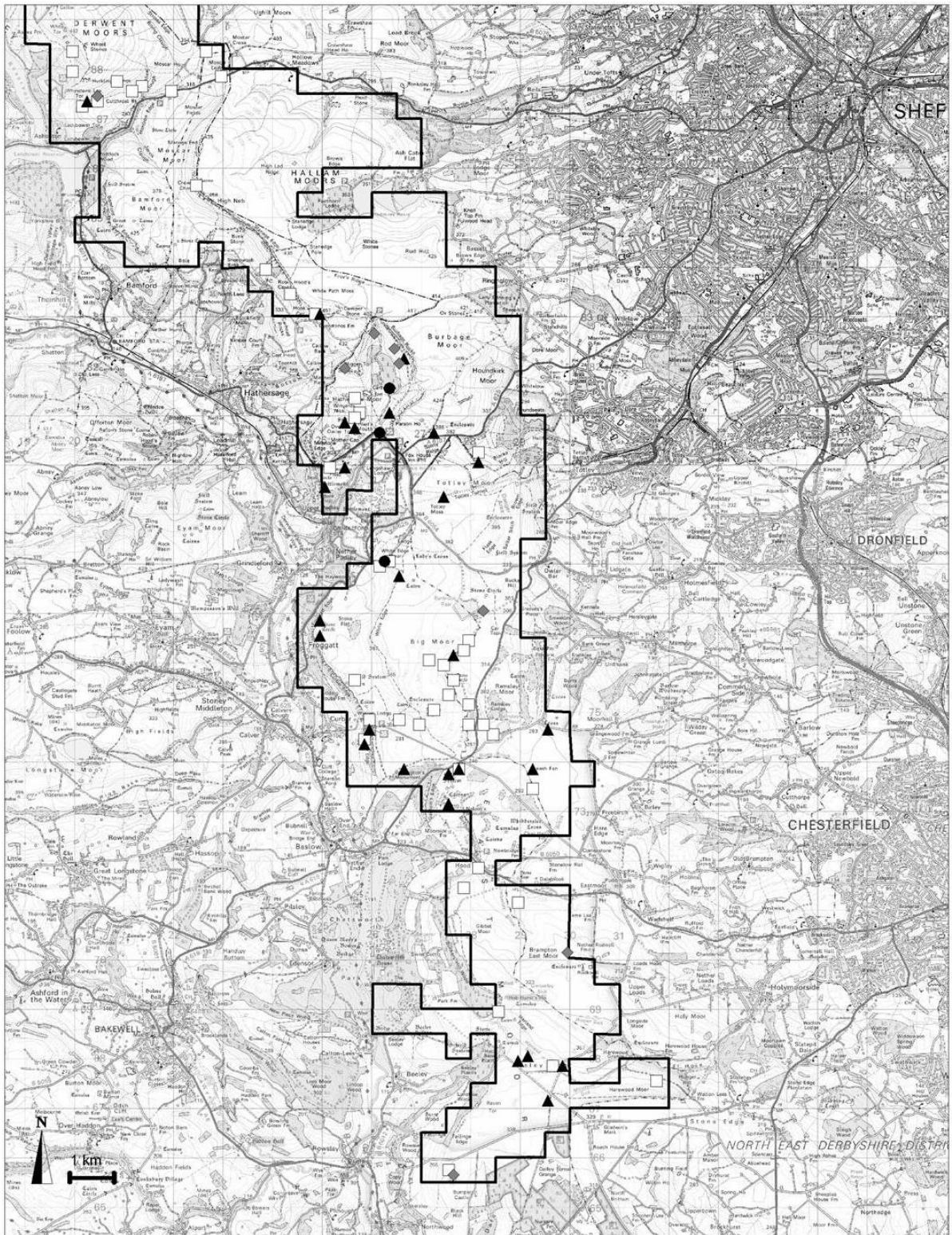
2004 Peak District Moorland Breeding Bird Survey

This map is reproduced from Ordnance Survey material with the permission of Controller of HMSO. Crown Copyright. All rights reserved. Peak District National Park Authority.

Map 12a: Dark Peak

2004 Distribution of breeding pairs of

- Redstart
- ▲ Stonechat
- Whinchat
- ◆ Wheatear
- ▭ Survey Area

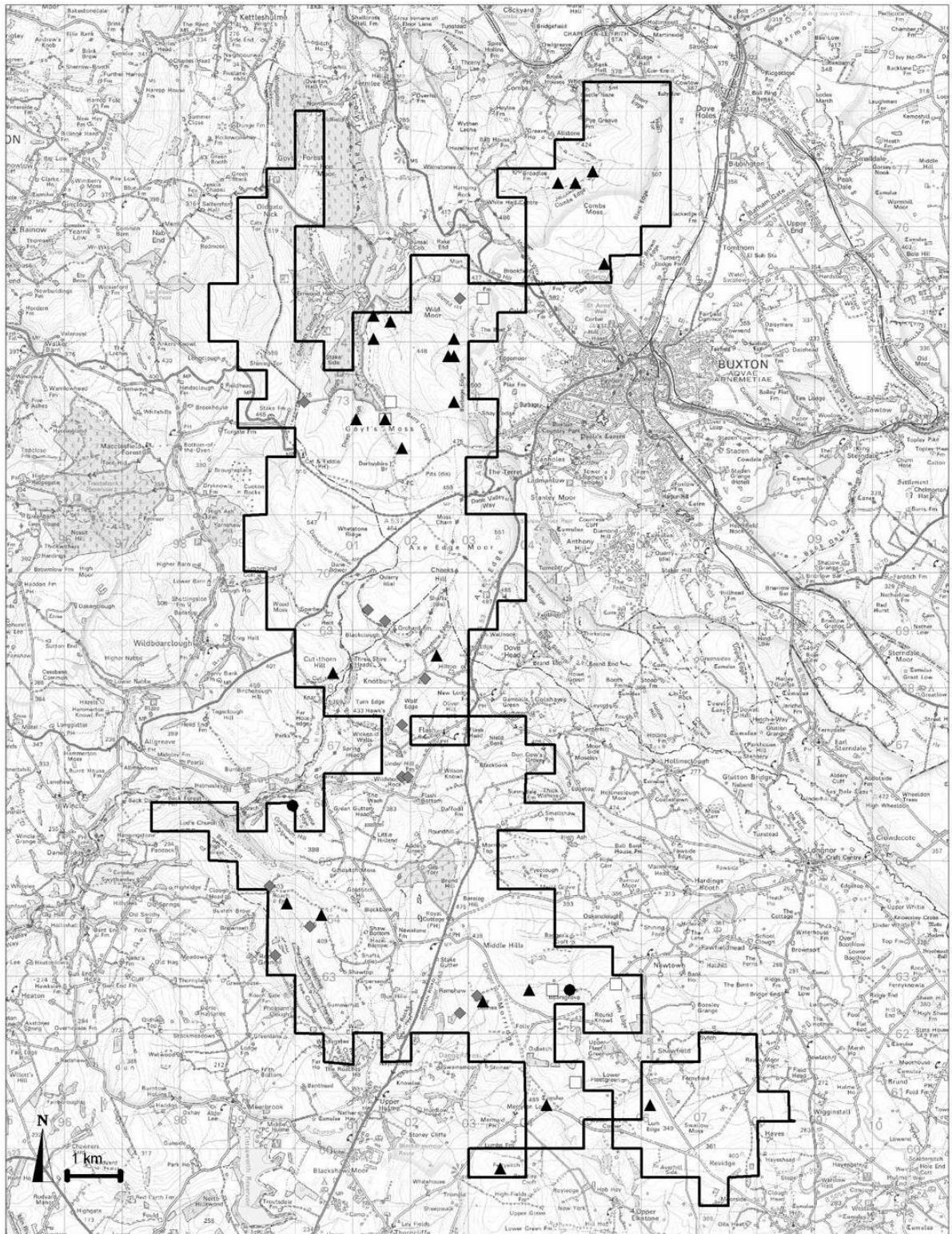


2004 Peak District Moorland Breeding Bird Survey

This map is reproduced from Ordnance Survey material with the permission of Controller of HMSO. Crown Copyright. All rights reserved. Peak District National Park Authority.

Map 12b: Eastern Moors
2004 Distribution of breeding pairs of

- Redstart
- ▲ Stonechat
- Whinchat
- ◆ Wheatear
- ▭ Survey Area



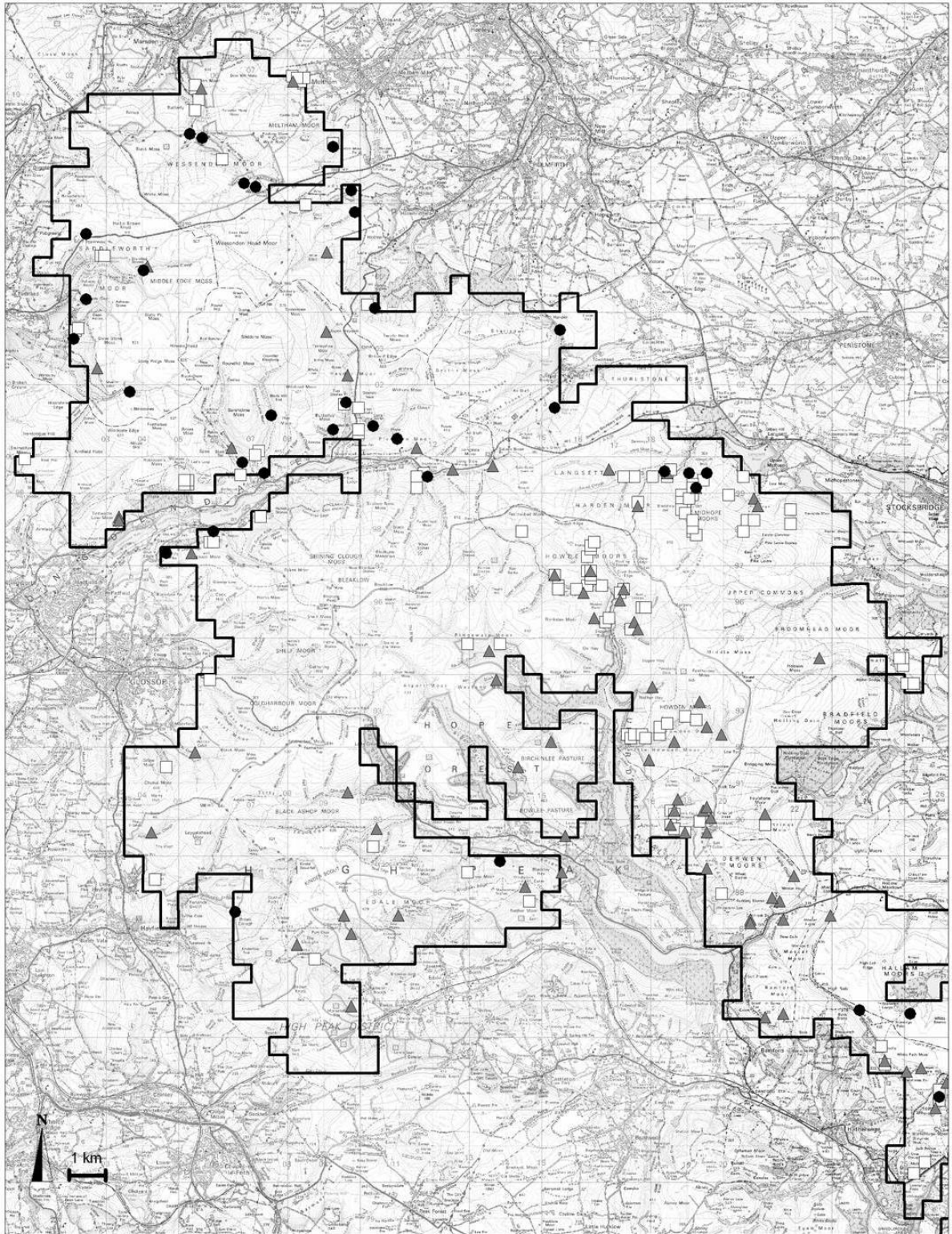
2004 Peak District Moorland Breeding Bird Survey

This map is reproduced from Ordnance Survey material with the permission of Controller of HMSO. Crown Copyright. All rights reserved. Peak District National Park Authority.

Map 12c: SW Peak

2004 Distribution of breeding pairs

- Redstart
- ▲ Stonechat
- ◆ Wheatear
- Whinchat
- ▭ Survey Area

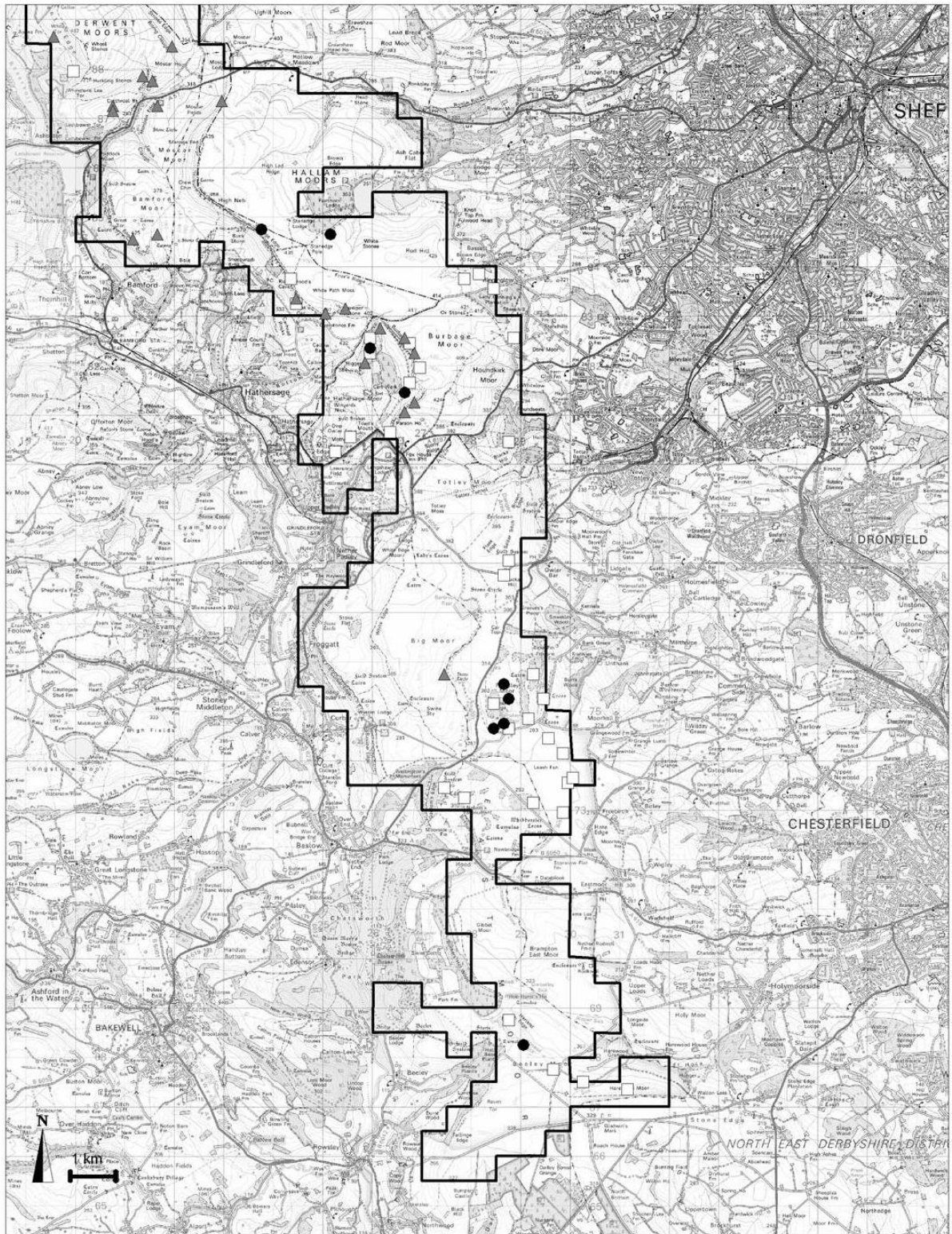


2004 Peak District Moorland Breeding Bird Survey

This map is reproduced from Ordnance Survey material with the permission of Controller of HMSO. Crown Copyright. All rights reserved. Peak District National Park Authority.

Map 13a: Dark Peak
 2004 Distribution of breeding pairs of

- Mistle Thrush
- ▲ Ring Ouzel
- Willow Warbler
- ▭ Survey Area



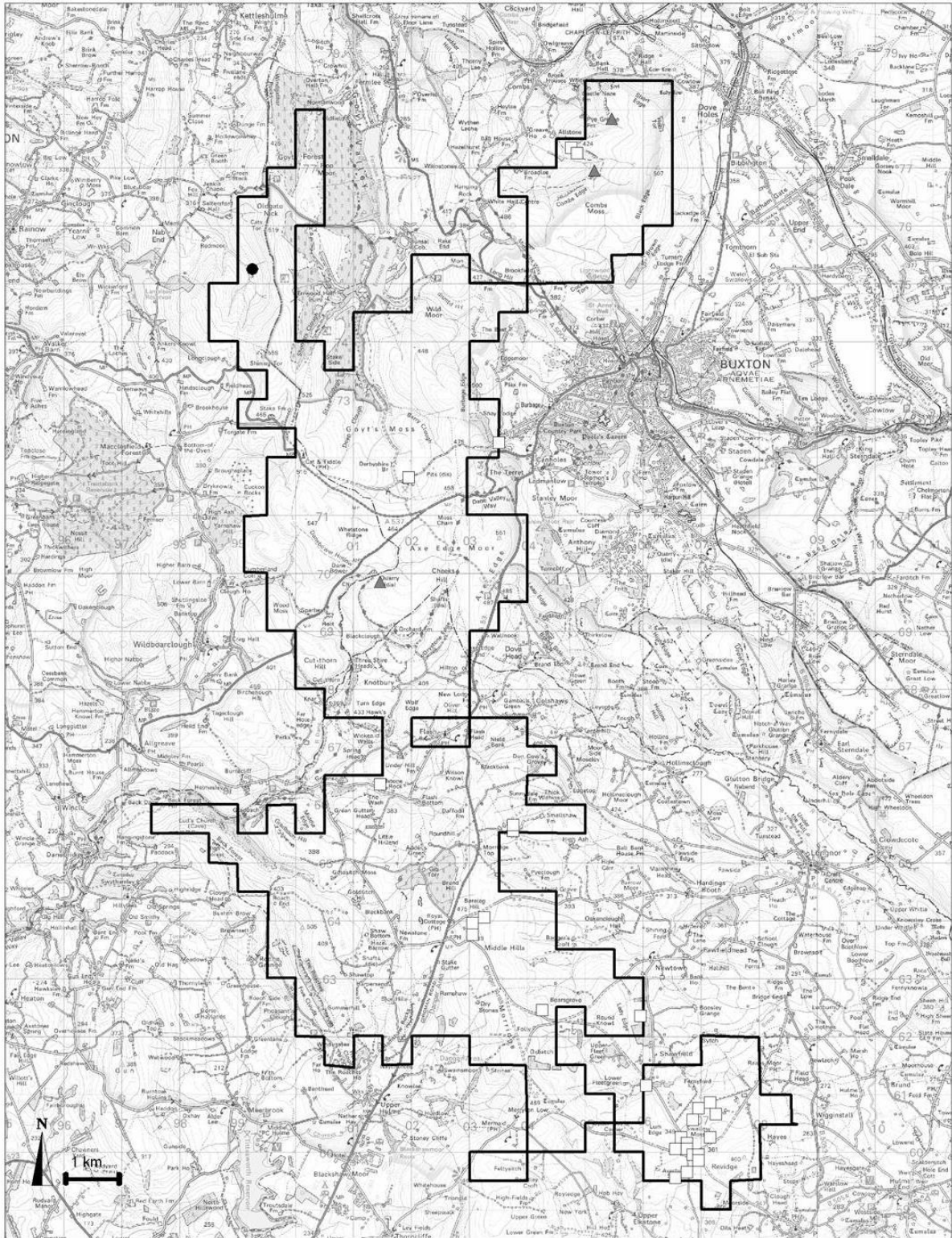
2004 Peak District Moorland Breeding Bird Survey

This map is reproduced from Ordnance Survey material with the permission of Controller of HMSO. Crown Copyright. All rights reserved. Peak District National Park Authority.

Map 13b: Eastern Moors

2004 Distribution of breeding pairs of

- Mistle Thrush
- ▲ Ring Ouzel
- Willow Warbler
- ▭ Survey Area

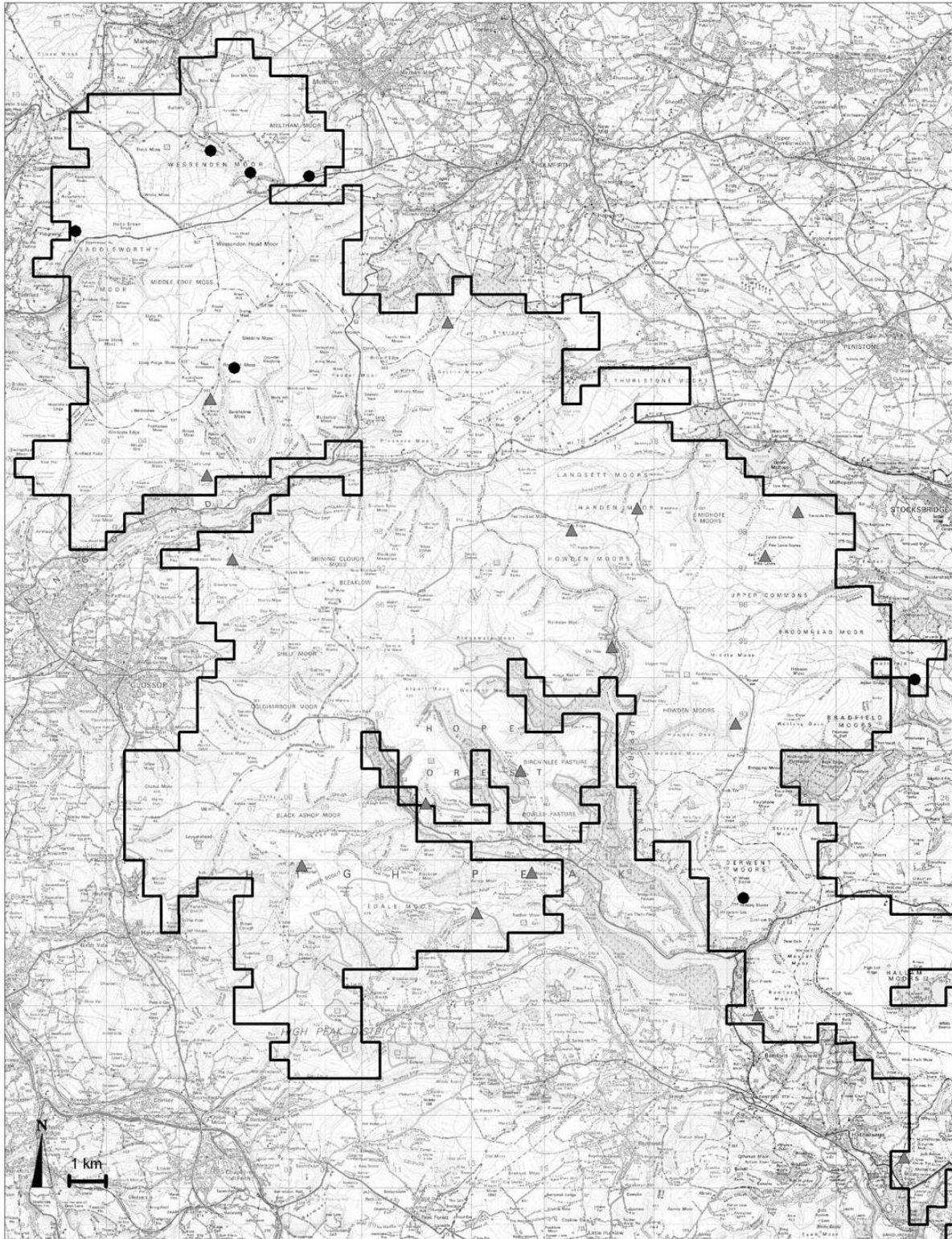


2004 Peak District Moorland Breeding Bird Survey

This map is reproduced from Ordnance Survey material with the permission of Controller of HMSO. Crown Copyright. All rights reserved. Peak District National Park Authority.

Map 13c: SW Peak
 2004 Distribution of breeding pairs

- Mistle Thrush
- ▲ Ring Ouzel
- Willow Warbler
- ▭ Survey Area



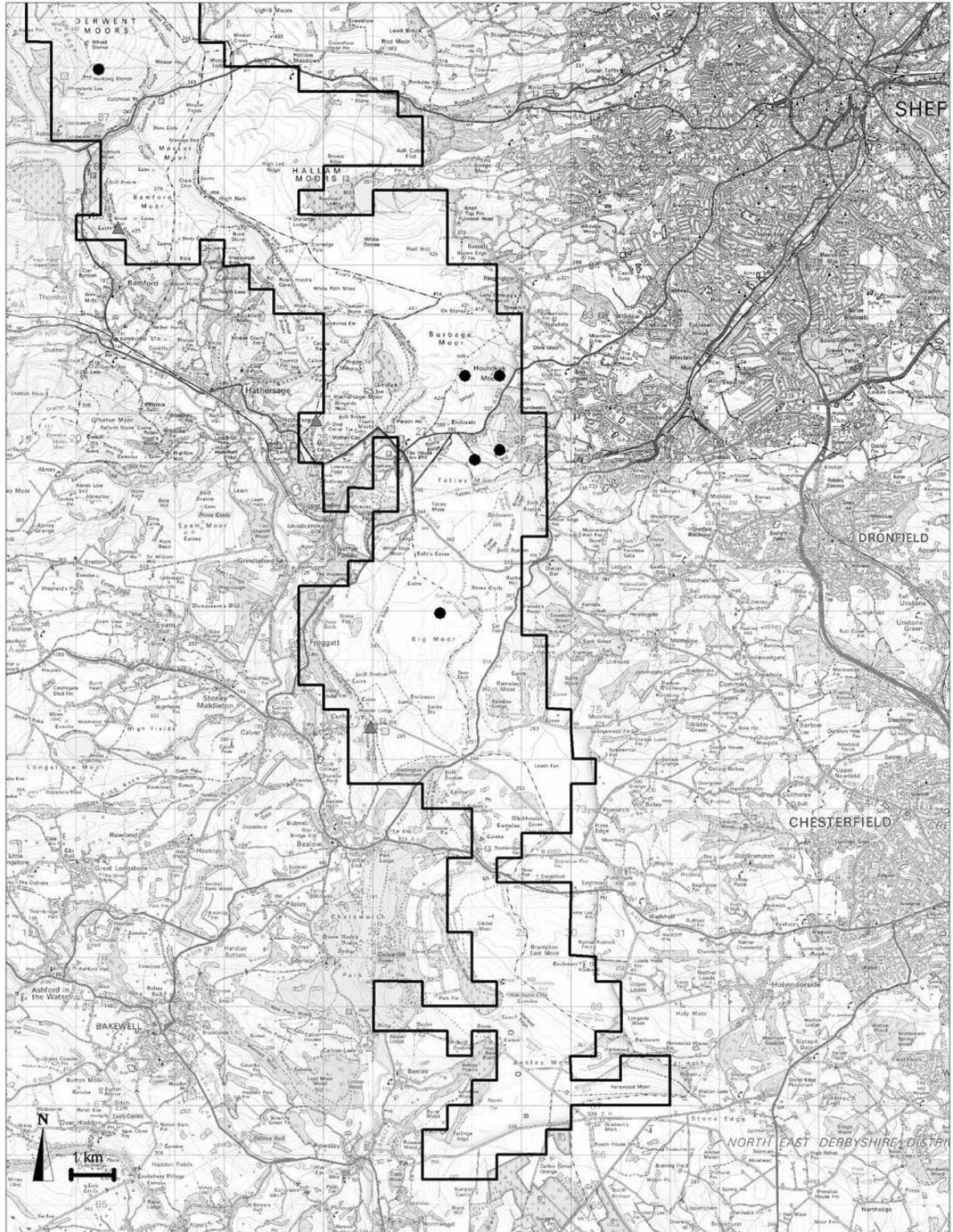
2004 Peak District Moorland Breeding Bird Survey

This map is reproduced from Ordnance Survey material with the permission of Controller of HMSO. Crown Copyright. All rights reserved. Peak District National Park Authority.

Map 14a: Dark Peak

2004 Distribution of breeding pairs of

- Carrion Crow
- ▲ Raven
- ▭ Survey Area



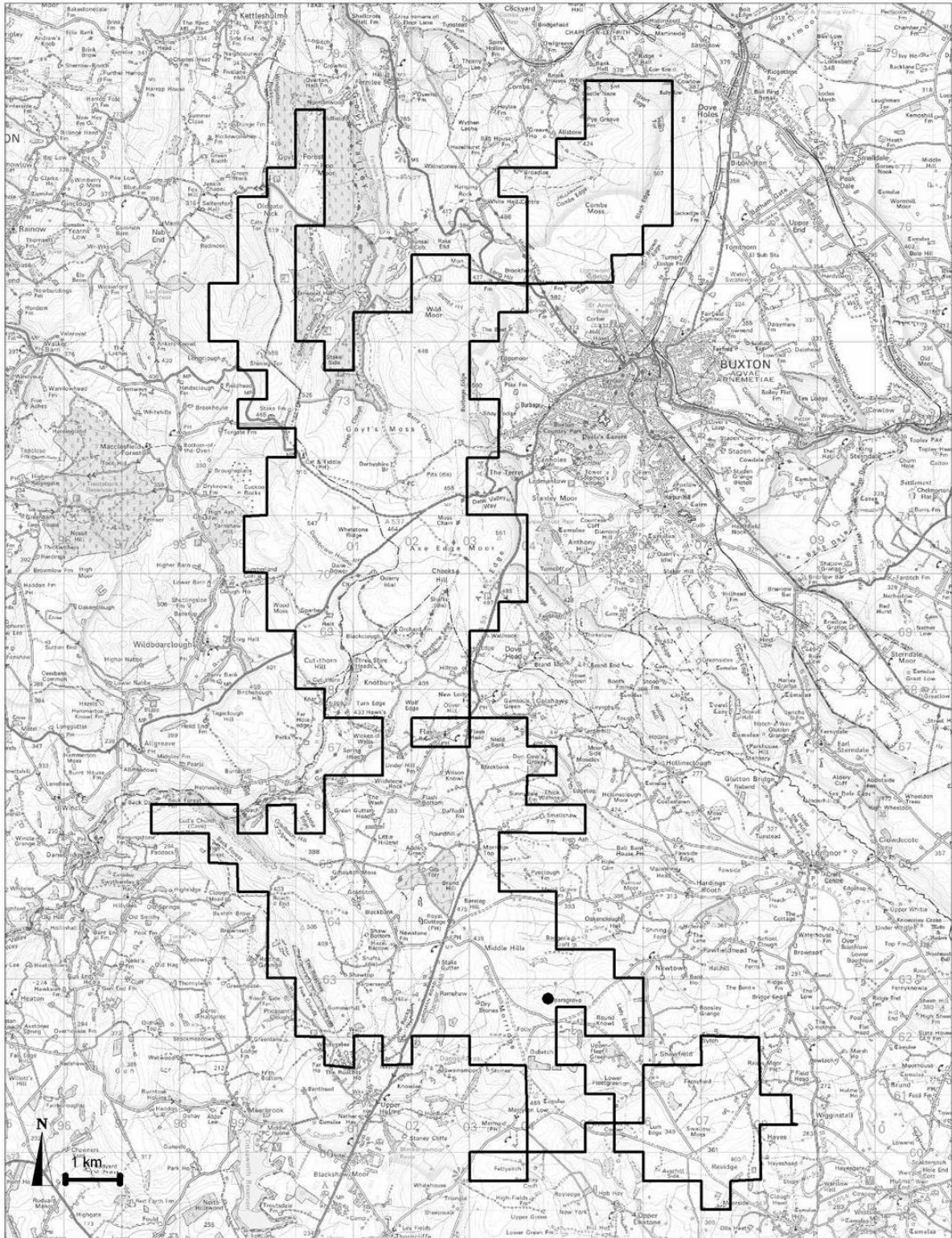
2004 Peak District Moorland Breeding Bird Survey

This map is reproduced from Ordnance Survey material with the permission of Controller of HMSO. Crown Copyright. All rights reserved. Peak District National Park Authority.

Map 14b: Eastern Moors

2004 Distribution of breeding pairs of

- Carrion Crow
- ▲ Raven
- ▭ Survey Area



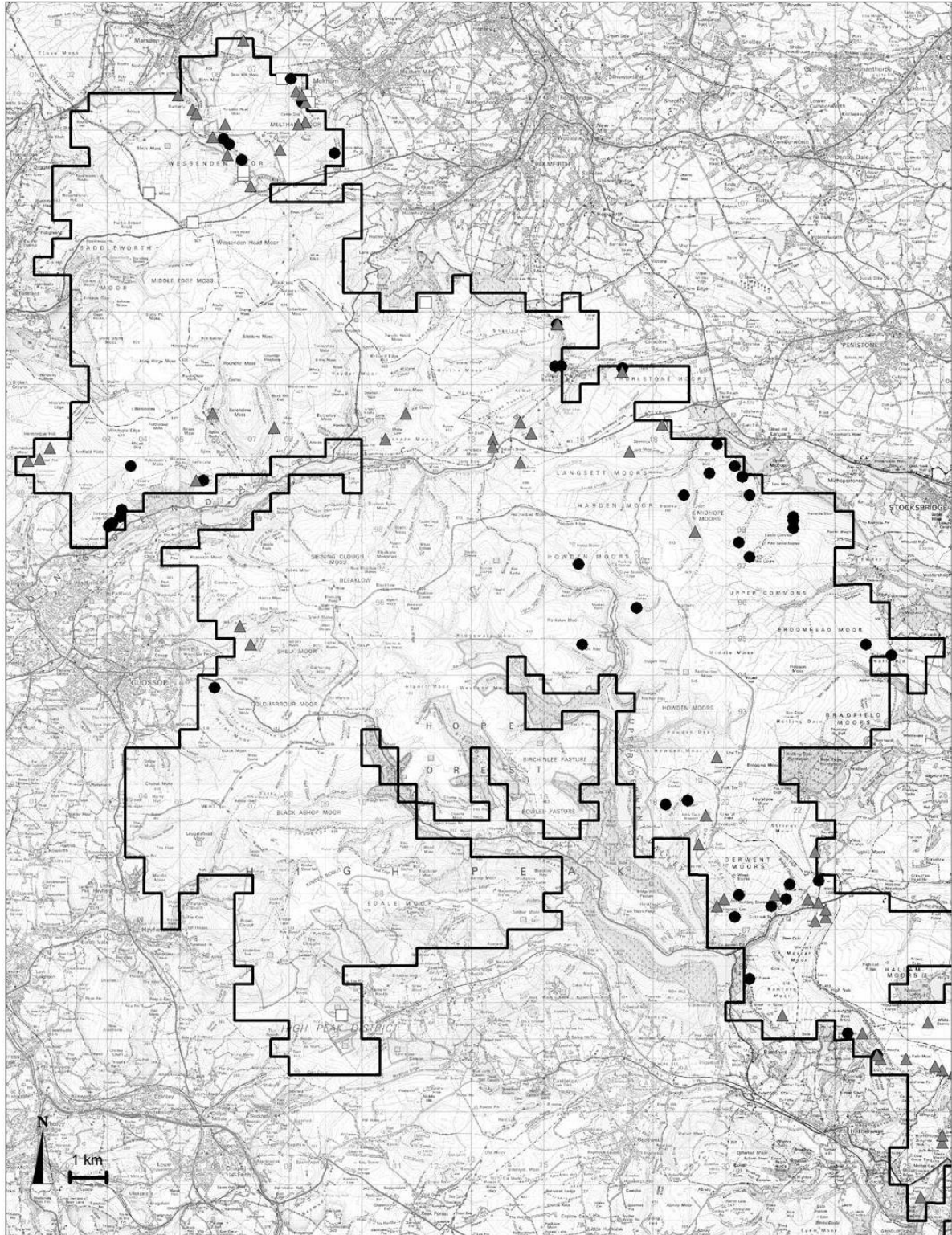
2004 Peak District Moorland Breeding Bird Survey

This map is reproduced from Ordnance Survey material with the permission of Controller of HMSO. Crown Copyright. All rights reserved. Peak District National Park Authority.

Map 14c: SW Peak

2004 Distribution of breeding pairs

- Carrion Crow
- ▲ Raven
- ▭ Survey Area



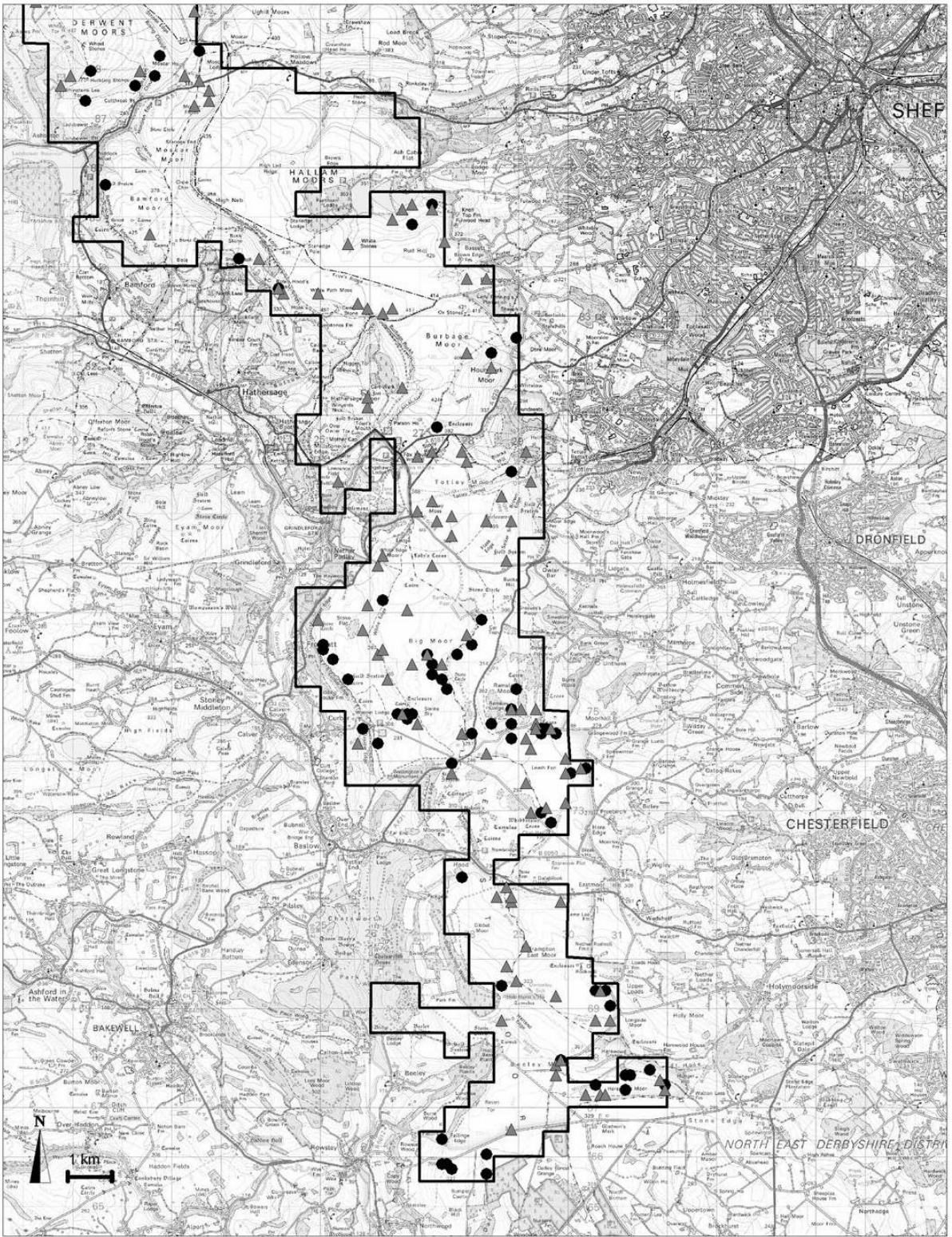
2004 Peak District Moorland Breeding Bird Survey

This map is reproduced from Ordnance Survey material with the permission of Controller of HMSO. Crown Copyright. All rights reserved. Peak District National Park Authority.

Map 15a: Dark Peak

2004 Distribution of breeding pairs of

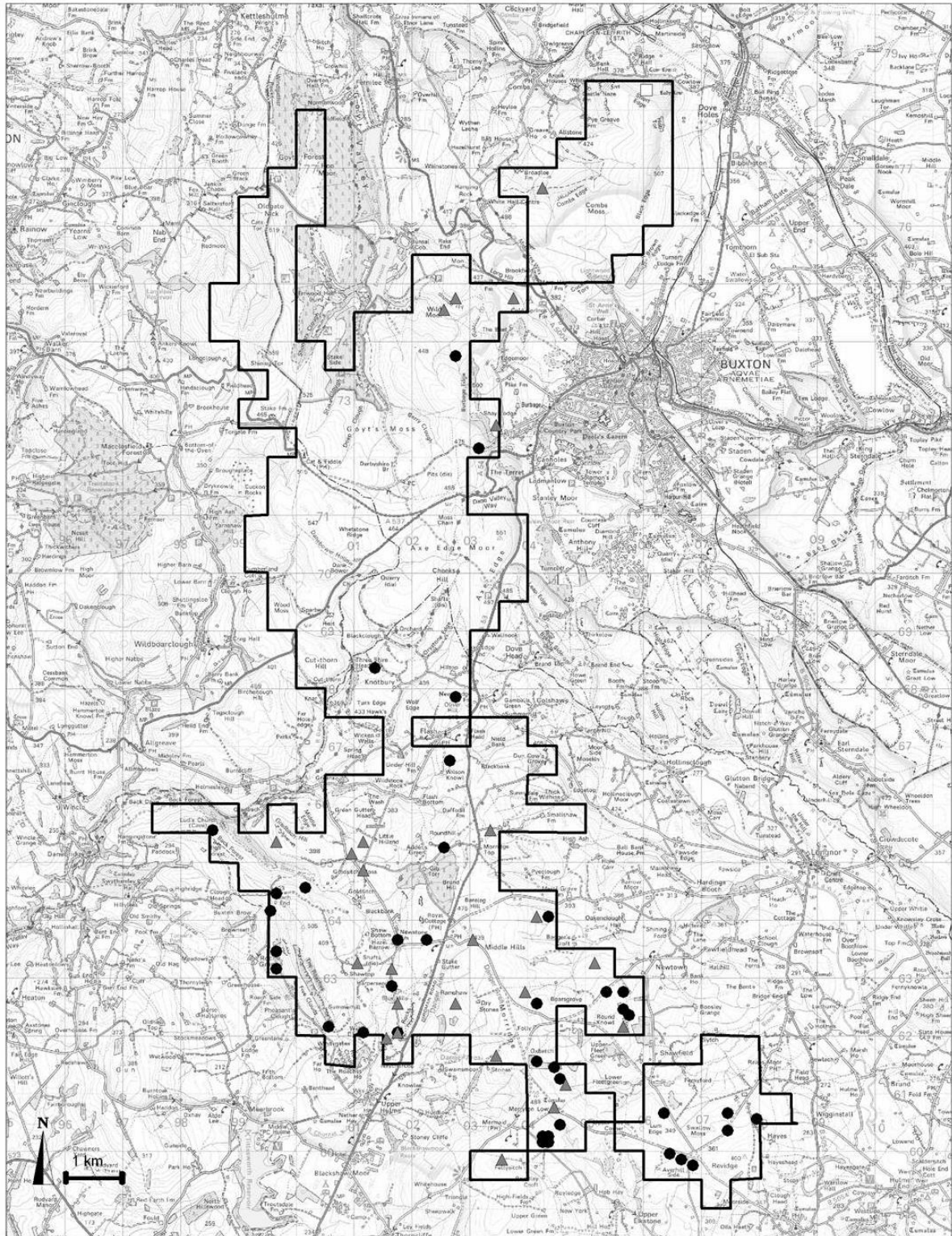
- Linnet
- ▲ Reed Bunting
- Twite
- ▭ Survey Area



2004 Peak District Moorland Breeding Bird Survey

This map is reproduced from Ordnance Survey material with the permission of Controller of HMSO. Crown Copyright. All rights reserved. Peak District National Park Authority.

- Map 15b: Eastern Moors**
 2004 Distribution of breeding pairs of
- Linnet
 - ▲ Reed Bunting
 - Twite
 - ▭ Survey Area



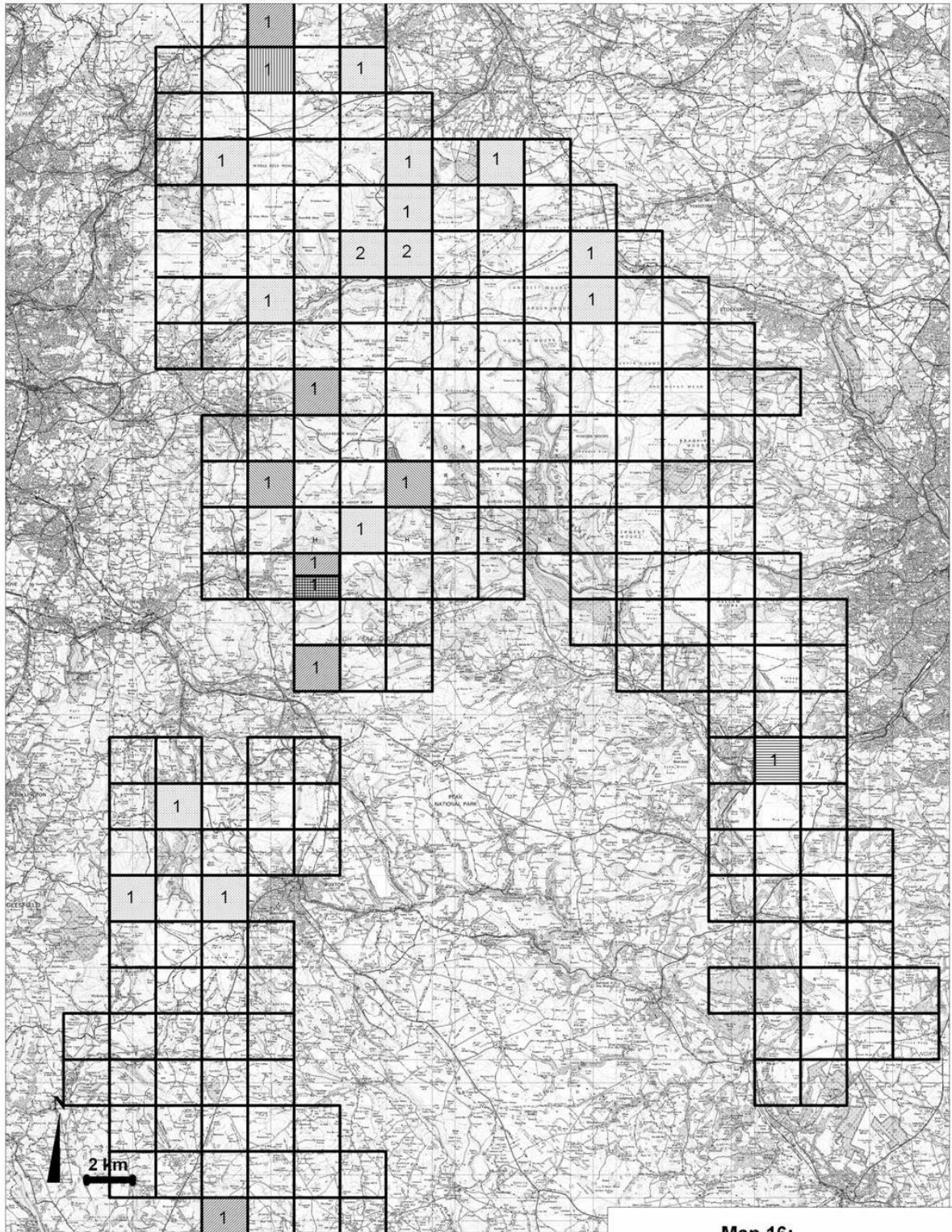
2004 Peak District Moorland Breeding Bird Survey

This map is reproduced from Ordnance Survey material with the permission of Controller of HMSO. Crown Copyright. All rights reserved. Peak District National Park Authority.

Map 15c: SW Peak

2004 Distribution of breeding pairs of

- Linnet
- ▲ Reed Bunting
- Twite
- ▭ Survey Area



2004 Peak District Moorland Breeding Bird Survey

This map is reproduced from Ordnance Survey material with the permission of Controller of HMSO Crown Copyright. All rights reserved. Peak District National Park Authority.

Map 16:

2004 Distribution of raptors and owls

- None
- Goshawk
- Great Spotted Woodpe
- Hobby
- Little Owl
- Long-eared Owl
- Sparrowhawk

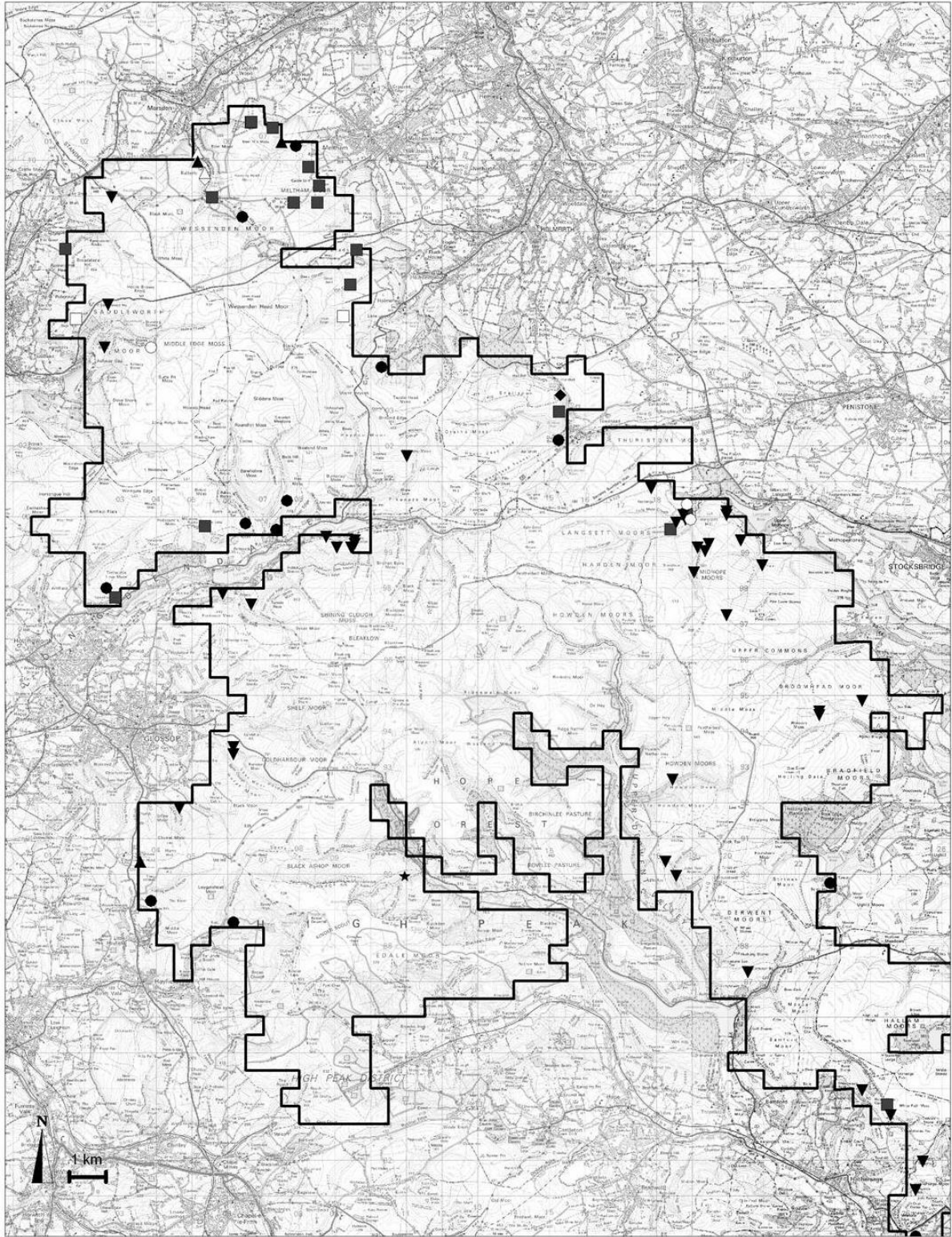
2 Number present in tetrad (tetrad split for multiple species)

Map 17 a-c Legend: Dark Peak

2004 Distribution of breeding pairs of Water birds, Game birds, and Near Passerines

- Cuckoo
- ▲ Grey Heron
- Grey Partridge
- ◆ Little Grebe
- ▼ Pheasant
- ★ Red-breasted Meganser
- Red-legged Partridge
- △ Scaup
- Stock Dove
- ◇ Tufted Duck

▭ Survey Area




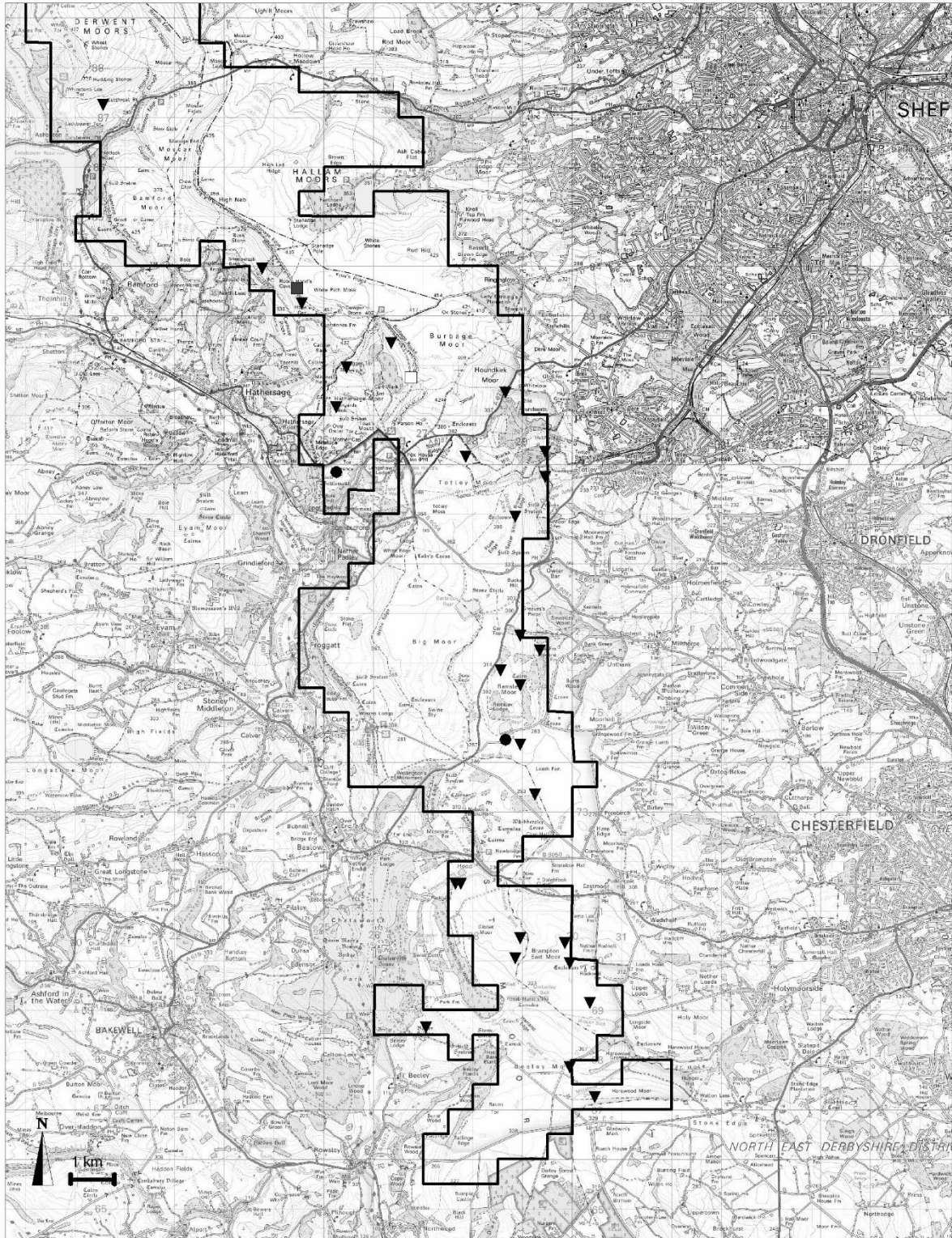
2004 Peak District Moorland Breeding Bird Survey

This map is reproduced from Ordnance Survey material with the permission of Controller of HMSO. Crown Copyright. All rights reserved.
Peak District National Park Authority.

Map 17a: Dark Peak. See separate legend

Water, game and near passerine birds

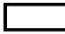
 Survey Area

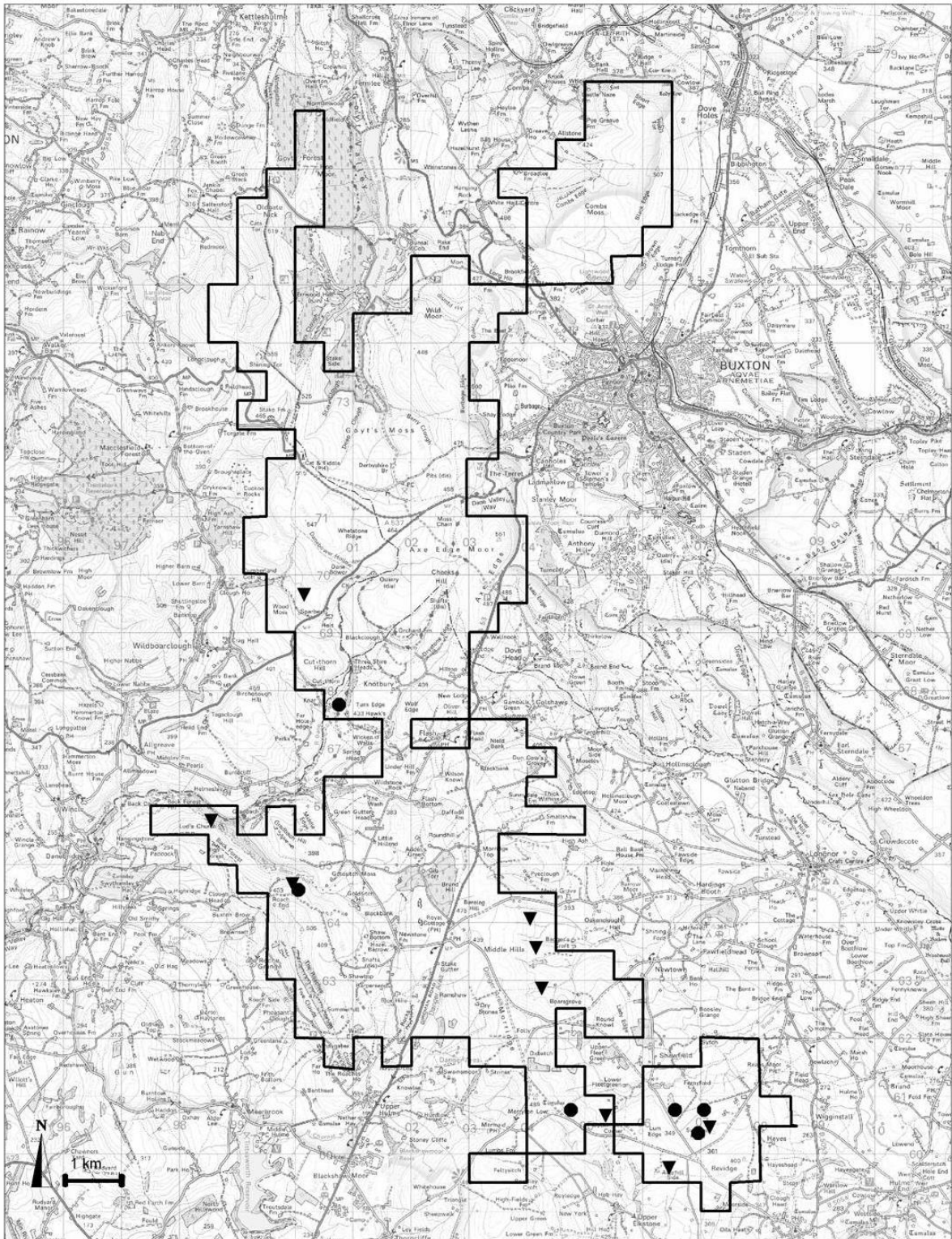


2004 Peak District Moorland Breeding Bird Survey

This map is reproduced from Ordnance Survey material with the permission of Controller of HMSO. Crown Copyright. All rights reserved. Peak District National Park Authority.

Map 17b: Eastern Moors. See separate legend
 Water, game and near passerine birds


 Survey Area



2004 Peak District Moorland Breeding Bird Survey

This map is reproduced from Ordnance Survey material with the permission of Controller of HMSO. Crown Copyright. All rights reserved. Peak District National Park Authority.


Map 17c: SW Peak. See separate legend
Water, game and near passerine birds

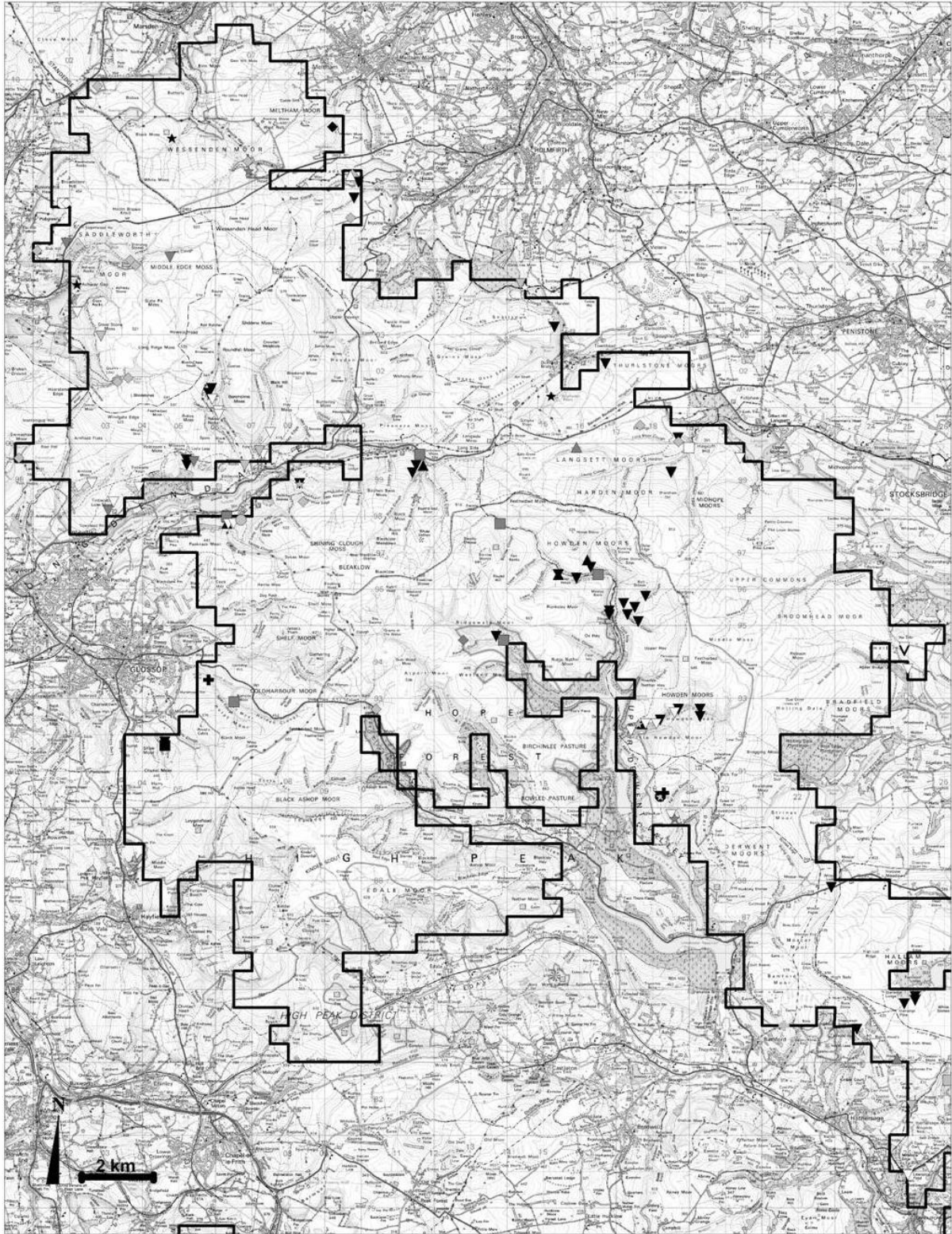
 Survey Area

Maps 18 a-c: Legend

f breeding pairs of larks, thrushes, warblers, tits, crows, finches and buntings

- Blackbird
- ▲ Blackcap
- Blue Tit
- ◆ Bullfinch
- ▼ Chaffinch
- ★ Chiffchaff
- Chough
- ▲ Dunnock
- Garden Warbler
- ◆ Goldcrest
- ▼ Goldfinch
- ★ Great Tit
- Greenfinch
- ▲ Jackdaw
- Magpie
- ◆ Pied Wagtail
- ▼ Redpoll
- ☆ Robin
- Rook
- △ Sedge Warbler
- Song Thrush
- ◇ Starling
- ▽ Tree Pipit
- ☆ Whitethroat
- ✚ Woodpigeon
- ✚ Yellowhammer

 Survey Area




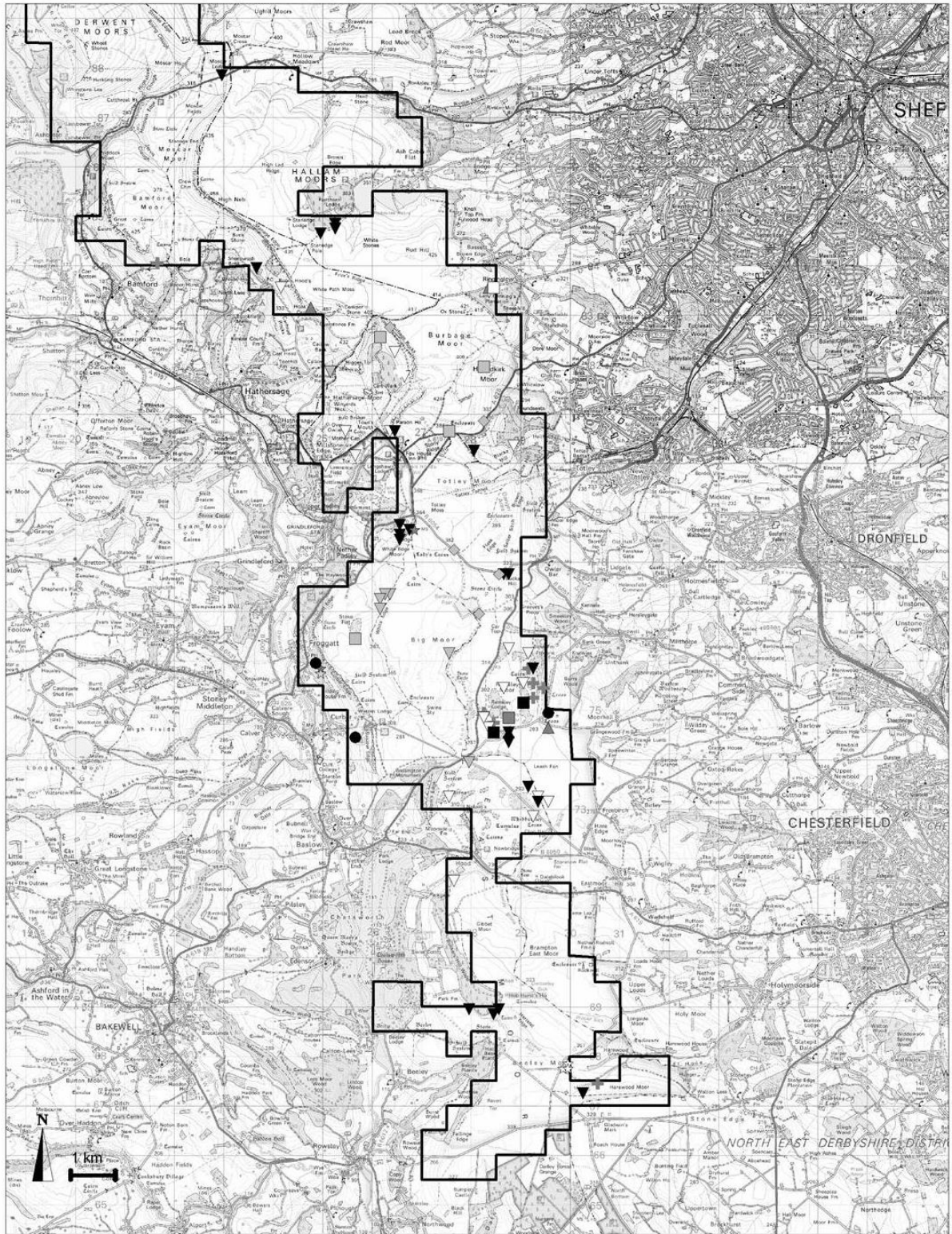
2004 Peak District Moorland Breeding Bird Survey

This map is reproduced from Ordnance Survey material with the permission of Controller of HMSO Crown Copyright. All rights reserved. Peak District National Park Authority.

Map 18a Dark Peak

See separate legend

 Survey Area

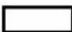


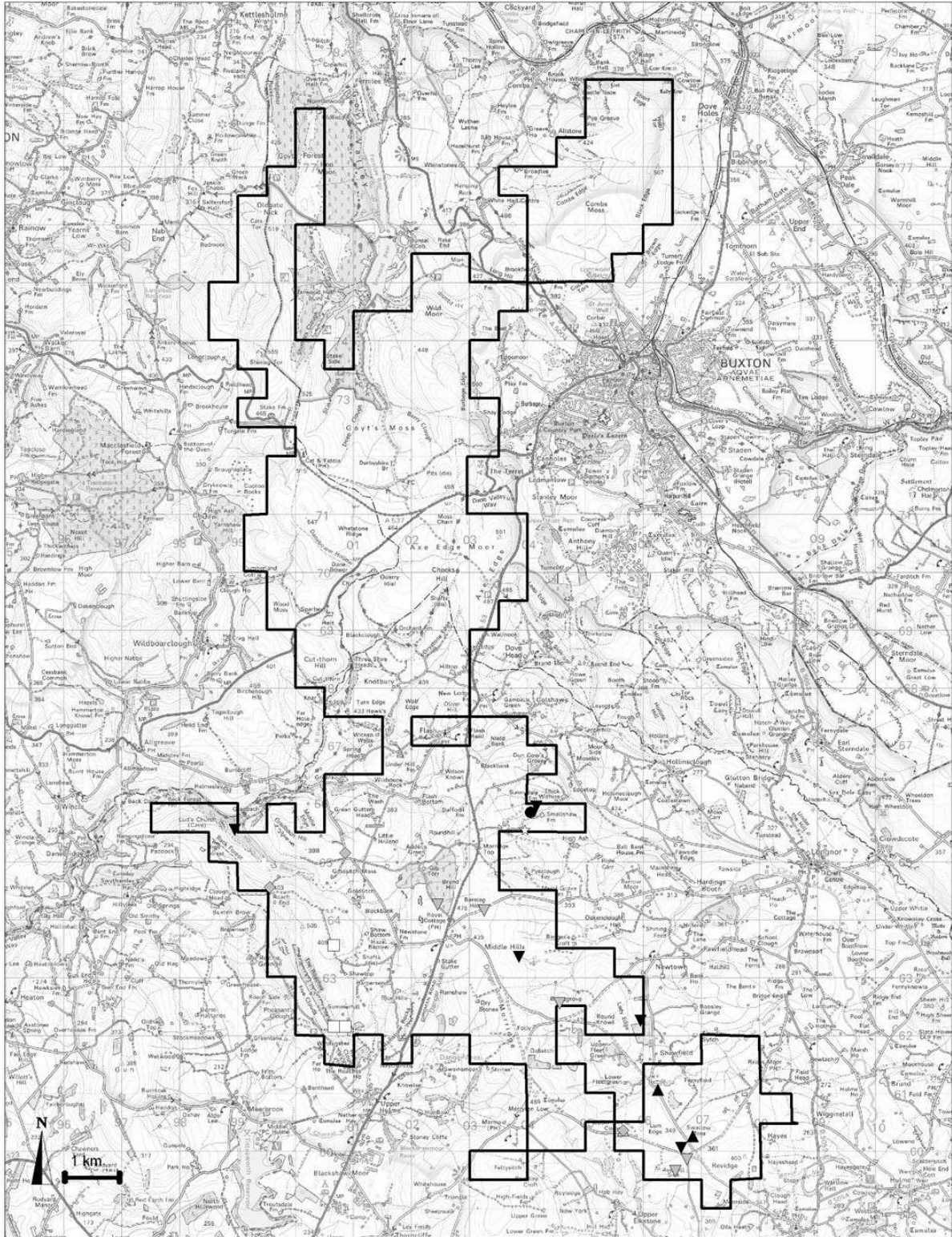
2004 Peak District Moorland Breeding Bird Survey

This map is reproduced from Ordnance Survey material with the permission of Controller of HMSO. Crown Copyright. All rights reserved. Peak District National Park Authority.

Map 18b: Eastern Moors


See separate legend

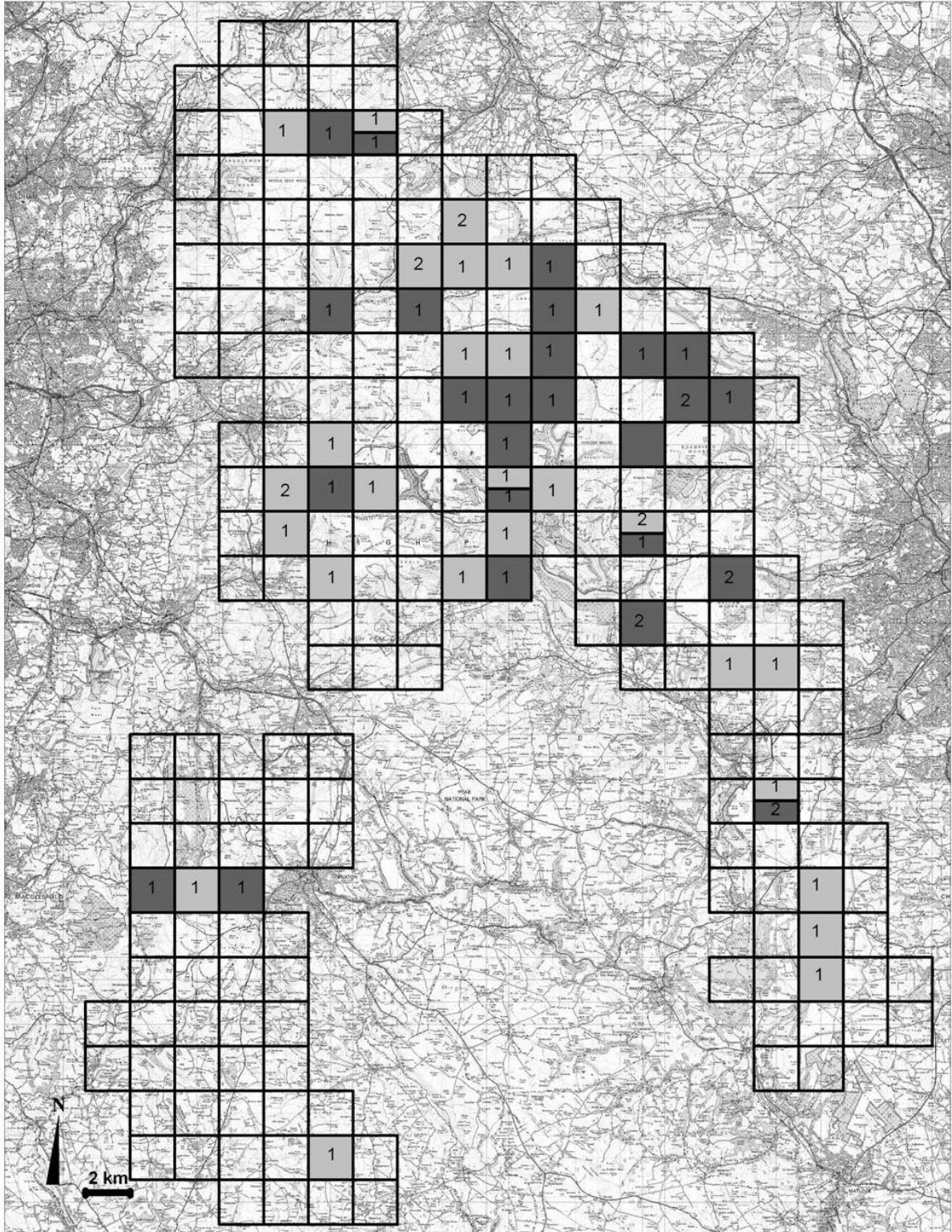
 Survey Area



2004 Peak District Moorland Breeding Bird Survey

This map is reproduced from Ordnance Survey material with the permission of Controller of HMSO. Crown Copyright. All rights reserved.
Peak District National Park Authority.

Map 18c: SW Peak
See separate legend
 Survey Area



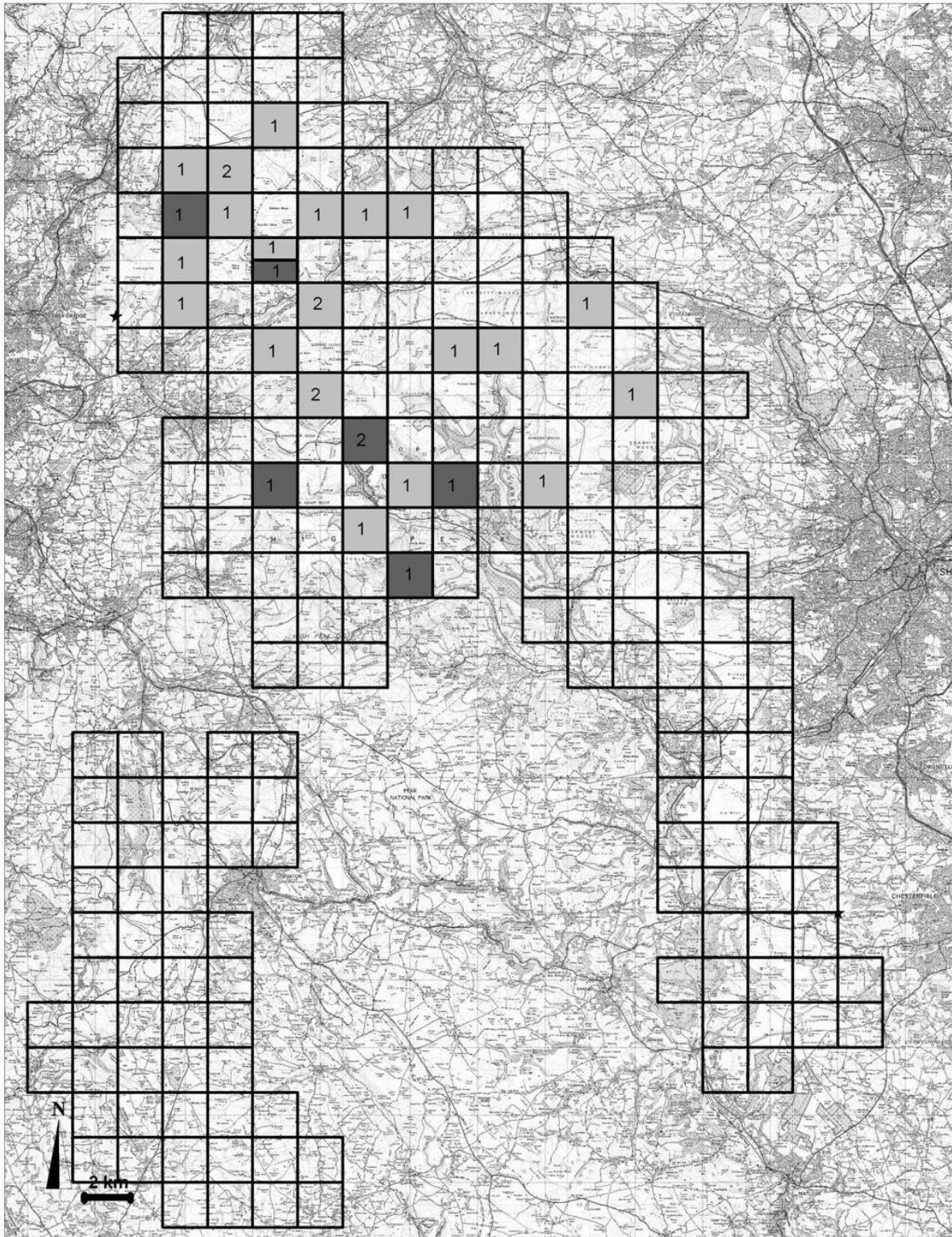
2004 Peak District Moorland Breeding Bird Survey

This map is reproduced from Ordnance Survey material with the permission of Controller of HMSO Crown Copyright. All rights reserved. Peak District National Park Authority.

Map 19
Distribution change 1990 - 2004 Merlin

- 2004
- 1990

2 Number present in tetrad (tetrad split for multiple years)



2004 Peak District Moorland Breeding Bird Survey

This map is reproduced from Ordnance Survey material with the permission of Controller of HMSO Crown Copyright. All rights reserved. Peak District National Park Authority.

Map 20

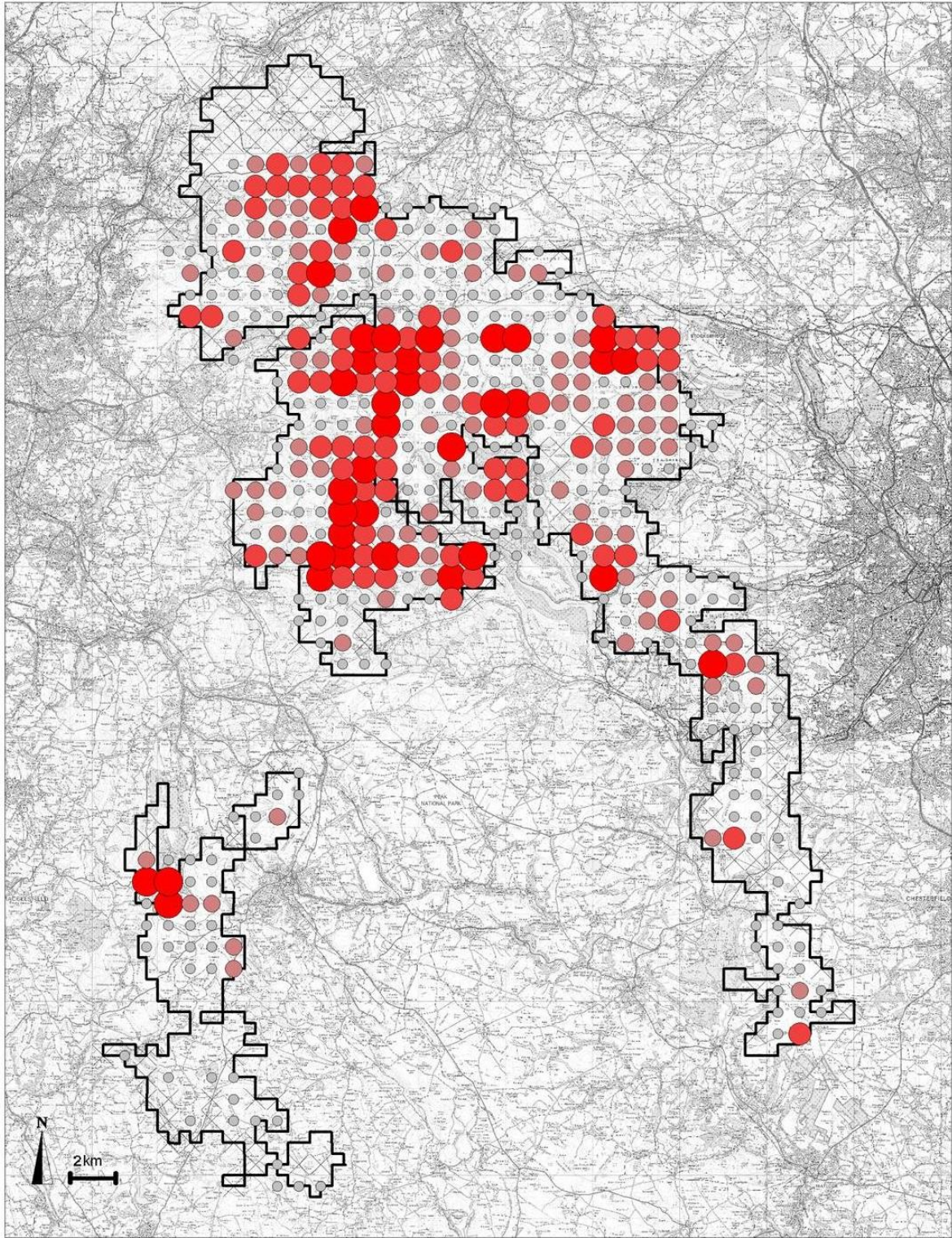
Distribution change 1990 - 2004 Peregrine

■ 2004

■ 1990

2

Number present in tetrad (tetrad split for multiple years)



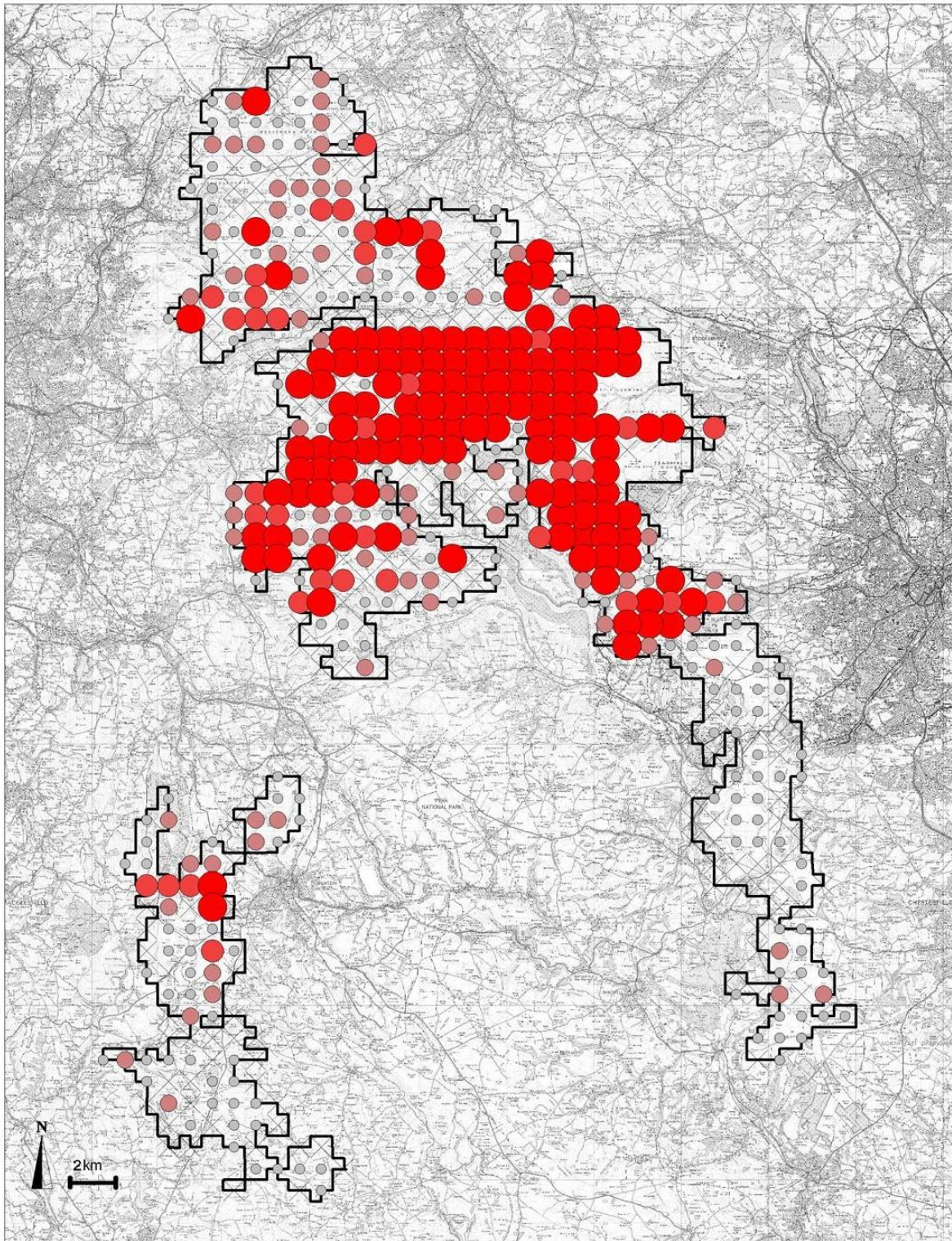
2004 Peak District Moorland Breeding Bird Survey

This map is reproduced from Ordnance Survey material with the permission of Controller of HMSO. Crown Copyright. All rights reserved. Peak District National Park Authority.

Map 21a
1990 Distribution of Red Grouse

- 1 to 5 (363)
- 6 to 10 (138)
- 11 to 15 (83)
- 16 to 99 (36)
- × no count (355)

Survey Area



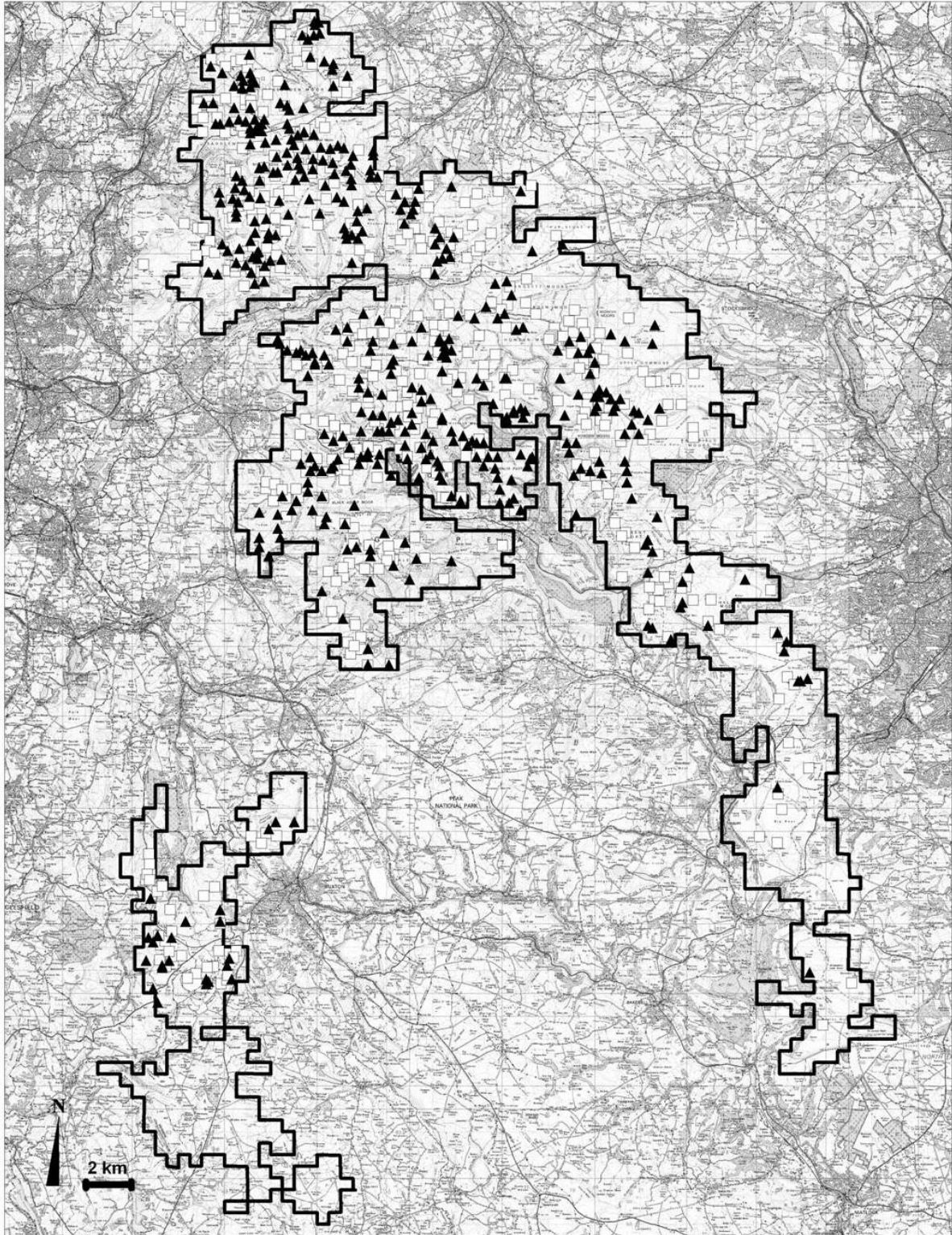
2004 Peak District Moorland Breeding Bird Survey

This map is reproduced from Ordnance Survey material with the permission of Controller of HMSO. Crown Copyright. All rights reserved. Peak District National Park Authority.

Map 21b
2004 Distribution of Red Grouse

- 1 to 5 (162)
- 6 to 10 (71)
- 11 to 15 (37)
- 16 to 99 (133)
- ⊗ no count (182)

▭ Survey Area



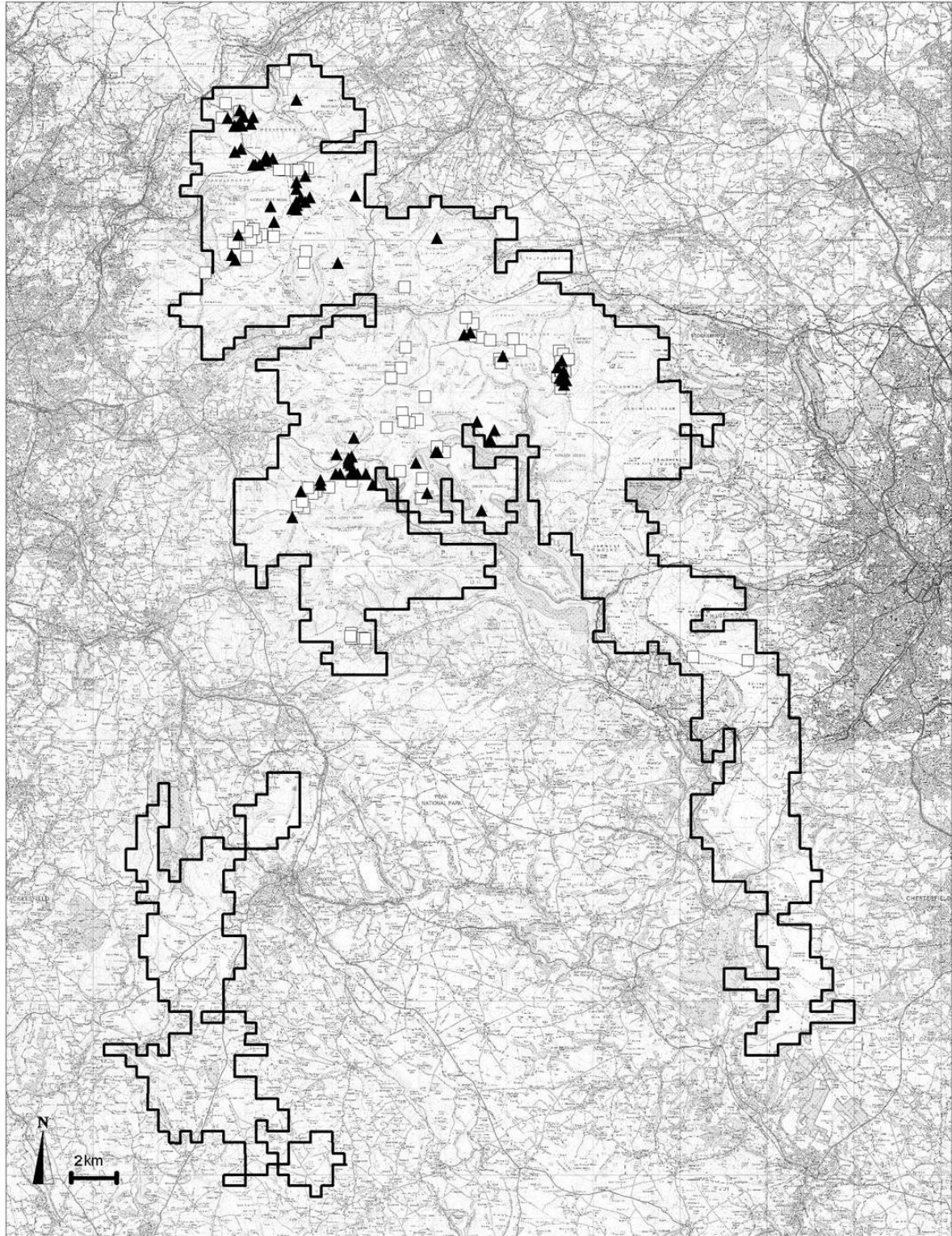
2004 Peak District Moorland Breeding Bird Survey

This map is reproduced from Ordnance Survey material with the permission of Controller of HMSO Crown Copyright. All rights reserved. Peak District National Park Authority.

Map 22

Distribution change 1990 - 2004 Golden plover

- 1990 breeding pairs
- ▲ 2004 breeding pair
- ▭ Survey area



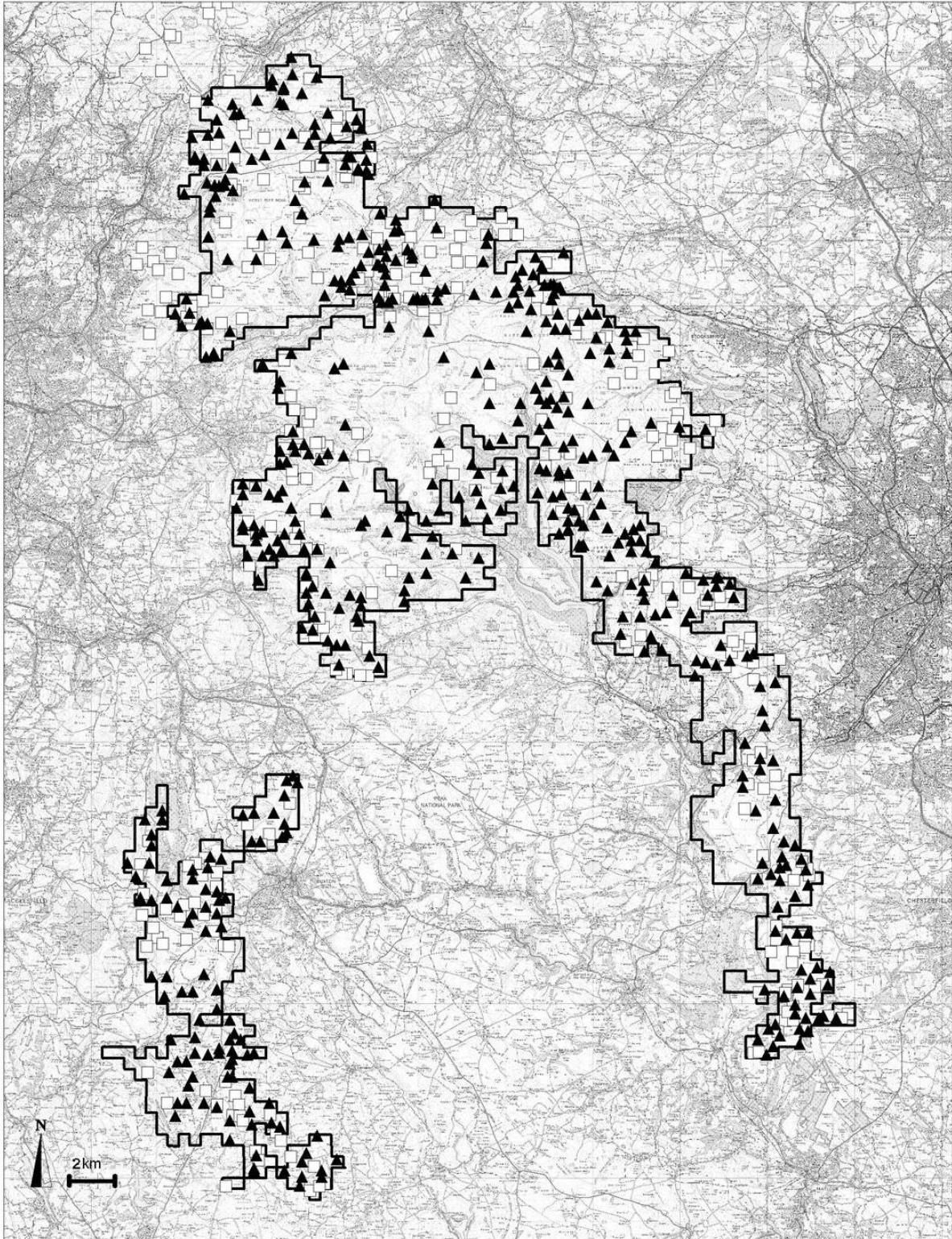
2004 Peak District Moorland Breeding Bird Survey

This map is reproduced from Ordnance Survey material with the permission of Controller of HMSO. Crown Copyright. All rights reserved. Peak District National Park Authority.

Map 23

Distribution Change 1990 - 2004 Dunlin

- 1990 breeding pair
- ▲ 2004 breeding pair
- ▭ Survey Area



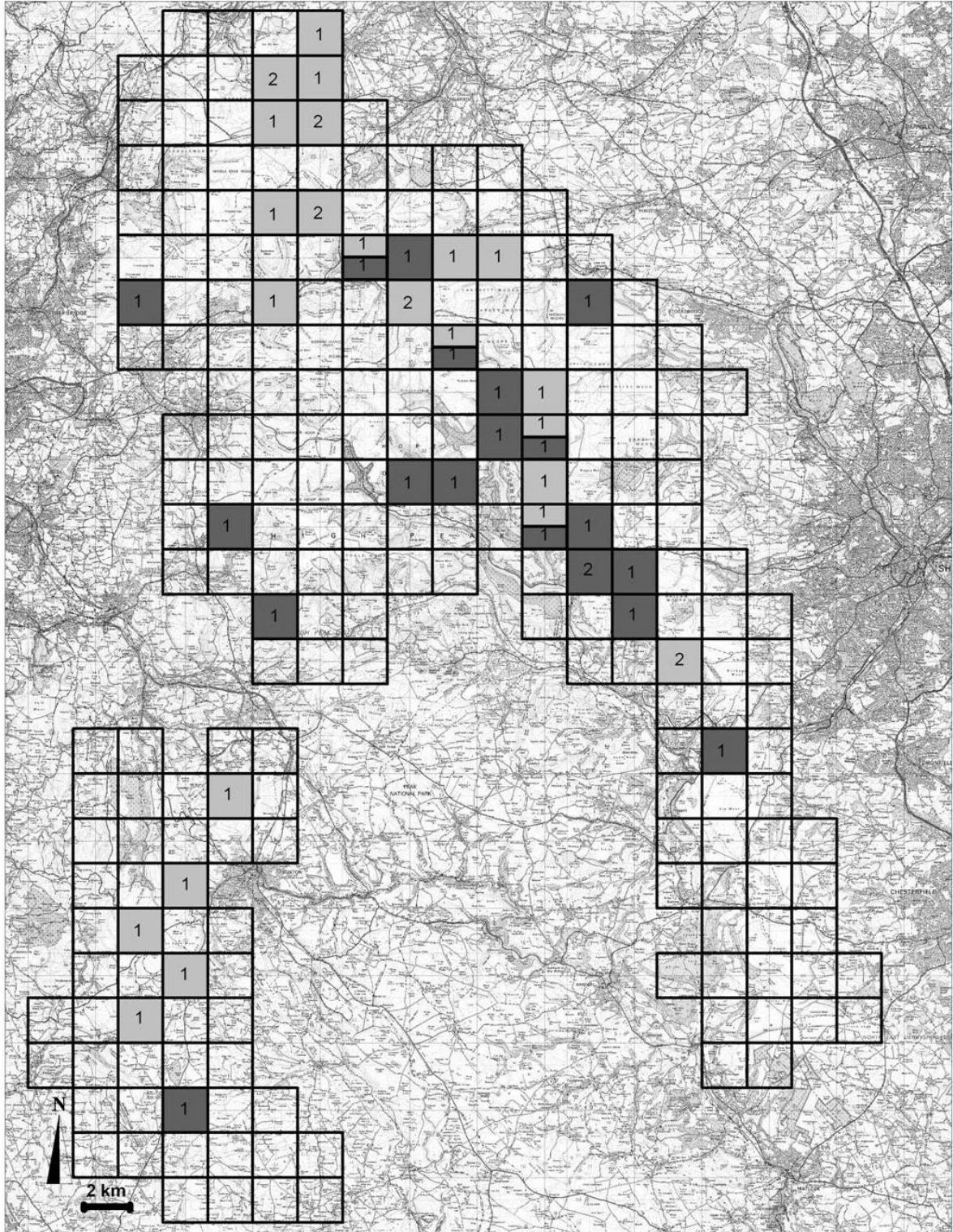
2004 Peak District Moorland Breeding Bird Survey

This map is reproduced from Ordnance Survey material with the permission of Controller of HMSO. Crown Copyright. All rights reserved. Peak District National Park Authority.

Map 24

Distribution change 1990 -2004 Curlew

- 1990
- ▲ 2004
- ▭ Survey Area

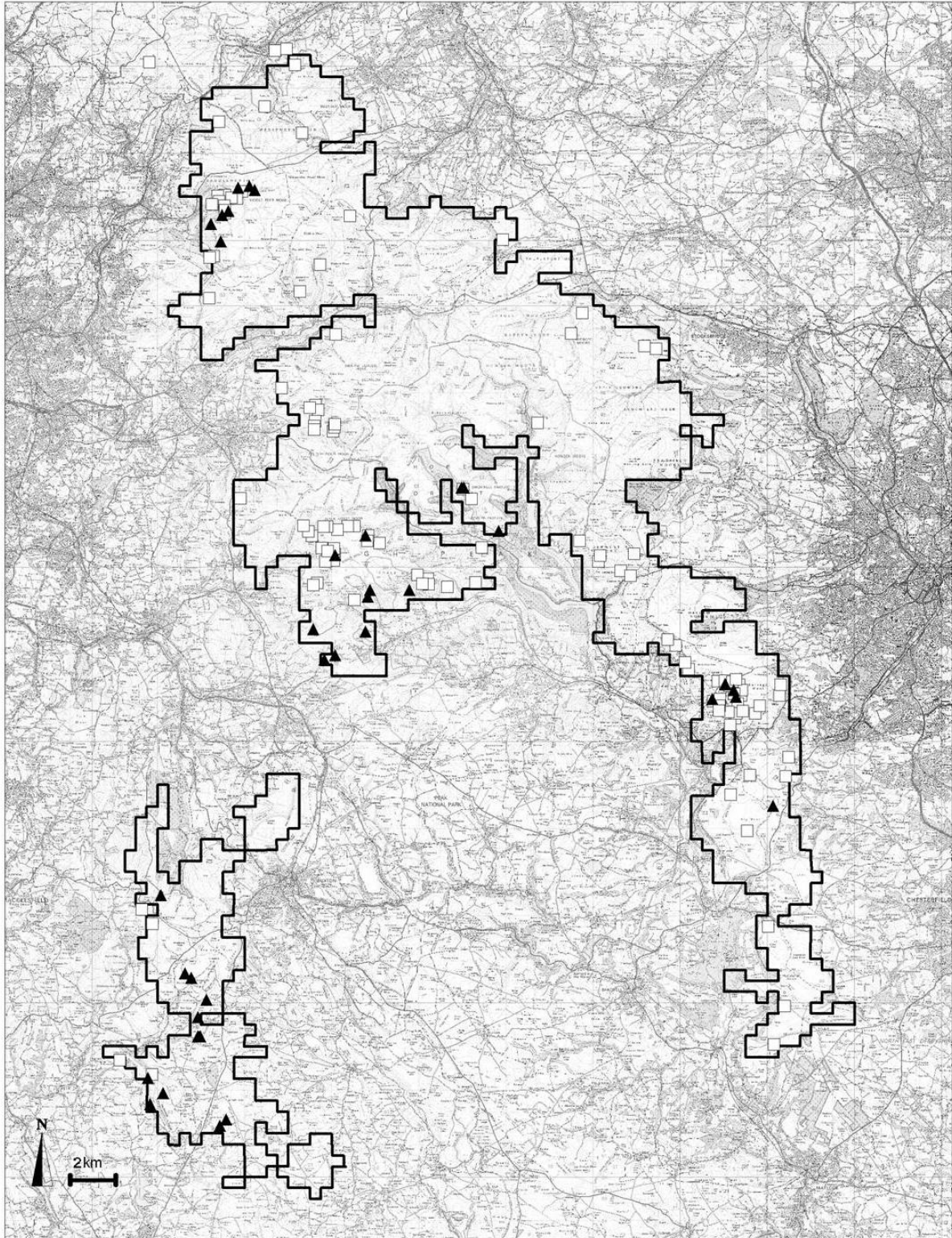


2004 Peak District Moorland Breeding Bird Survey

This map is reproduced from Ordnance Survey material with the permission of Controller of HMSO Crown Copyright. All rights reserved. Peak District National Park Authority.

Map 25
Distribution change 1990 - 2004 Short eared owl

- 2004
- 1990
- 2 Number present in tetrad (tetrad split for multiple years)



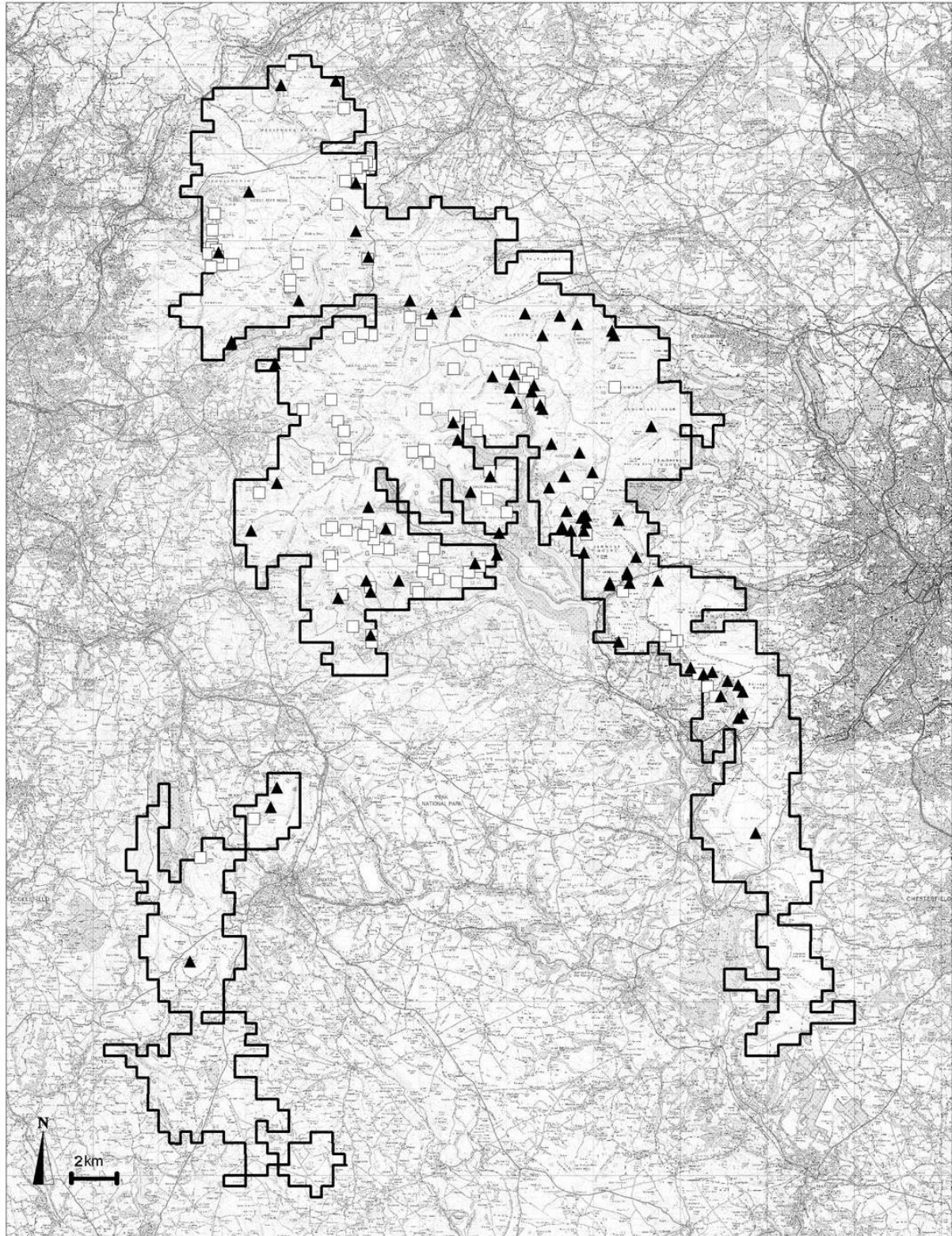
**2004 Peak District Moorland
Breeding Bird Survey**

This map is reproduced from Ordnance Survey material with the permission of Controller of HMSO. Crown Copyright. All rights reserved. Peak District National Park Authority.

Map 26

Distribution change 1990 - 2004 Wheatear

- ▲ 1990 breeding pair
- 2004 breeding pair
- ▭ Survey Area



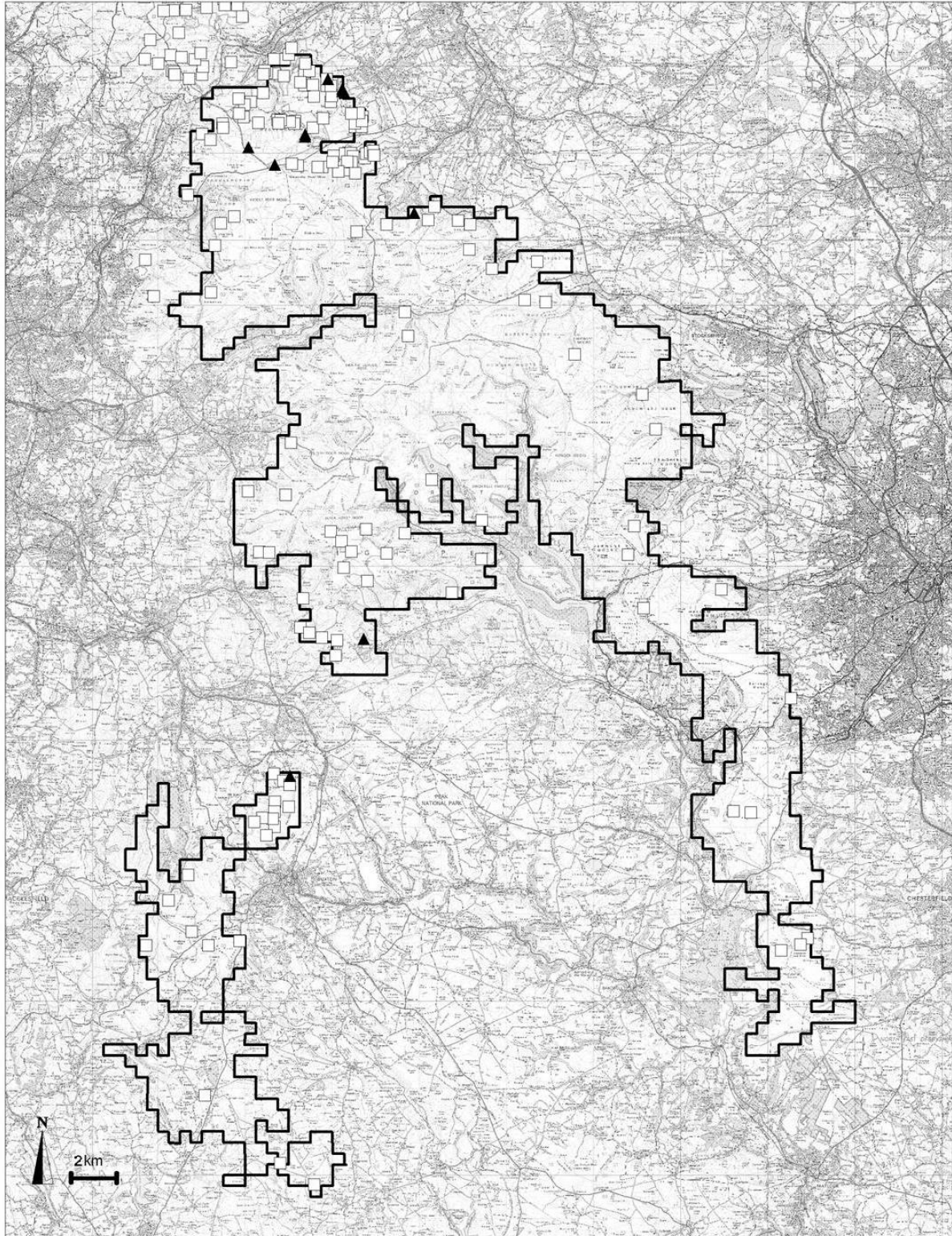
**2004 Peak District Moorland
Breeding Bird Survey**

This map is reproduced from Ordnance Survey material with the permission of Controller of HMSO. Crown Copyright. All rights reserved.
Peak District National Park Authority.

Map 27

Distribution change 1990 -2004 Ring Ouzel

- 1990 breeding pair
- ▲ 2004 breeding pair
- ▭ Survey Area



**2004 Peak District Moorland
Breeding Bird Survey**

This map is reproduced from Ordnance Survey material with the permission of Controller of HMSO. Crown Copyright. All rights reserved. Peak District National Park Authority.

Map 28

Distribution change 1990 -2004 Twite

- 1990 breeding pair
- ▲ 2004 breeding pair

▭ Survey Area