
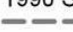


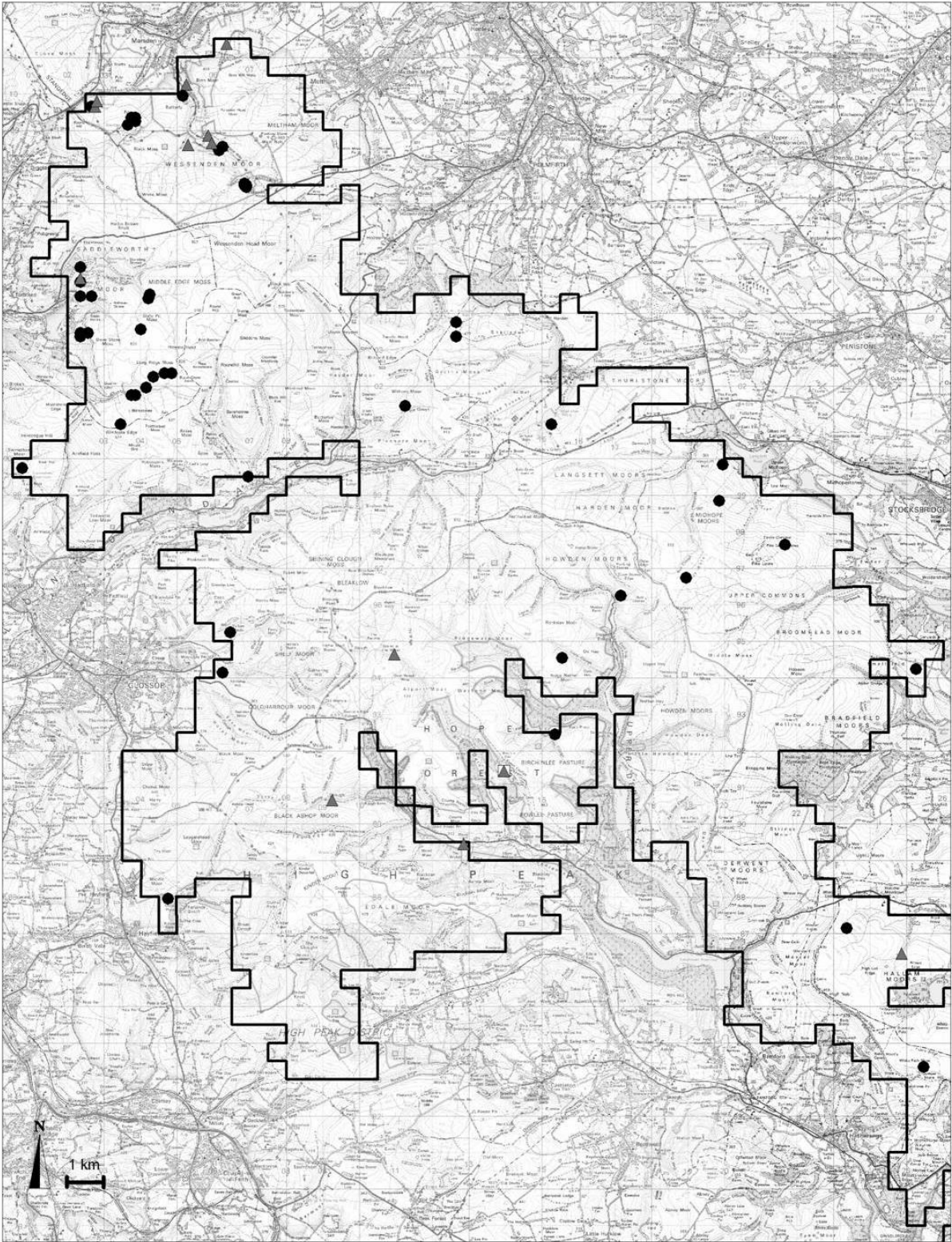
**2004 Peak District Moorland Breeding Bird Survey**

This map is reproduced from Ordnance Survey material with the permission of Controller of HMSO. Crown Copyright. All rights reserved. Peak District National Park Authority.

**Map 1. Survey Areas**

2004 Survey Area  


1990 Survey Area  




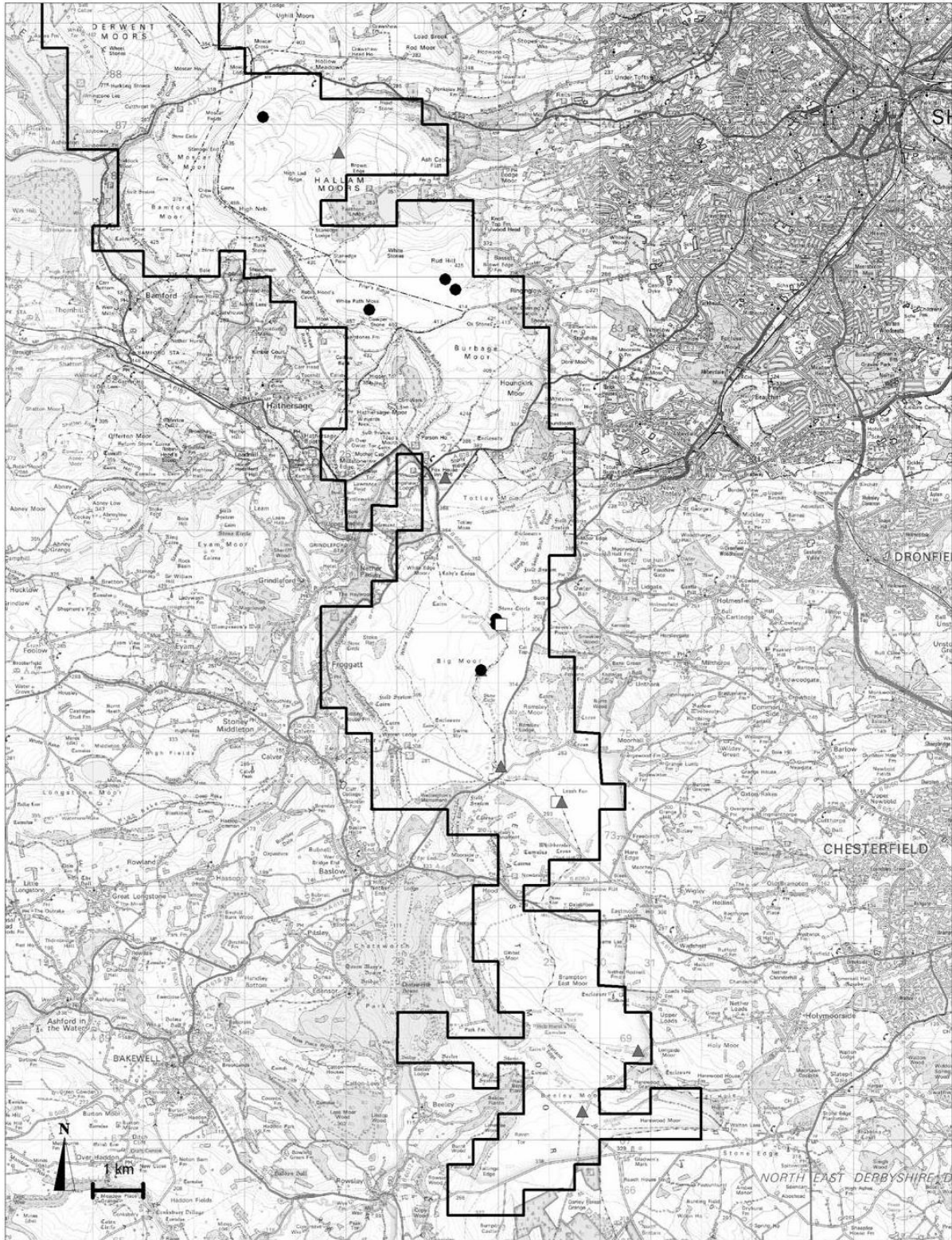
**2004 Peak District Moorland Breeding Bird Survey**

This map is reproduced from Ordnance Survey material with the permission of Controller of HMSO. Crown Copyright. All rights reserved. Peak District National Park Authority.

**Map 2a: Dark Peak**  
2004 Distribution of breeding pairs of

- Canada Goose
- ▲ Mallard
- Teal

▭ Survey Area



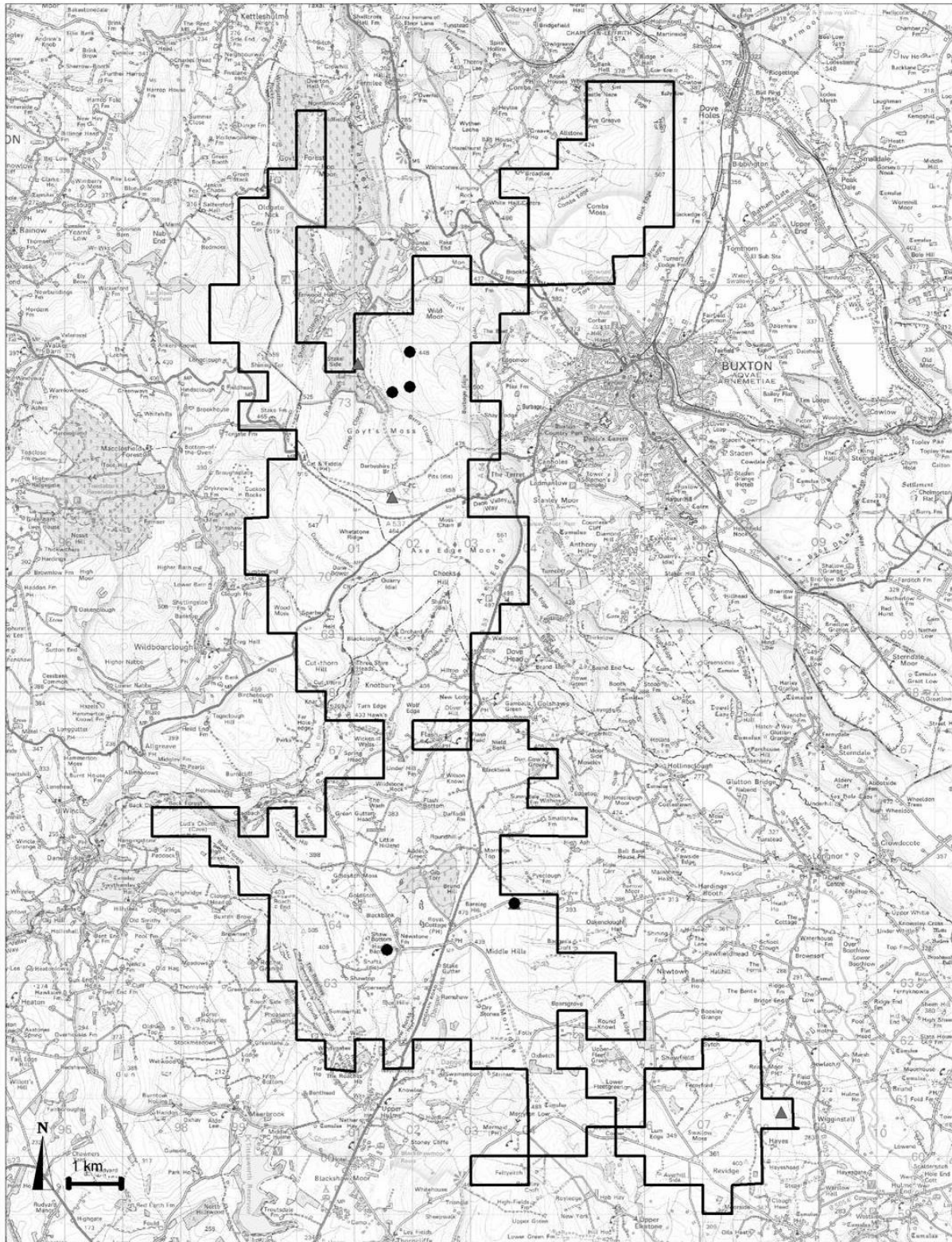
**2004 Peak District Moorland Breeding Bird Survey**

This map is reproduced from Ordnance Survey material with the permission of Controller of HMSO. Crown Copyright. All rights reserved. Peak District National Park Authority.

**Map 2b: Eastern Moors**  
2004 Distribution of breeding pairs of

- Canada Goose
- ▲ Mallard
- Teal

▭ Survey Area

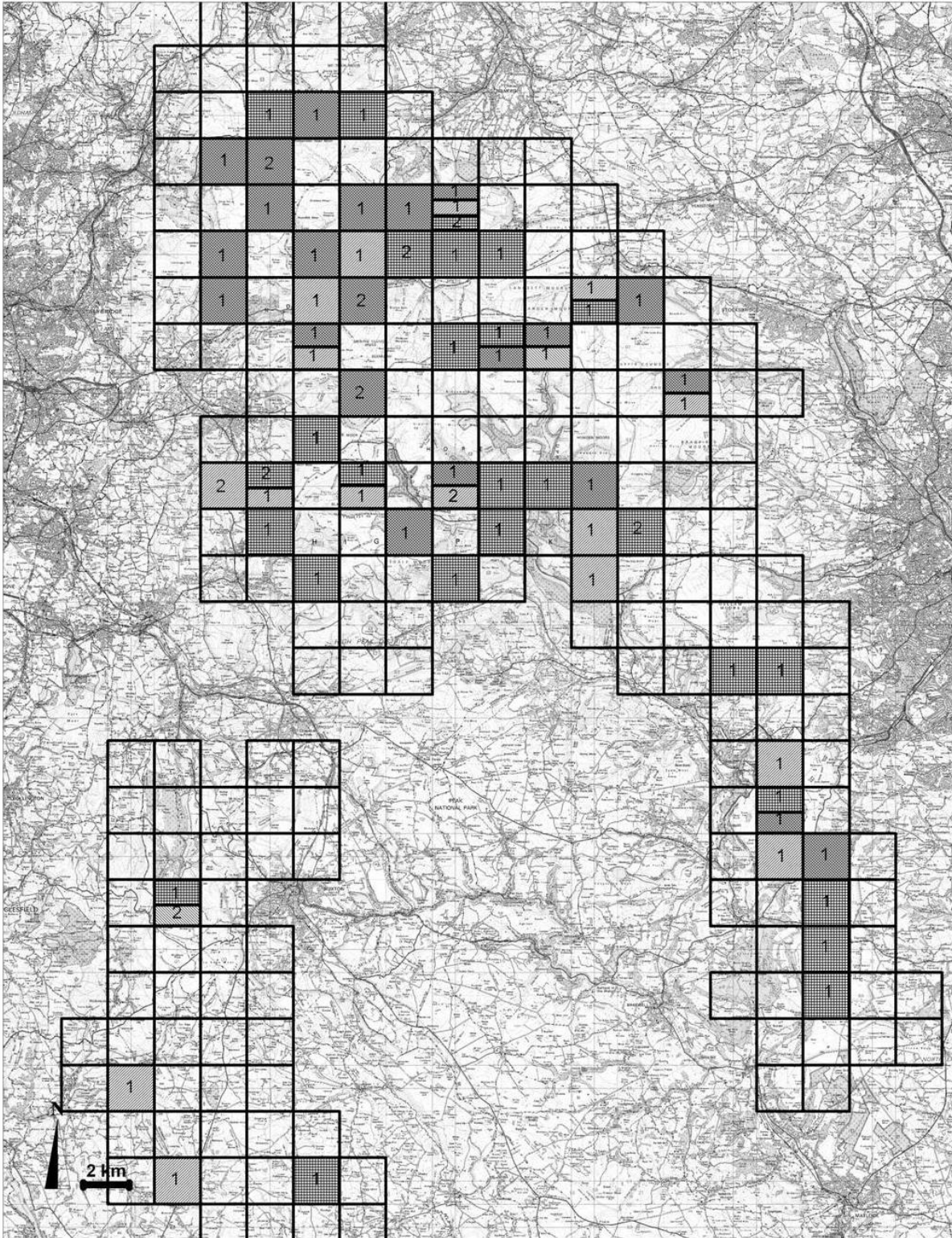


**2004 Peak District Moorland  
Breeding Bird Survey**

This map is reproduced from Ordnance Survey material with the permission of Controller of HMSO. Crown Copyright. All rights reserved. Peak District National Park Authority.

**Map 2c: SW Peak**  
2004 Distribution of Canada Goose, Mallard and Teal

- Canada Goose
- ▲ Mallard
- Teal
- Survey Area



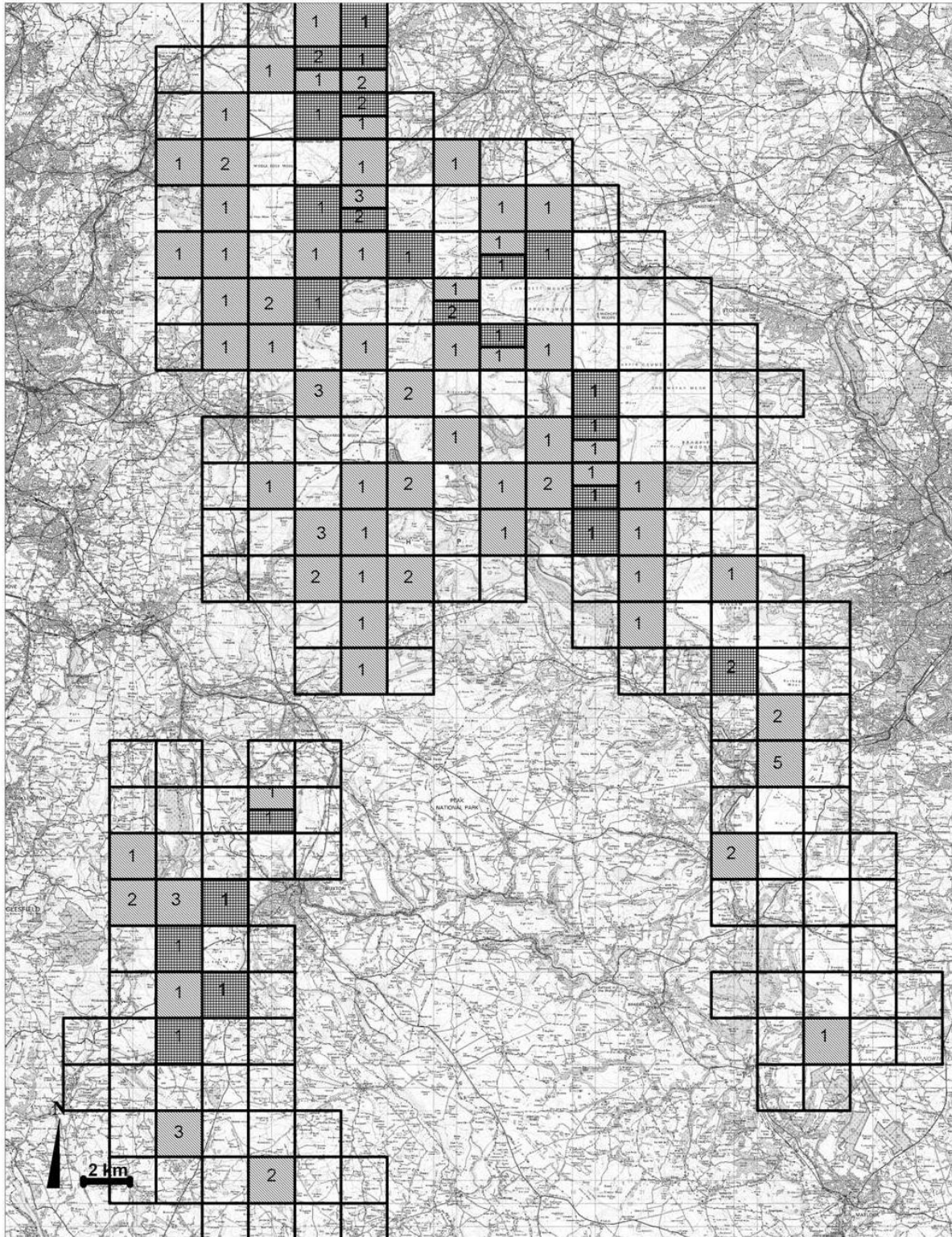
**2004 Peak District Moorland Breeding Bird Survey**

This map is reproduced from Ordnance Survey material with the permission of Controller of HMSO Crown Copyright. All rights reserved. Peak District National Park Authority.

**Map 3a:**  
2004 Distribution of raptors and owls

- None
- Buzzard
- Hen Harrier
- Merlin
- Peregrine

**2** Number present in tetrad (tetrad split for multiple species)



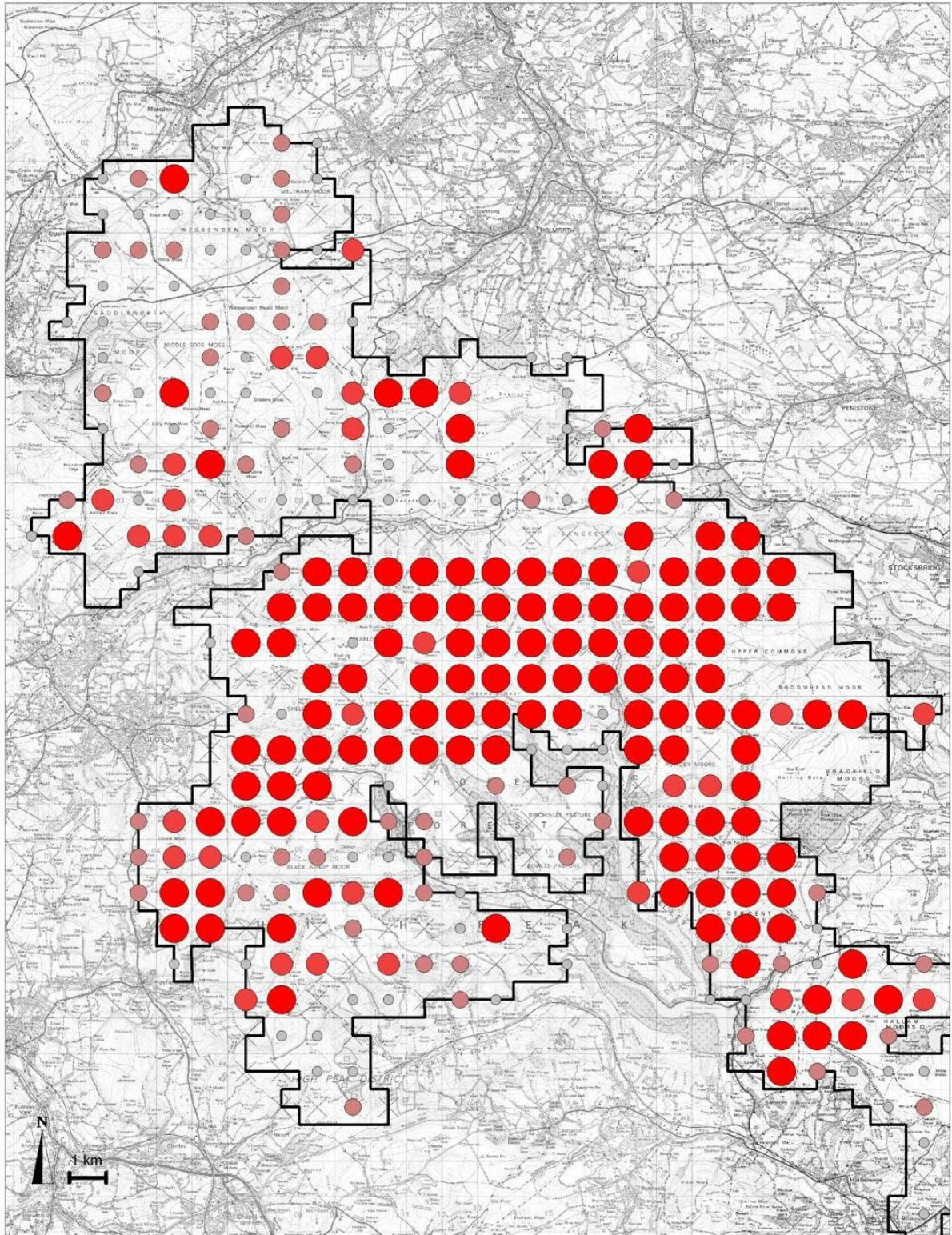
### 2004 Peak District Moorland Breeding Bird Survey

This map is reproduced from Ordnance Survey material with the permission of Controller of HMSO Crown Copyright. All rights reserved. Peak District National Park Authority.

**Map 3b:**  
2004 Distribution of raptors and owls

- None
- Kestrel
- Short-eared Owl

**2** Number present in tetrad (tetrad split for multiple species)



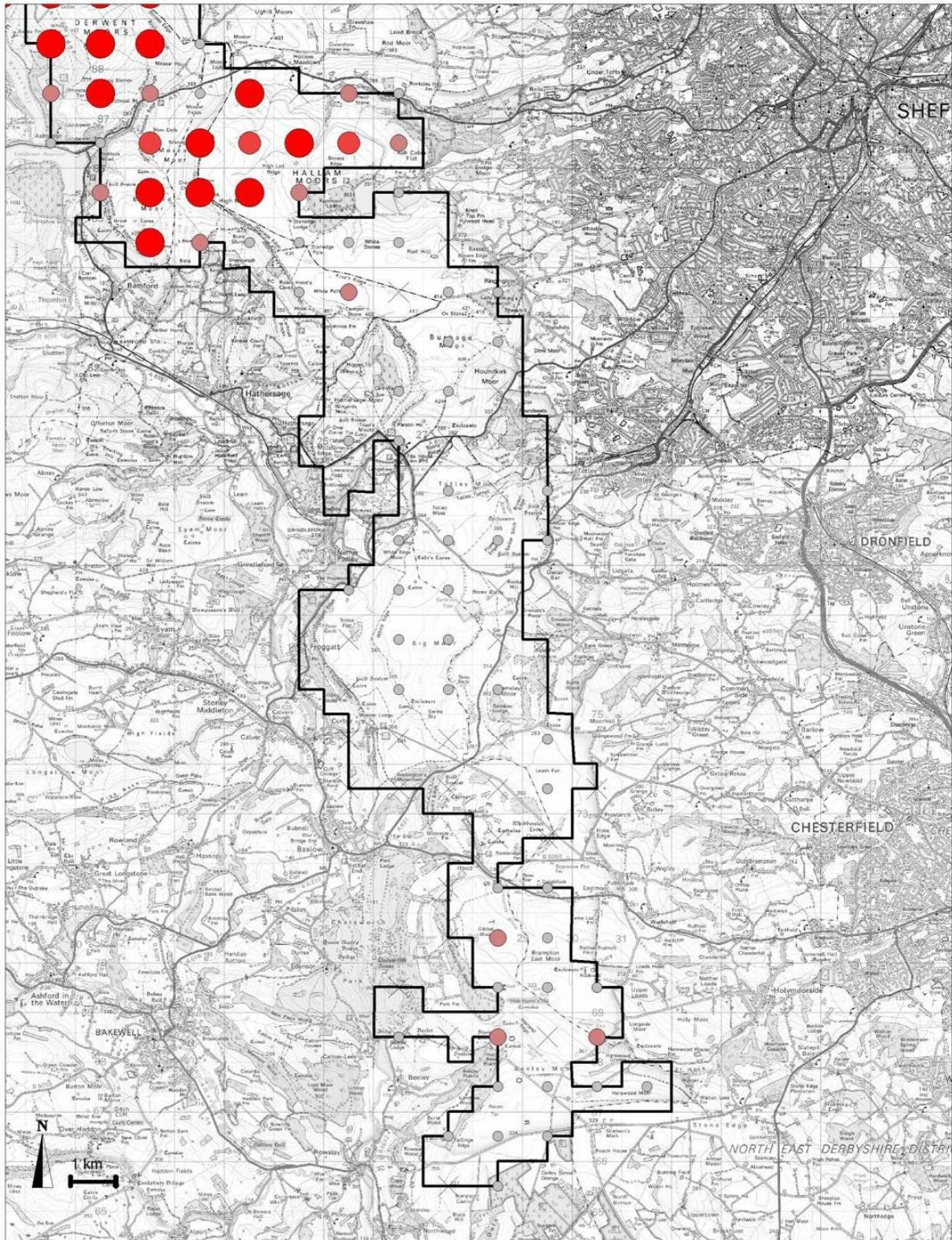
**2004 Peak District Moorland Breeding Bird Survey**

This map is reproduced from Ordnance Survey material with the permission of Controller of HMSO. Crown Copyright. All rights reserved. Peak District National Park Authority.

**Map 4a: Dark Peak**  
2004 Distribution of Red Grouse

- 1 to 5
- 6 to 10
- 11 to 15
- 16 to 99
- × no count

▭ Survey Area



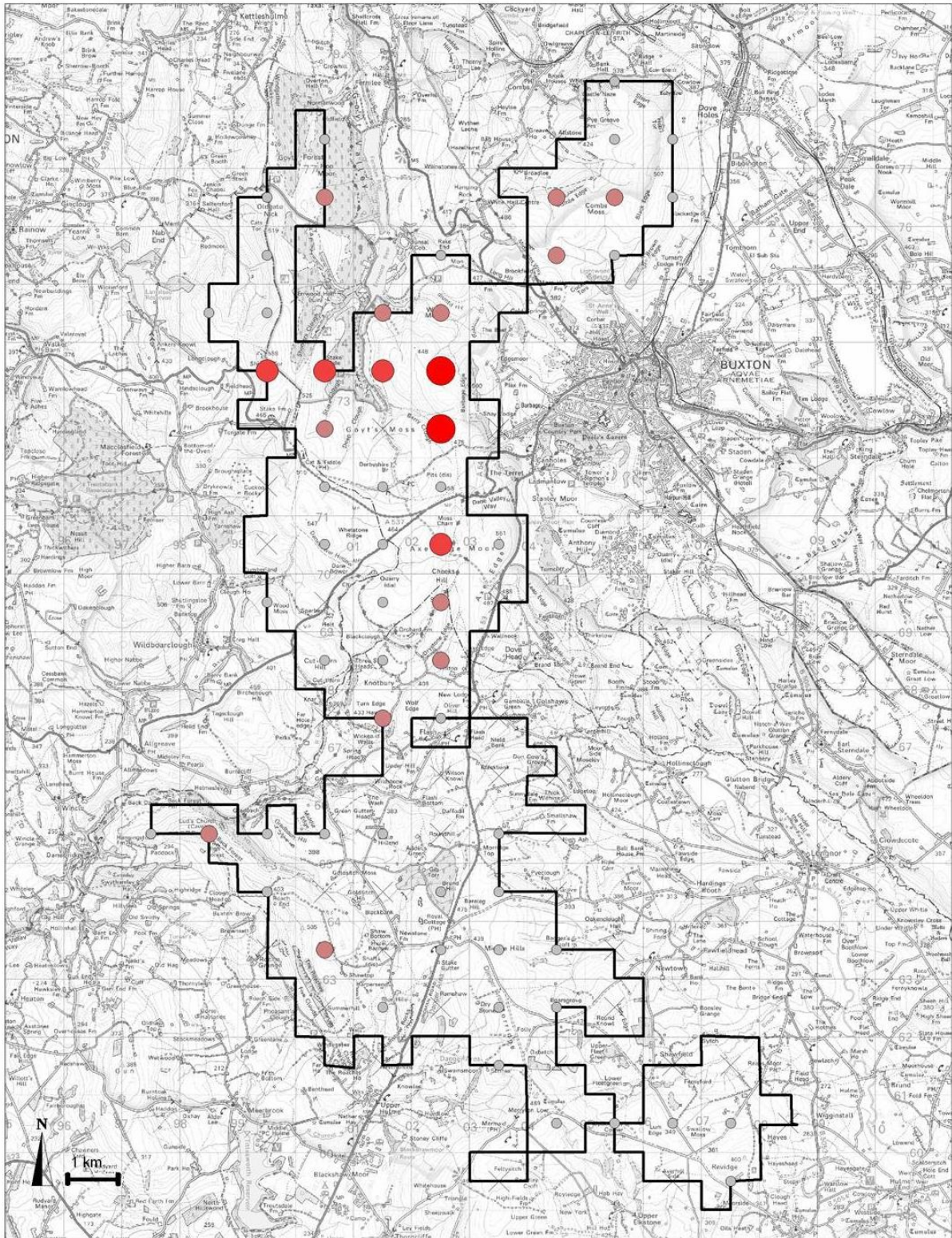
**2004 Peak District Moorland Breeding Bird Survey**

This map is reproduced from Ordnance Survey material with the permission of Controller of HMSO. Crown Copyright. All rights reserved. Peak District National Park Authority.

**Map 4b: Eastern Moors**  
2004 Distribution of Red Grouse

- 1 to 5
- 6 to 10
- 11 to 15
- 16 to 99
- ⊗ no count
- ▭ Survey Area



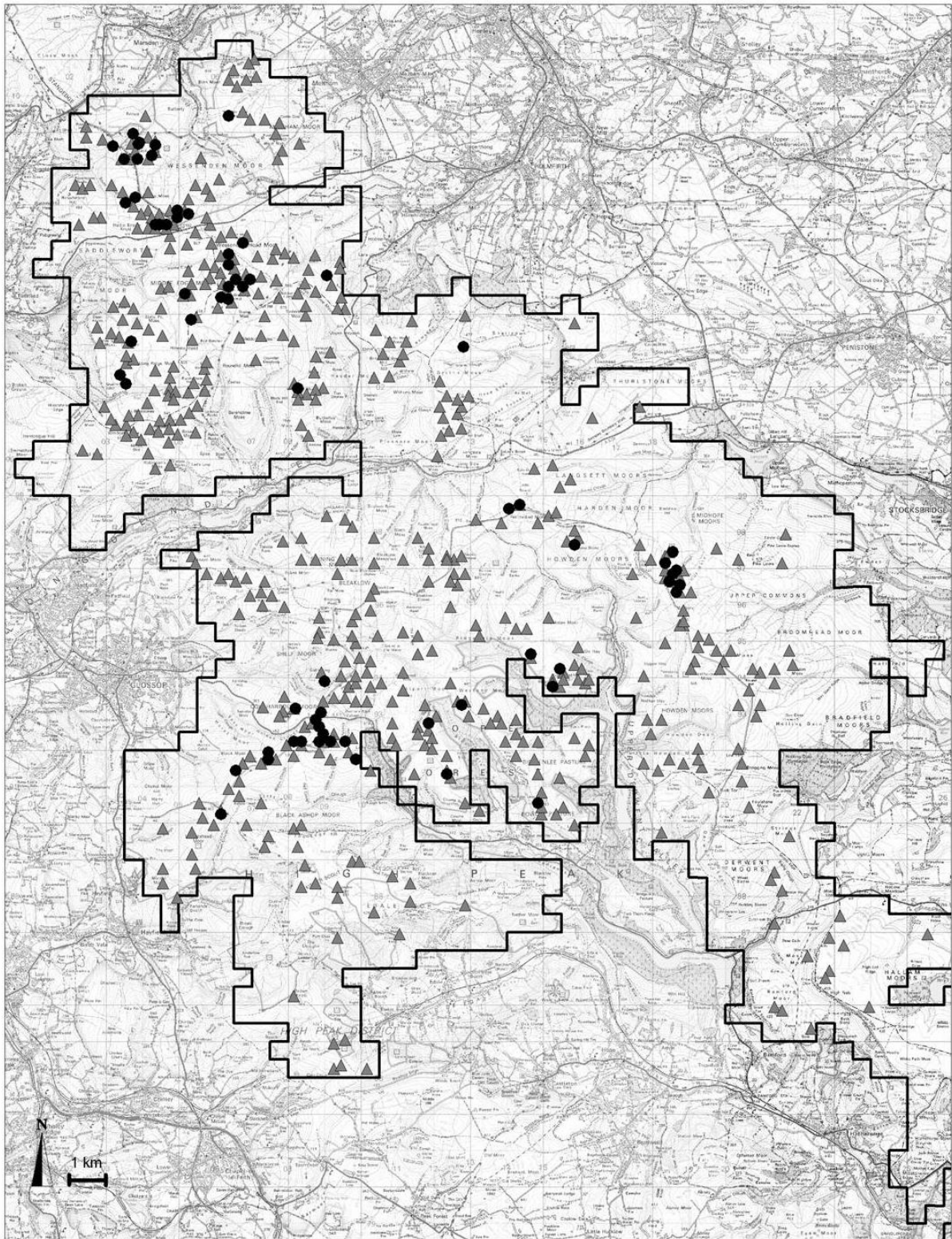


**2004 Peak District Moorland Breeding Bird Survey**

This map is reproduced from Ordnance Survey material with the permission of Controller of HMSO. Crown Copyright. All rights reserved. Peak District National Park Authority.

**Map 4c: SW Peak**  
2004 Distribution of Red Grouse

- 1 to 5
- 6 to 10
- 11 to 15
- 16 to 99
- ⊗ no count
- ▭ Survey Area



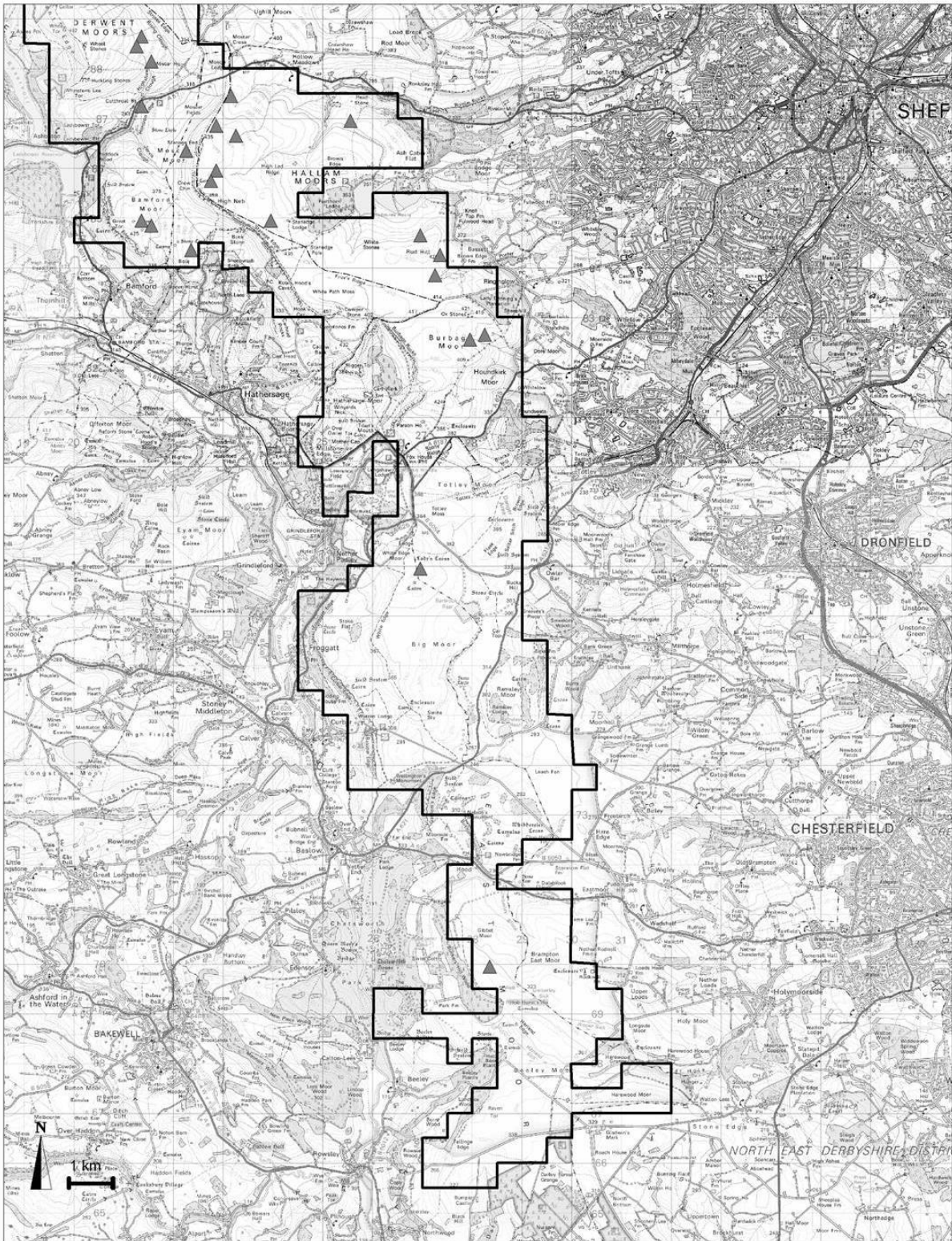
**2004 Peak District Moorland Breeding Bird Survey**

This map is reproduced from Ordnance Survey material with the permission of Controller of HMSO. Crown Copyright. All rights reserved. Peak District National Park Authority.

**Map 5a: Dark Peak**

2004 distribution of breeding pairs of

- Dunlin
- ▲ Golden Plover
- ▭ Survey Area

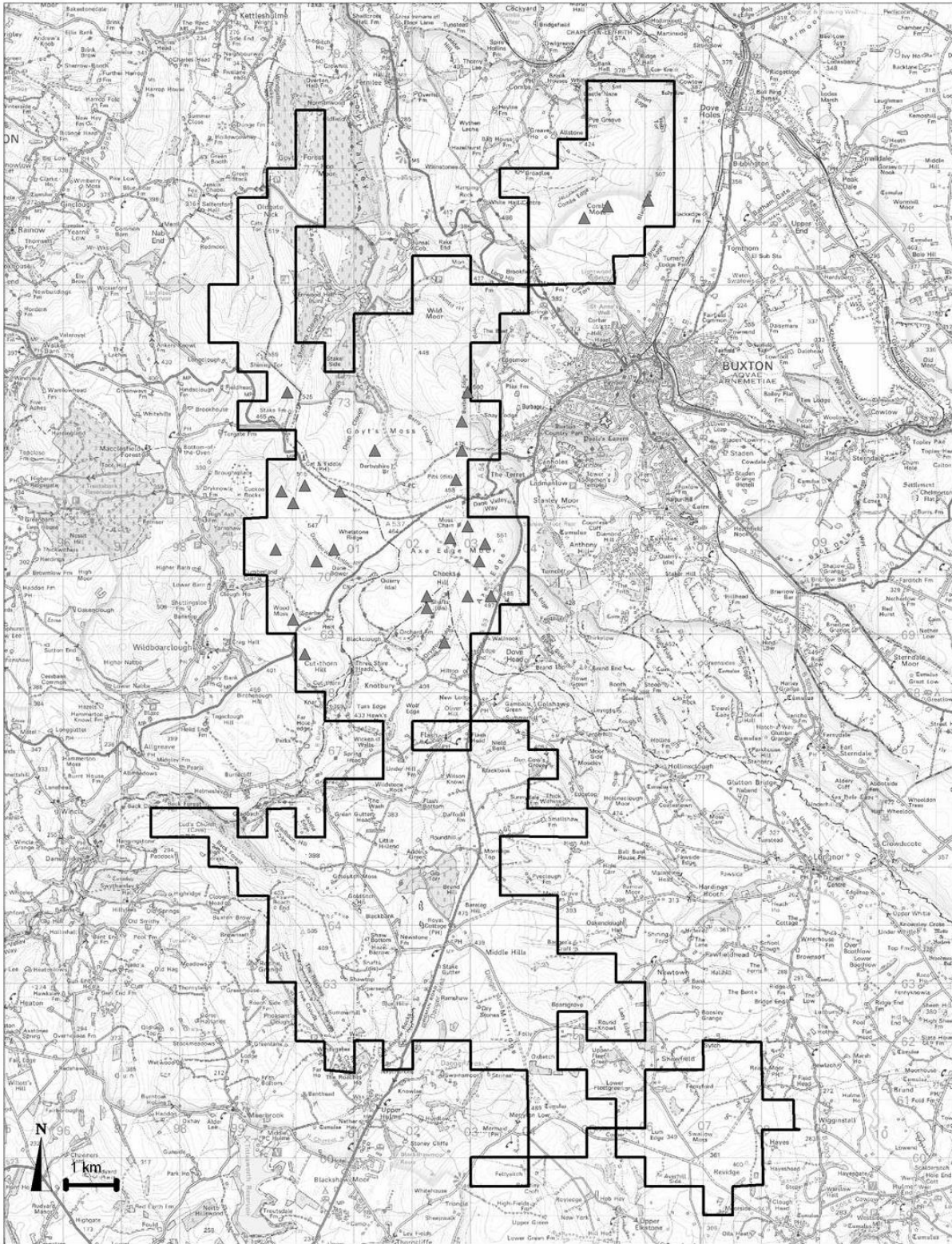


**2004 Peak District Moorland Breeding Bird Survey**

This map is reproduced from Ordnance Survey material with the permission of Controller of HMSO. Crown Copyright. All rights reserved. Peak District National Park Authority.

**Map 5b: Eastern Moors**  
2004 Distribution of breeding pairs of

- Dunlin
- ▲ Golden Plover
- ▭ Survey Area



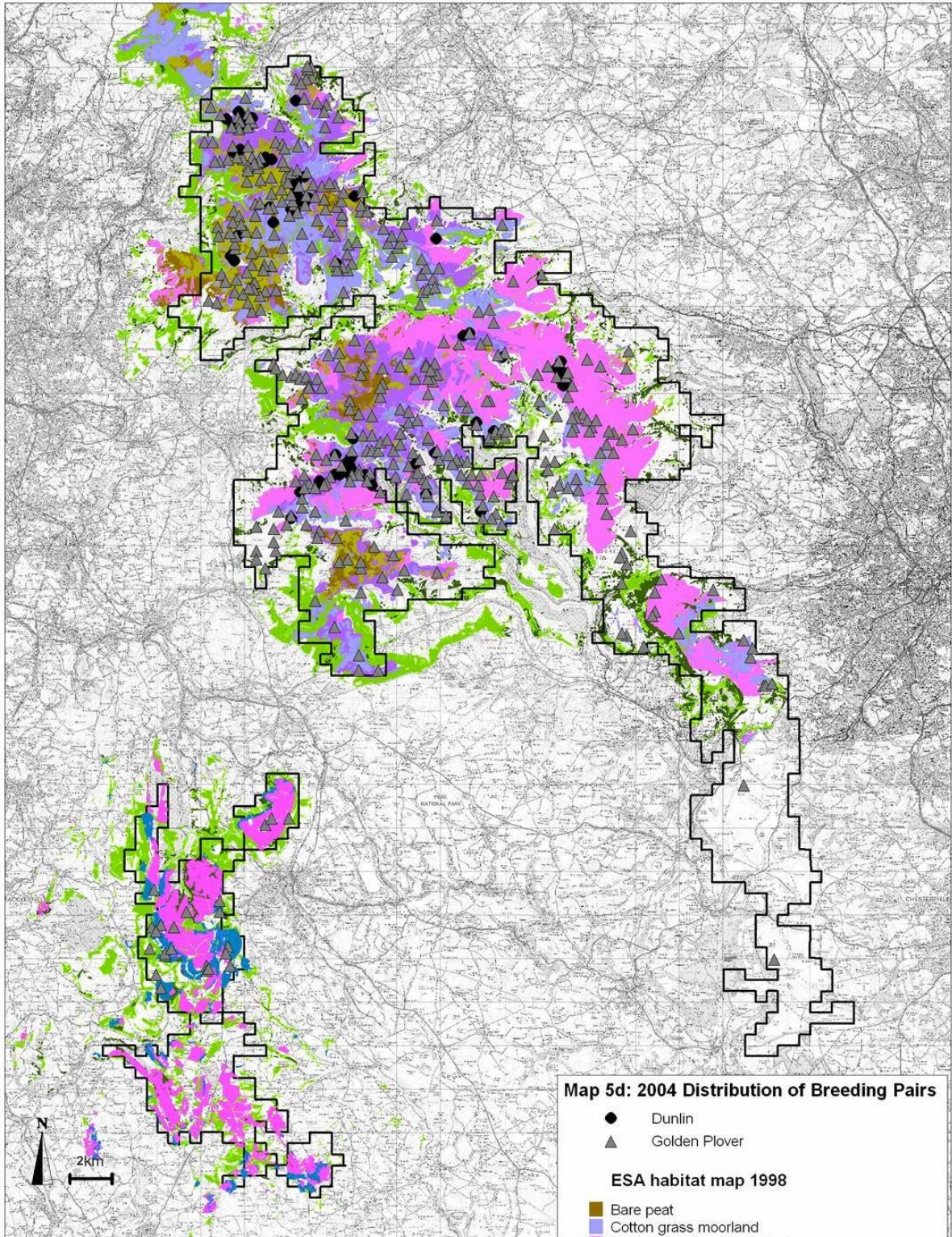
**2004 Peak District Moorland  
Breeding Bird Survey**

This map is reproduced from Ordnance Survey material with the permission of Controller of HMSO. Crown Copyright. All rights reserved.  
Peak District National Park Authority.

**Map 5c: SW Peak**

2004 Distribution of breeding pairs of

- Dunlin
- ▲ Golden Plover
- ▭ Survey Area



**Map 5d: 2004 Distribution of Breeding Pairs**

- Dunlin
- ▲ Golden Plover

**ESA habitat map 1998**

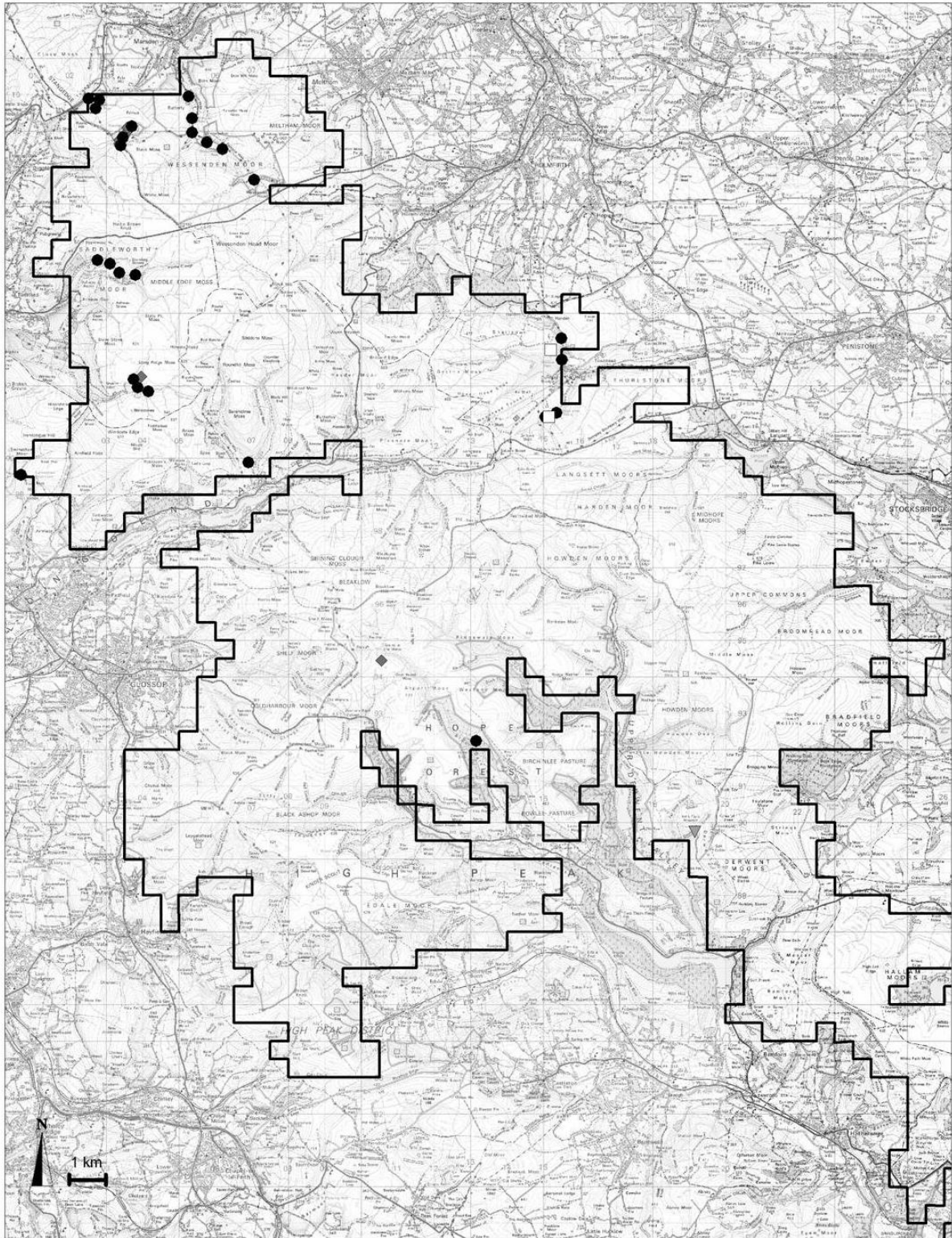
- Bare peat
- Cotton grass moorland
- Dry bog heather dominated
- Dry bog non-heather dominant
- Eroding moorland
- Continuous bracken
- Unimproved acid grassland
- Bilberry/crowberry moorland (SW Peak)

□ survey area



**2004 Peak District Moorland Breeding Bird Survey**

This map is reproduced from Ordnance Survey material with the permission of Controller of HMSO. Crown Copyright. All rights reserved. Peak District National Park Authority.



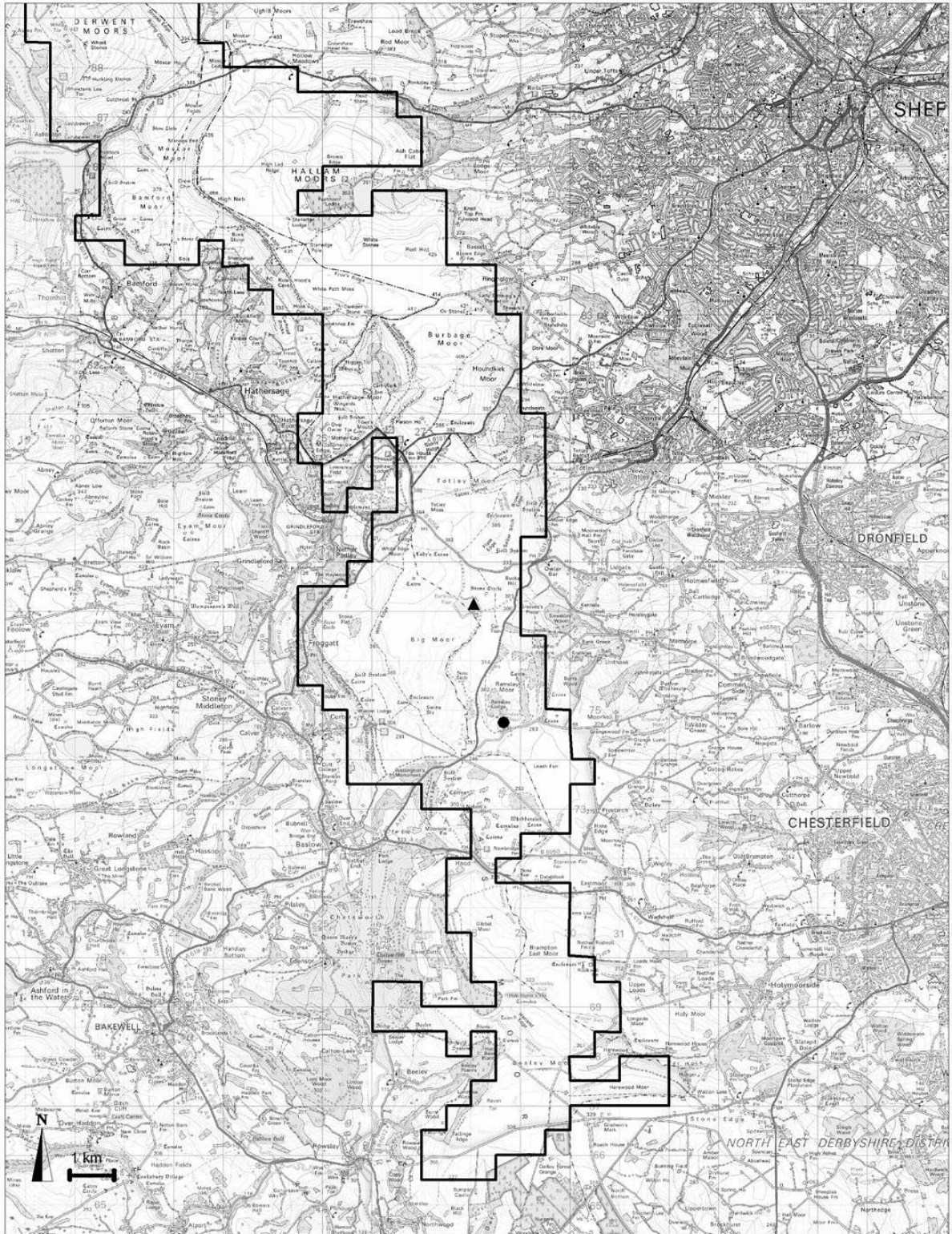
**2004 Peak District Moorland Breeding Bird Survey**

This map is reproduced from Ordnance Survey material with the permission of Controller of HMSO. Crown Copyright. All rights reserved. Peak District National Park Authority.

**Map 6a: Dark Peak**  
Distribution of breeding pairs of

- Common Sandpiper
- ▲ Little Ringed Plover
- Oystercatcher
- ◆ Redshank
- ▼ Woodcock

▭ Survey Area



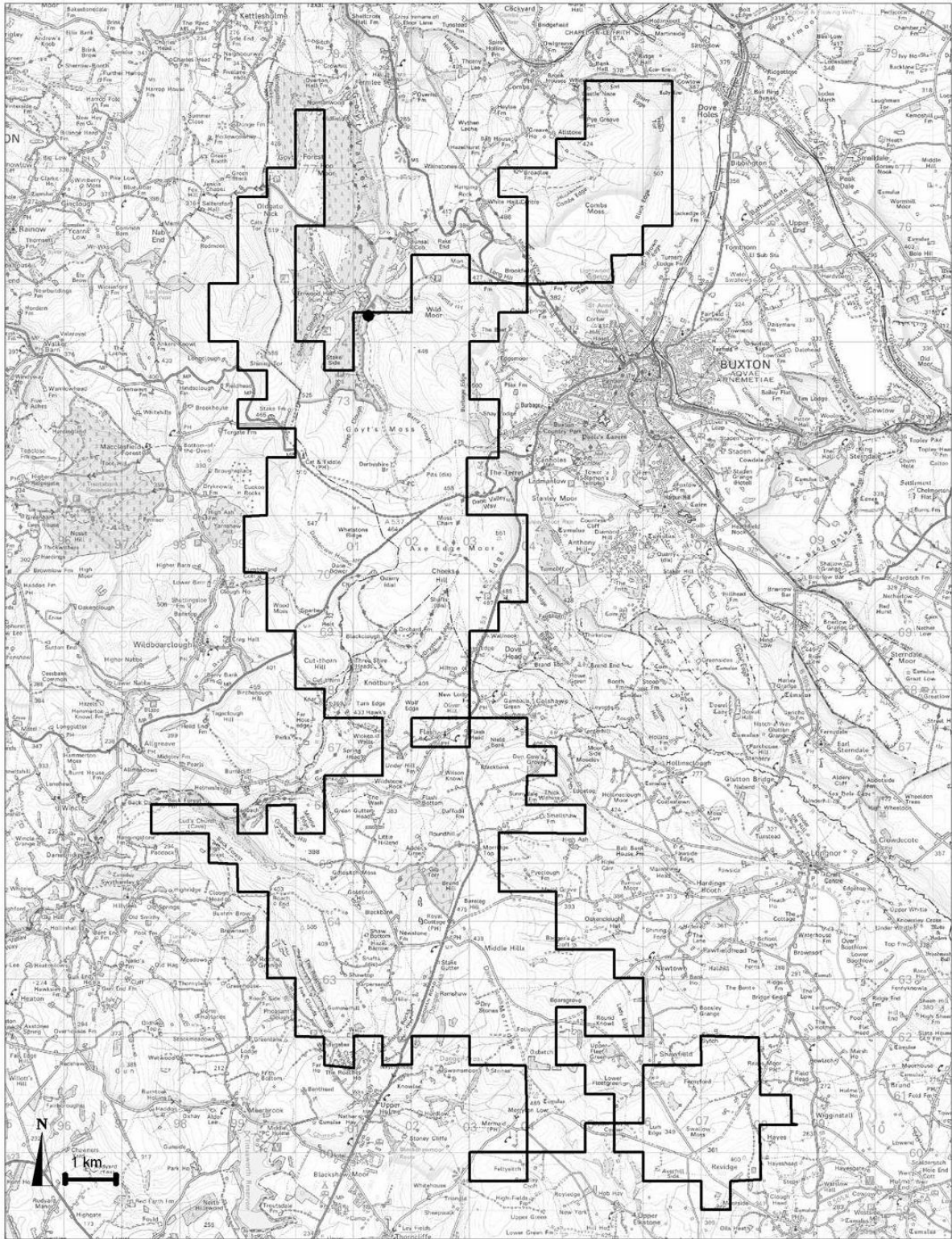
**2004 Peak District Moorland Breeding Bird Survey**

This map is reproduced from Ordnance Survey material with the permission of Controller of HMSO. Crown Copyright. All rights reserved. Peak District National Park Authority.

**Map 6b: Eastern Moors**  
2004 Distribution of breeding pairs of

- Common Sandpiper
- ▲ Little Ringed Plover
- Oystercatcher
- ◆ Redshank
- ▼ Woodcock

▭ Survey Area



**2004 Peak District Moorland  
Breeding Bird Survey**

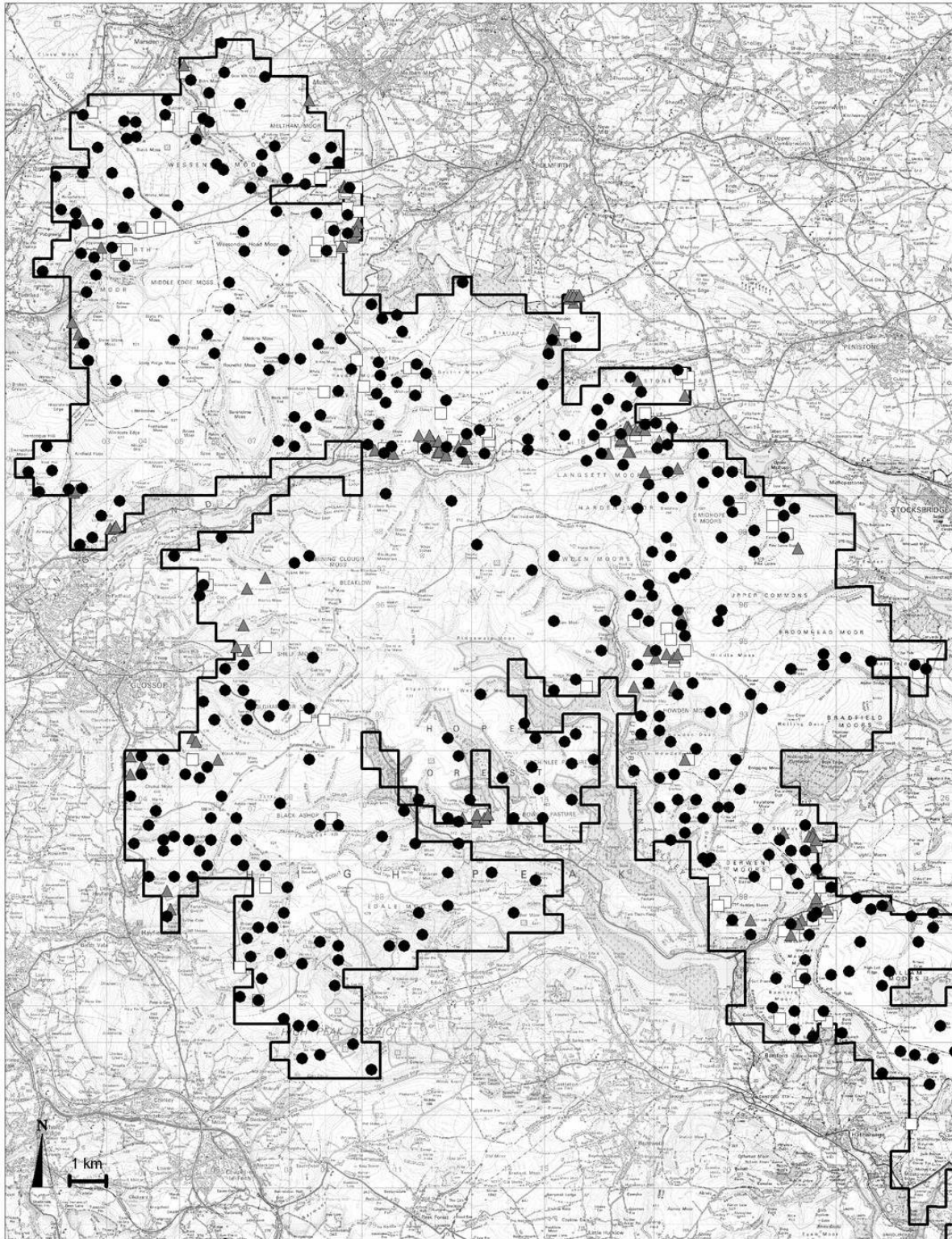
This map is reproduced from Ordnance Survey material with the permission of Controller of HMSO. Crown Copyright. All rights reserved.  
Peak District National Park Authority.

**Map 6c: SW Peak**  
2004 Distribution of breeding pairs of

- Common Sandpiper
- ▲ Little Ringed Plover
- Oystercatcher
- ◆ Redshank
- ▼ Woodcock

▭ Survey Area



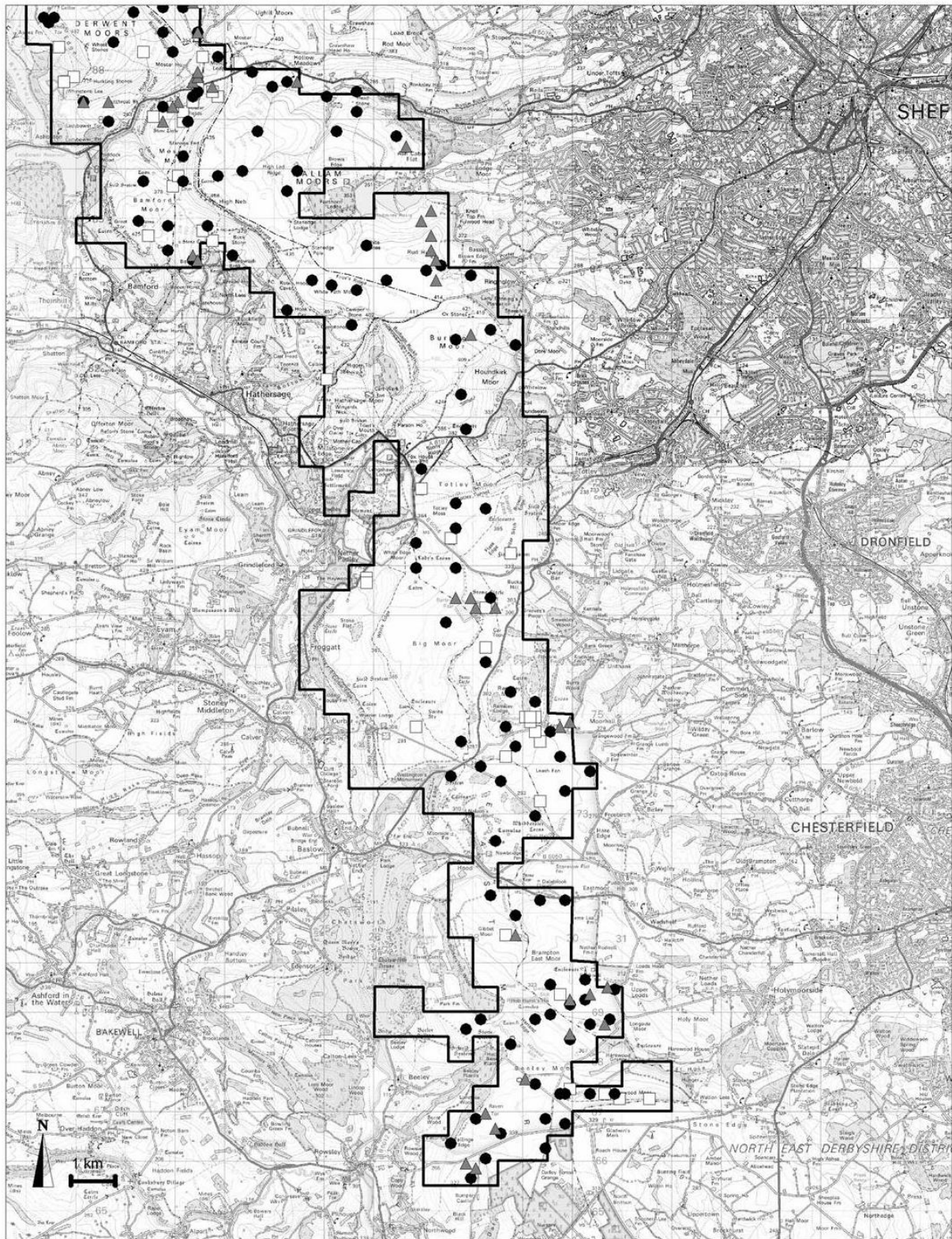


**2004 Peak District Moorland Breeding Bird Survey**

This map is reproduced from Ordnance Survey material with the permission of Controller of HMSO. Crown Copyright. All rights reserved. Peak District National Park Authority.

**Map 7a: Dark Peak**  
2004 Distribution of breeding pairs of

- Curlew
- ▲ Lapwing
- Snipe
- ▭ Survey Area



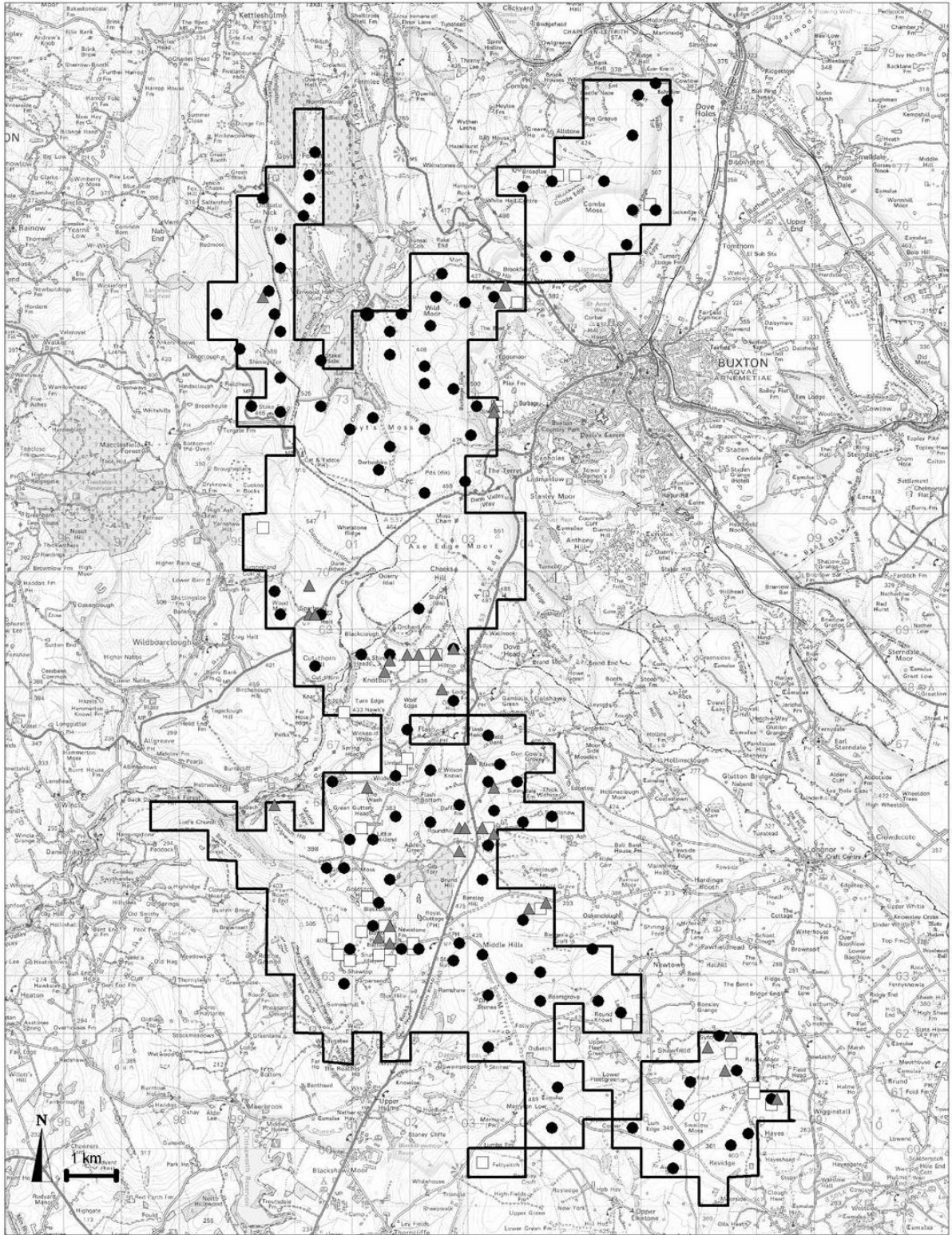
**2004 Peak District Moorland Breeding Bird Survey**

This map is reproduced from Ordnance Survey material with the permission of Controller of HMSO. Crown Copyright. All rights reserved. Peak District National Park Authority.

**Map 7b: Eastern Moors**

2004 Distribution of breeding pairs of

- Curlew
- ▲ Lapwing
- Snipe
- ▭ Survey Area

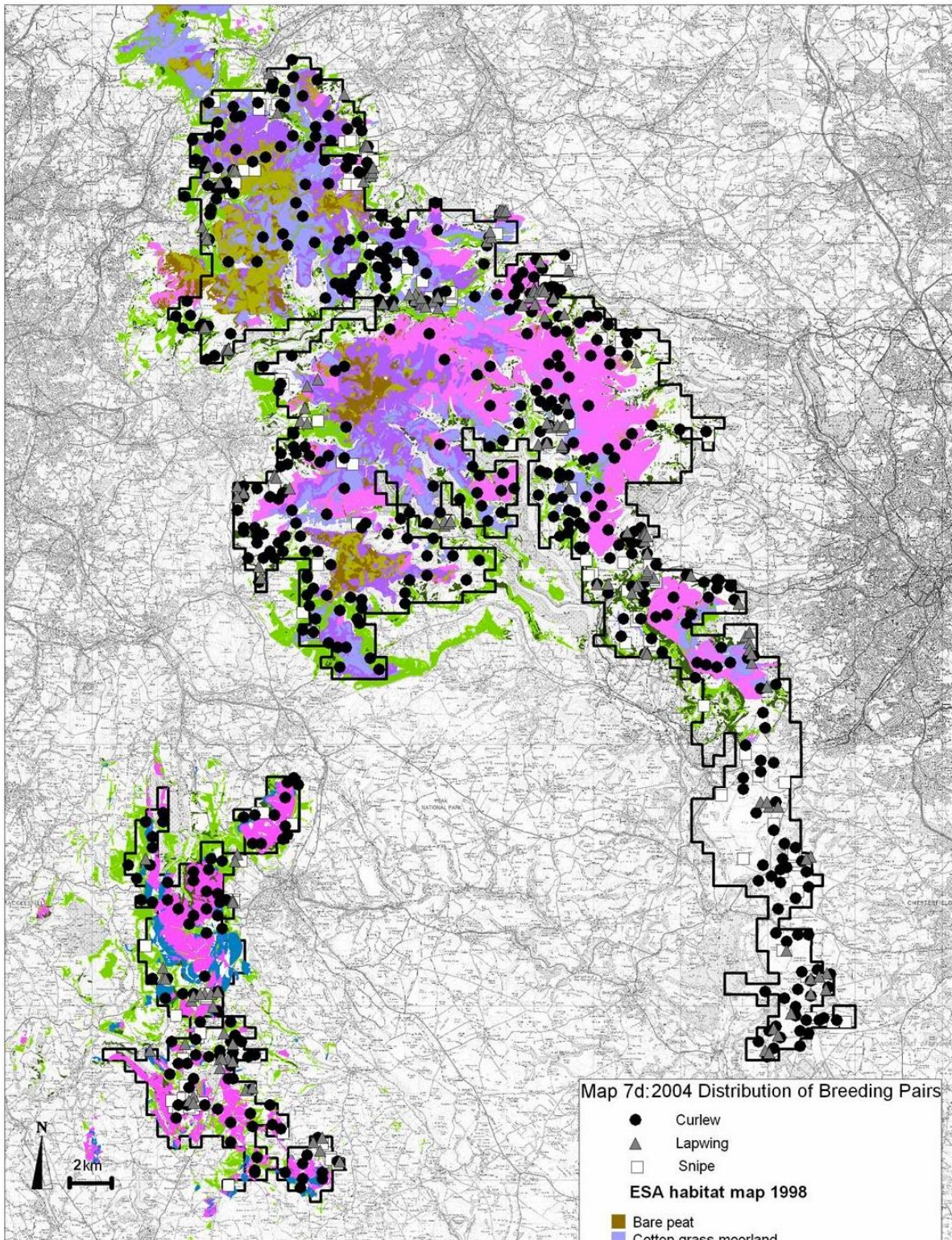


**2004 Peak District Moorland Breeding Bird Survey**

This map is reproduced from Ordnance Survey material with the permission of Controller of HMSO. Crown Copyright. All rights reserved. Peak District National Park Authority.

**Map 7c: SW Peak**  
 2004 Distribution of breeding pairs of

- Curlew
- ▲ Lapwing
- Snipe
- ▭ Survey Area



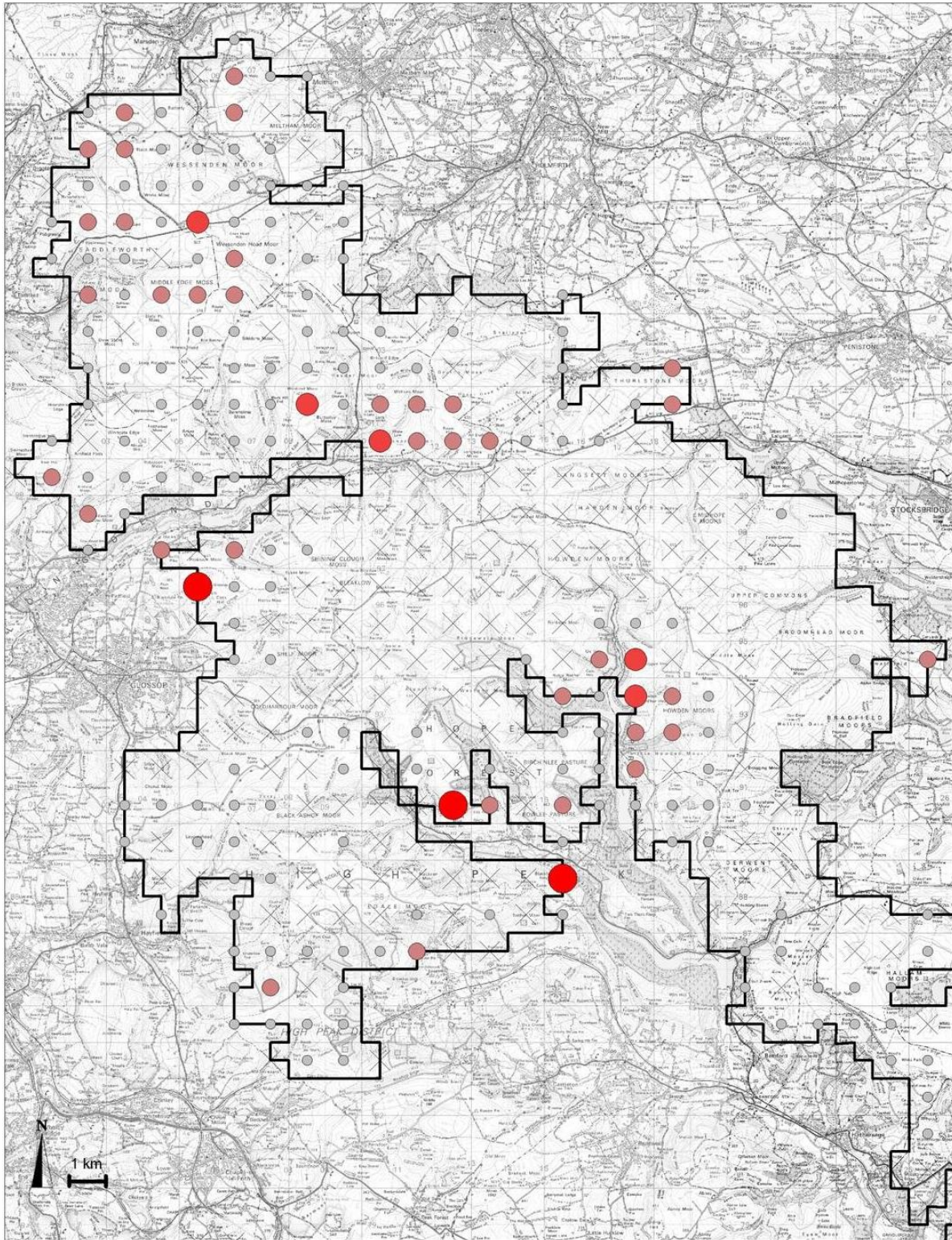
Map 7d: 2004 Distribution of Breeding Pairs

- Curlew
  - ▲ Lapwing
  - Snipe
- ESA habitat map 1998**
- Bare peat
  - Cotton grass moorland
  - Dry bog heather dominated
  - Dry bog non-heather dominant
  - Eroding moorland
  - Continuous bracken
  - Unimproved acid grassland
  - Bilberry/crowberry moorland (SW Peak)
- survey area



**2004 Peak District Moorland Breeding Bird Survey**

This map is reproduced from Ordnance Survey material with the permission of Controller of HMSO. Crown Copyright. All rights reserved. Peak District National Park Authority.

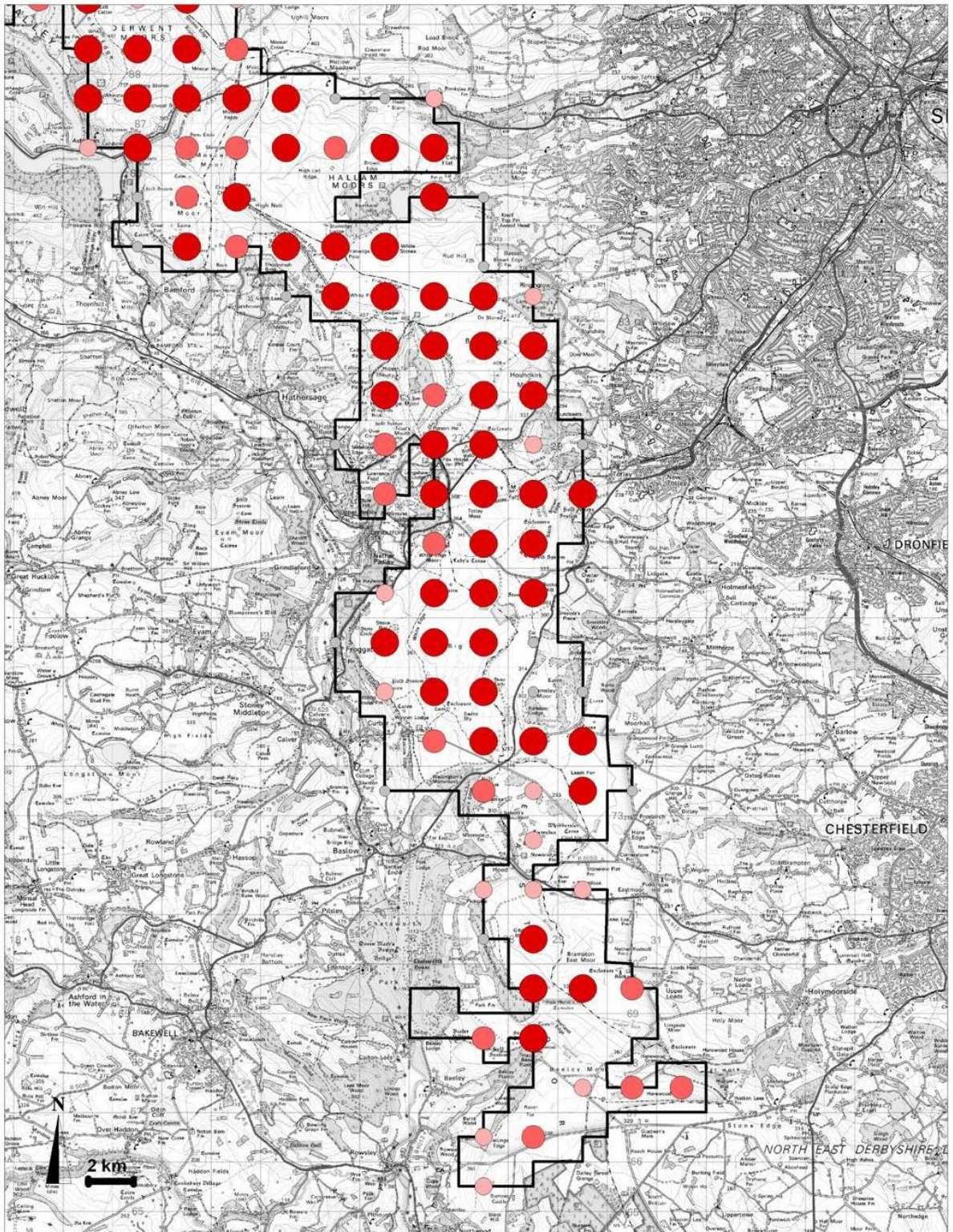


**2004 Peak District Moorland Breeding Bird Survey**

This map is reproduced from Ordnance Survey material with the permission of Controller of HMSO. Crown Copyright. All rights reserved. Peak District National Park Authority.

**Map 8a: Dark Peak**  
2004 Distribution of Skylark

- 1 to 5
- 6 to 10
- 11 to 15
- 16 to 99
- × no count
- ▭ Survey Area



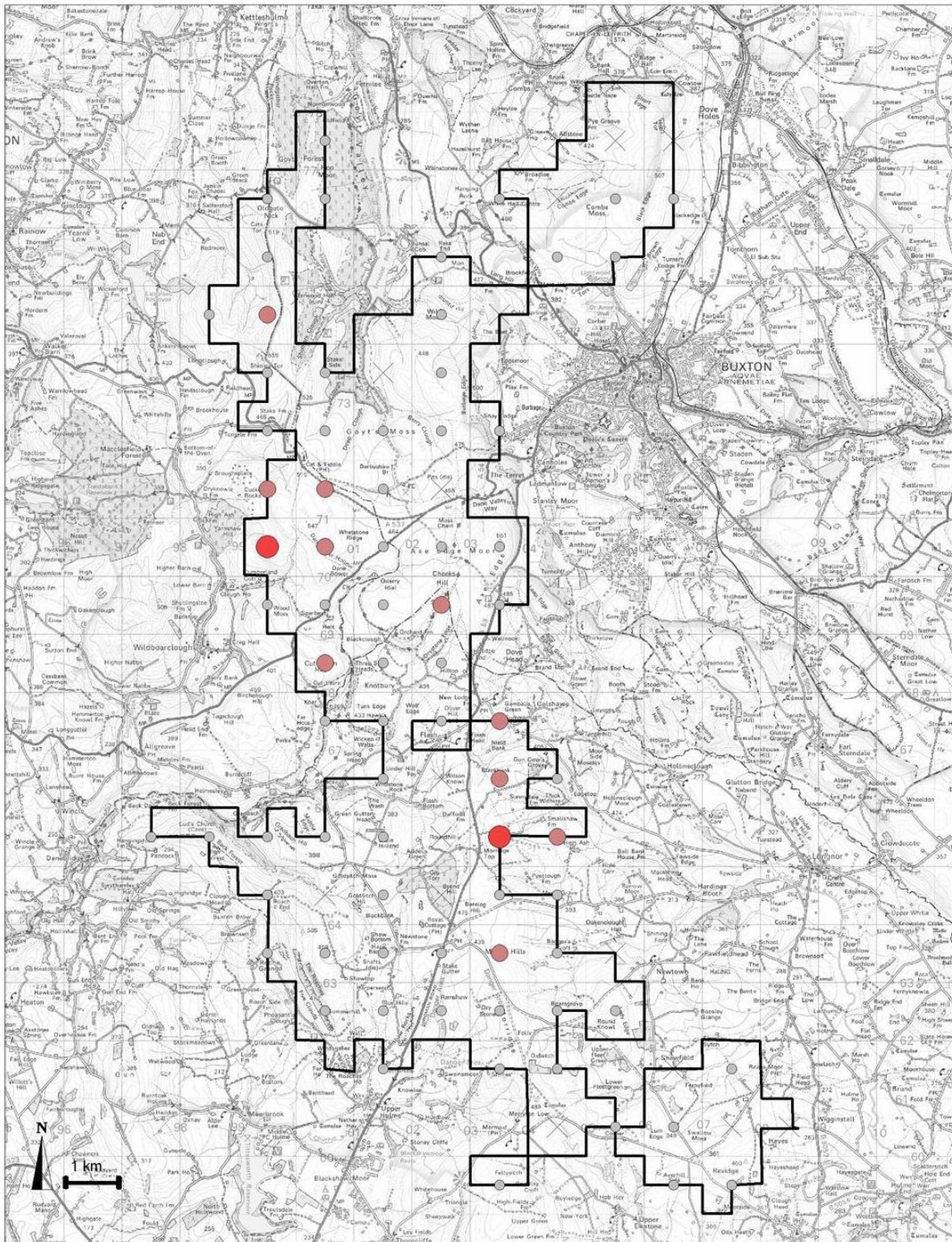
**2004 Peak District Moorland Breeding Bird Survey**

This map is reproduced from Ordnance Survey material with the permission of Controller of HMSO Crown Copyright. All rights reserved. Peak District National Park Authority.

**Map 8b: Eastern Moors**  
2004 Distribution of Skylark

- 1 to 5
- 6 to 10
- 11 to 15
- 16 to 99
- ⊗ all others

▭ Survey Area



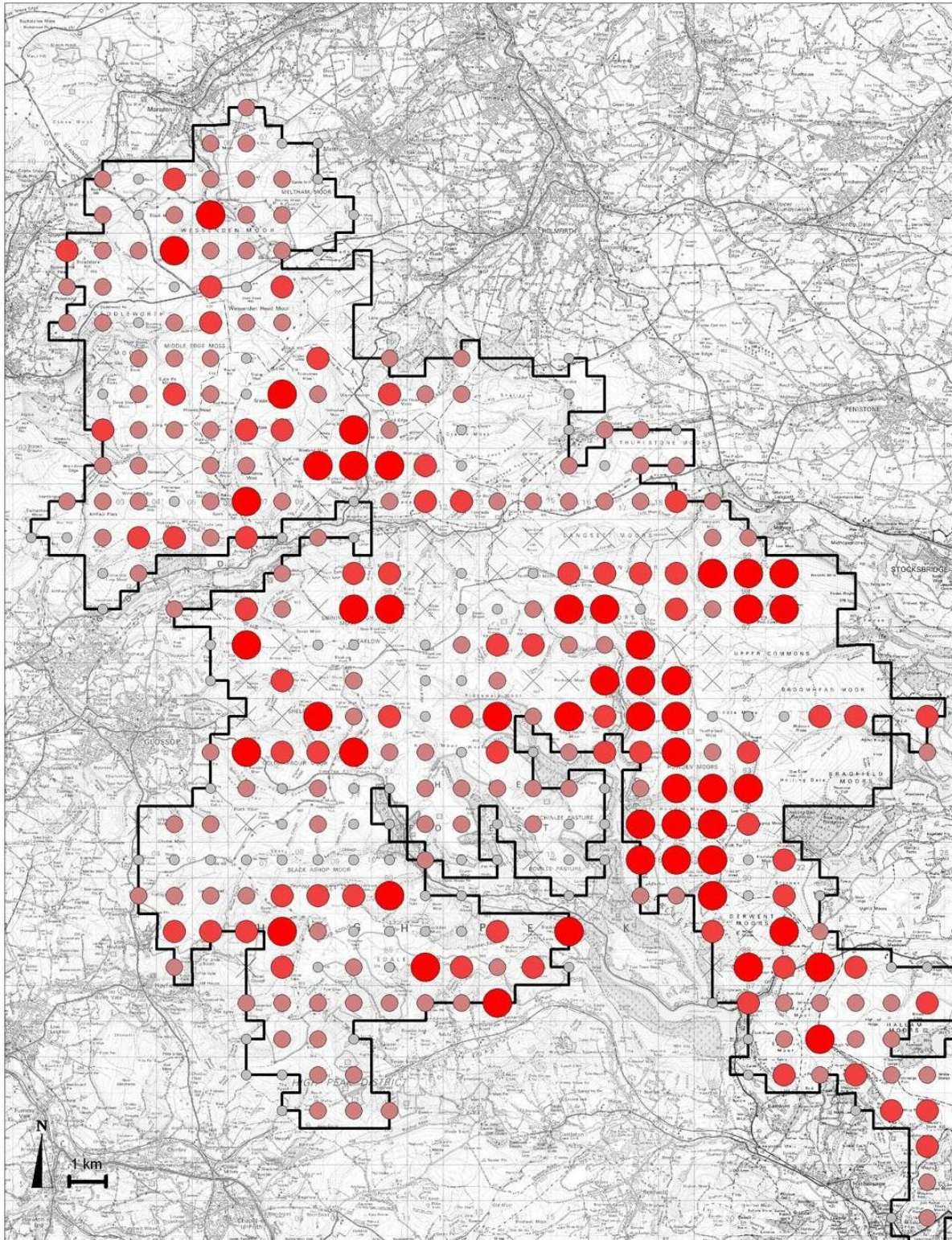
**2004 Peak District Moorland  
Breeding Bird Survey**

This map is reproduced from Ordnance Survey material with the permission of Controller of HMSO. Crown Copyright. All rights reserved.  
Peak District National Park Authority.

**Map 8c: SW Peak  
2004 Distribution of Skylark**

- 1 to 5
- 6 to 10
- 11 to 15
- 16 to 99
- × no count

Survey Area



**2004 Peak District Moorland Breeding Bird Survey**

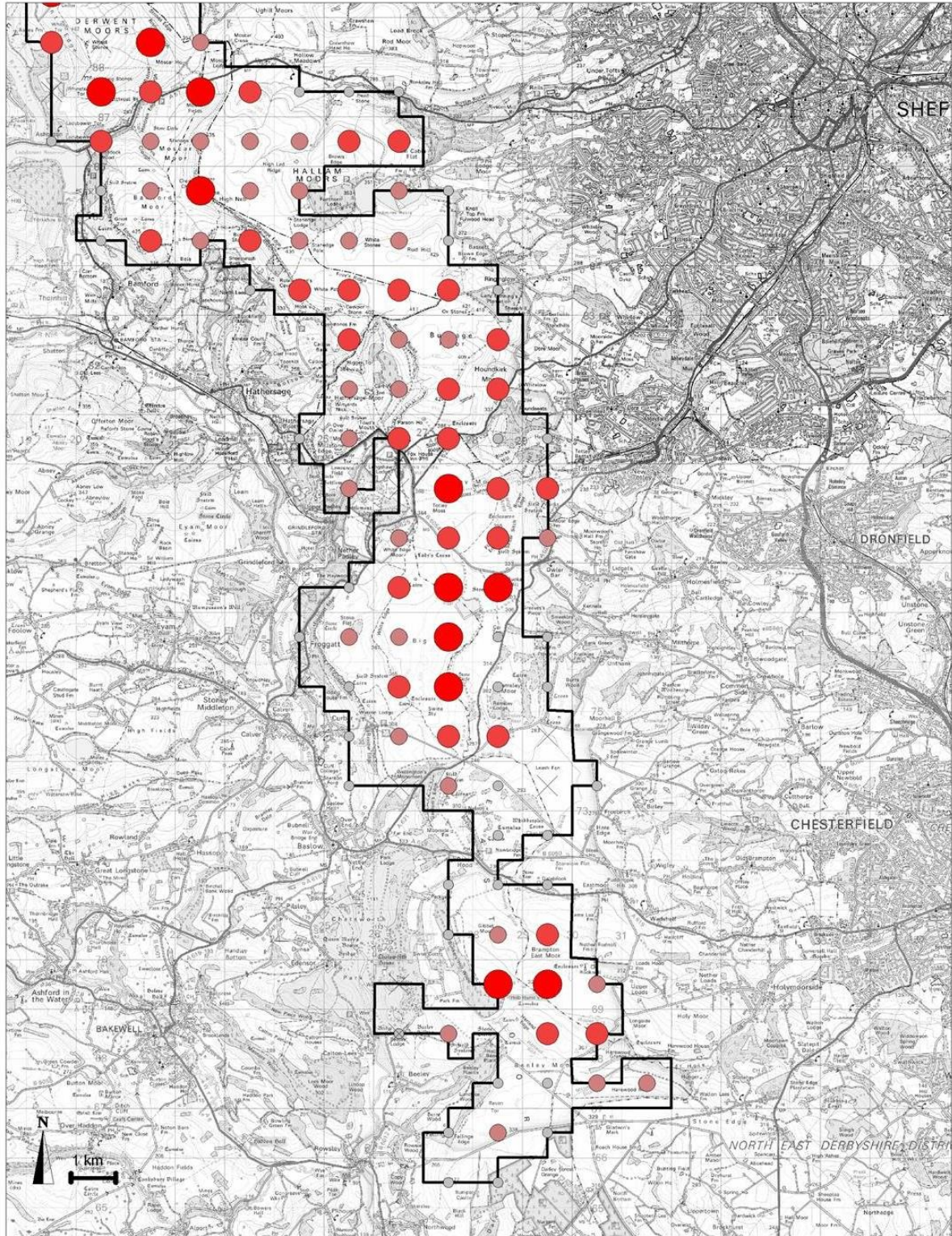
This map is reproduced from Ordnance Survey material with the permission of Controller of HMSO. Crown Copyright. All rights reserved. Peak District National Park Authority.

**Map 9a. Dark Peak**  
2004 Distribution of Meadow Pipit

- 1 to 10
- 11 to 20
- 21 to 30
- 30 to 79
- × no count

Survey Area





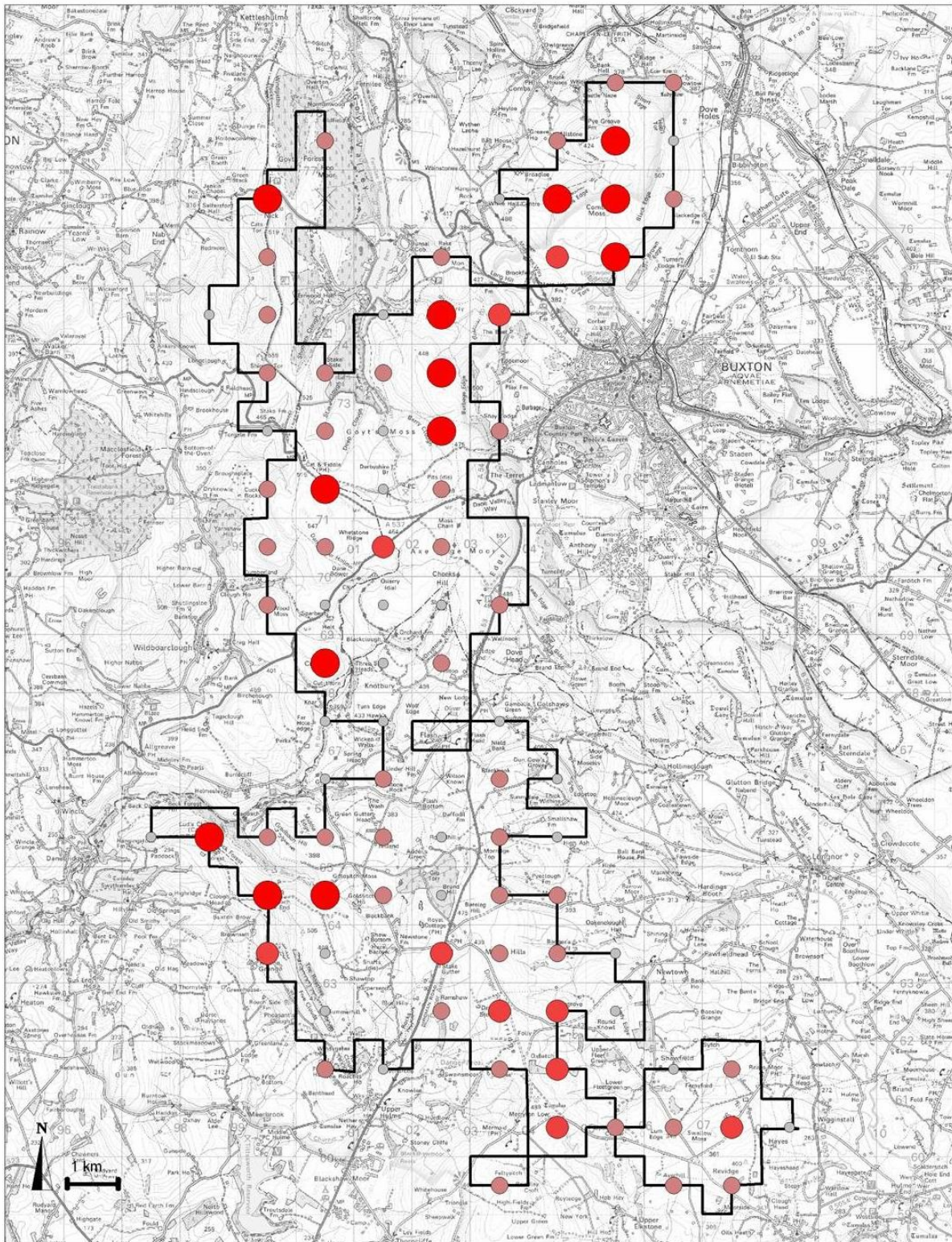
**2004 Peak District Moorland Breeding Bird Survey**

This map is reproduced from Ordnance Survey material with the permission of Controller of HMSO. Crown Copyright. All rights reserved. Peak District National Park Authority.

**Map 9b. Eastern Moors**  
2004 Distribution of Meadow Pipit

- 1 to 10
- 11 to 20
- 21 to 30
- 30 to 79
- × no count

▭ Survey Area

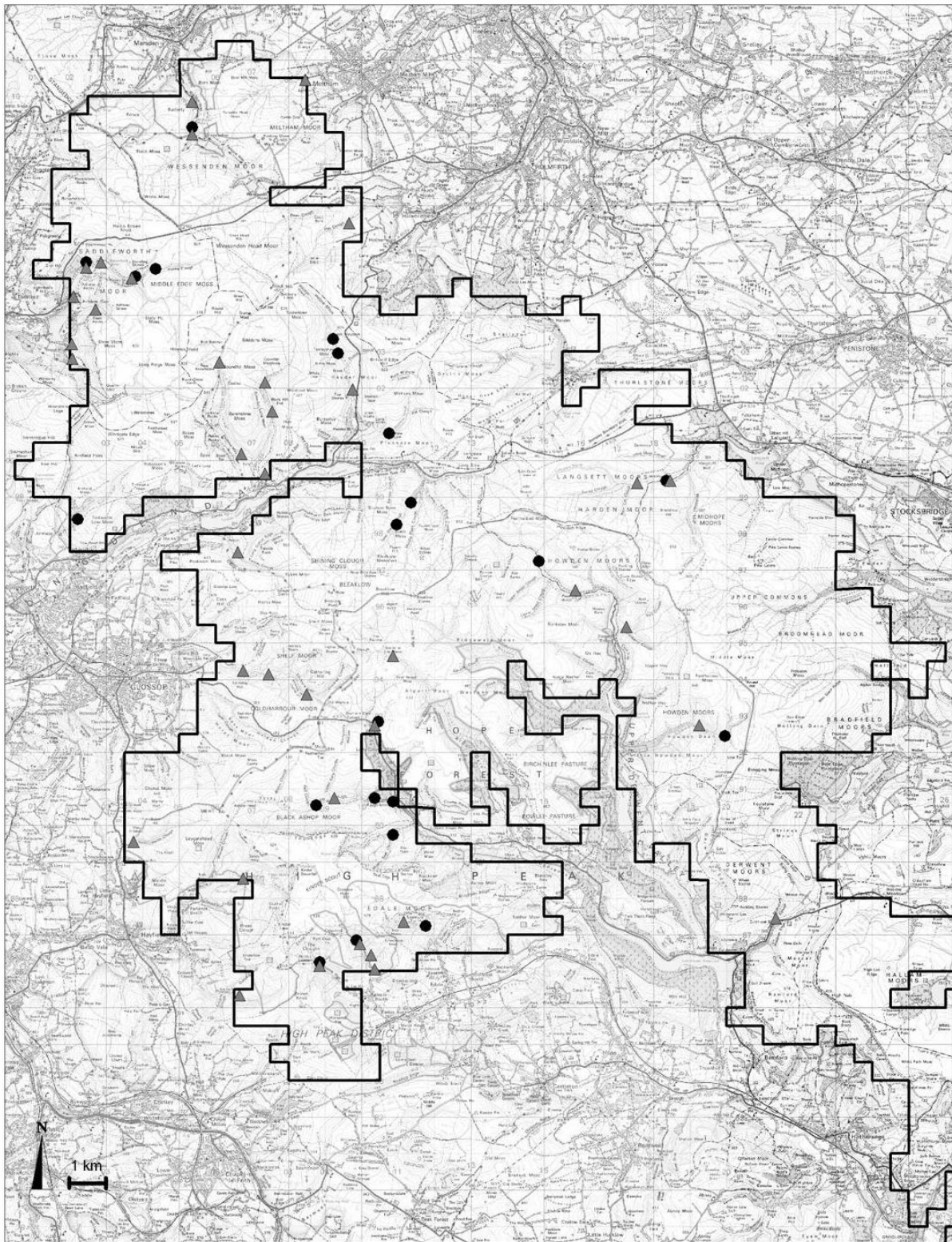


**2004 Peak District Moorland Breeding Bird Survey**

This map is reproduced from Ordnance Survey material with the permission of Controller of HMSO. Crown Copyright. All rights reserved. Peak District National Park Authority.

**Map 9c. SW Peak  
2004 Distribution of Meadow Pipit**

- 1 to 10
- 11 to 20
- 21 to 30
- 30 to 79
- ⊗ no count
- ▭ Survey Area

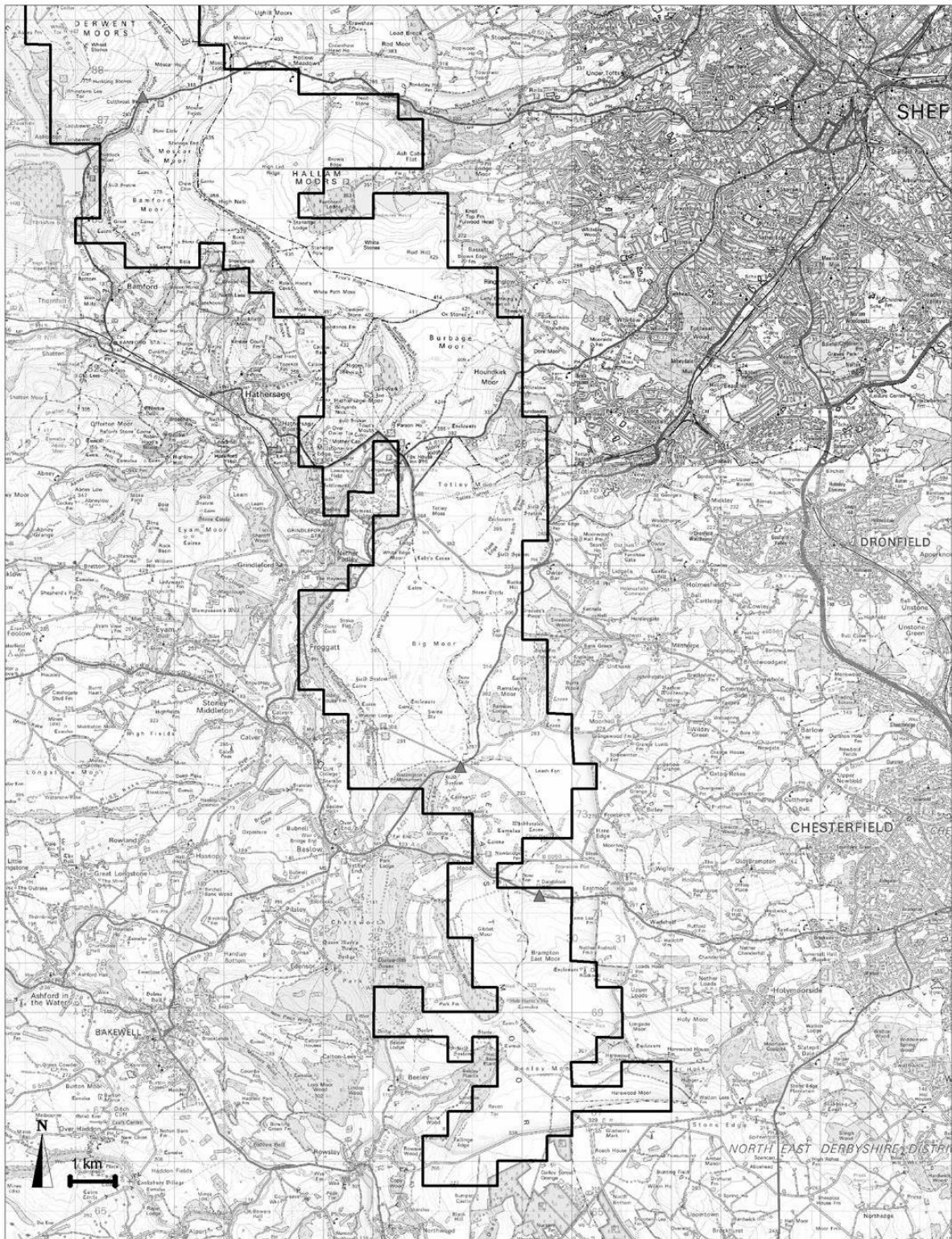


**2004 Peak District Moorland Breeding Bird Survey**

This map is reproduced from Ordnance Survey material with the permission of Controller of HMSO. Crown Copyright. All rights reserved. Peak District National Park Authority.

**Map 10a: Dark Peak**  
 2004 Distribution of breeding pairs of

- Dipper
- ▲ Grey Wagtail
- ▭ Survey Area



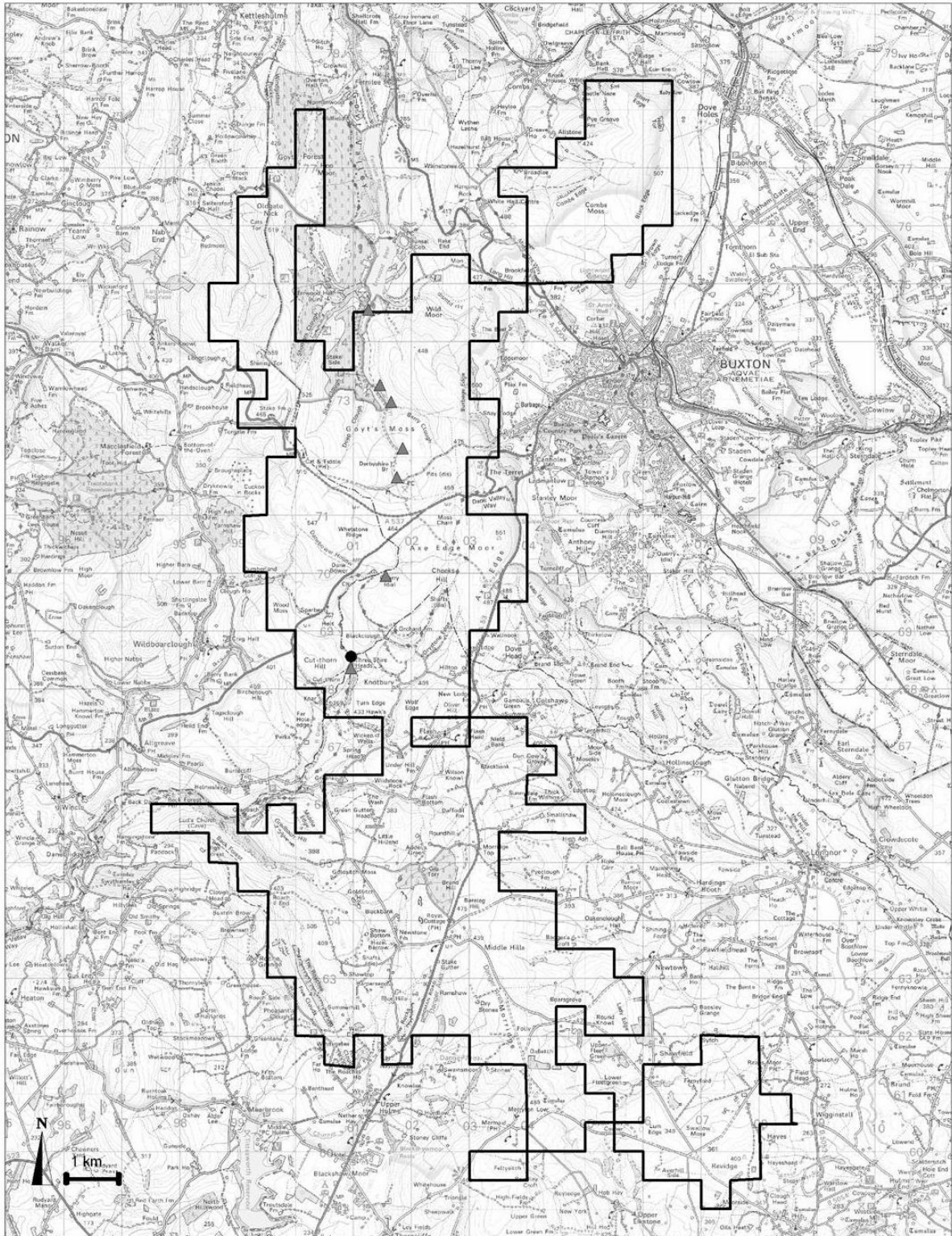
**2004 Peak District Moorland Breeding Bird Survey**

This map is reproduced from Ordnance Survey material with the permission of Controller of HMSO. Crown Copyright. All rights reserved. Peak District National Park Authority.

**Map 10b: Eastern Moors**

2004 Distribution of breeding pairs of

- Dipper
- ▲ Grey Wagtail
- ▭ Survey Area



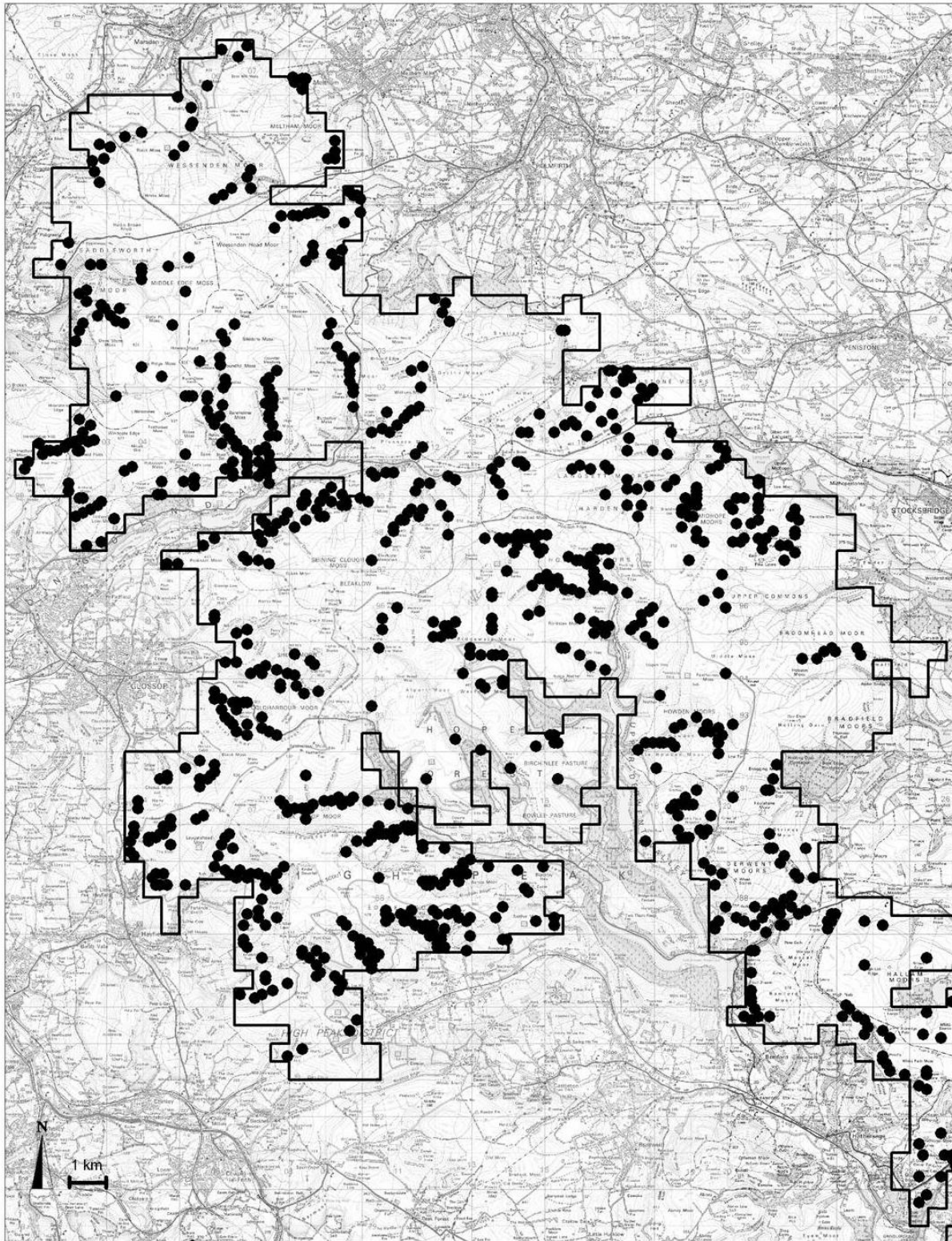
**2004 Peak District Moorland Breeding Bird Survey**

This map is reproduced from Ordnance Survey material with the permission of Controller of HMSO. Crown Copyright. All rights reserved. Peak District National Park Authority.

**Map 10c: SW Peak**  
 2004 Distribution of breeding pairs of

- Dipper
- ▲ Grey Wagtail

□ Survey Area

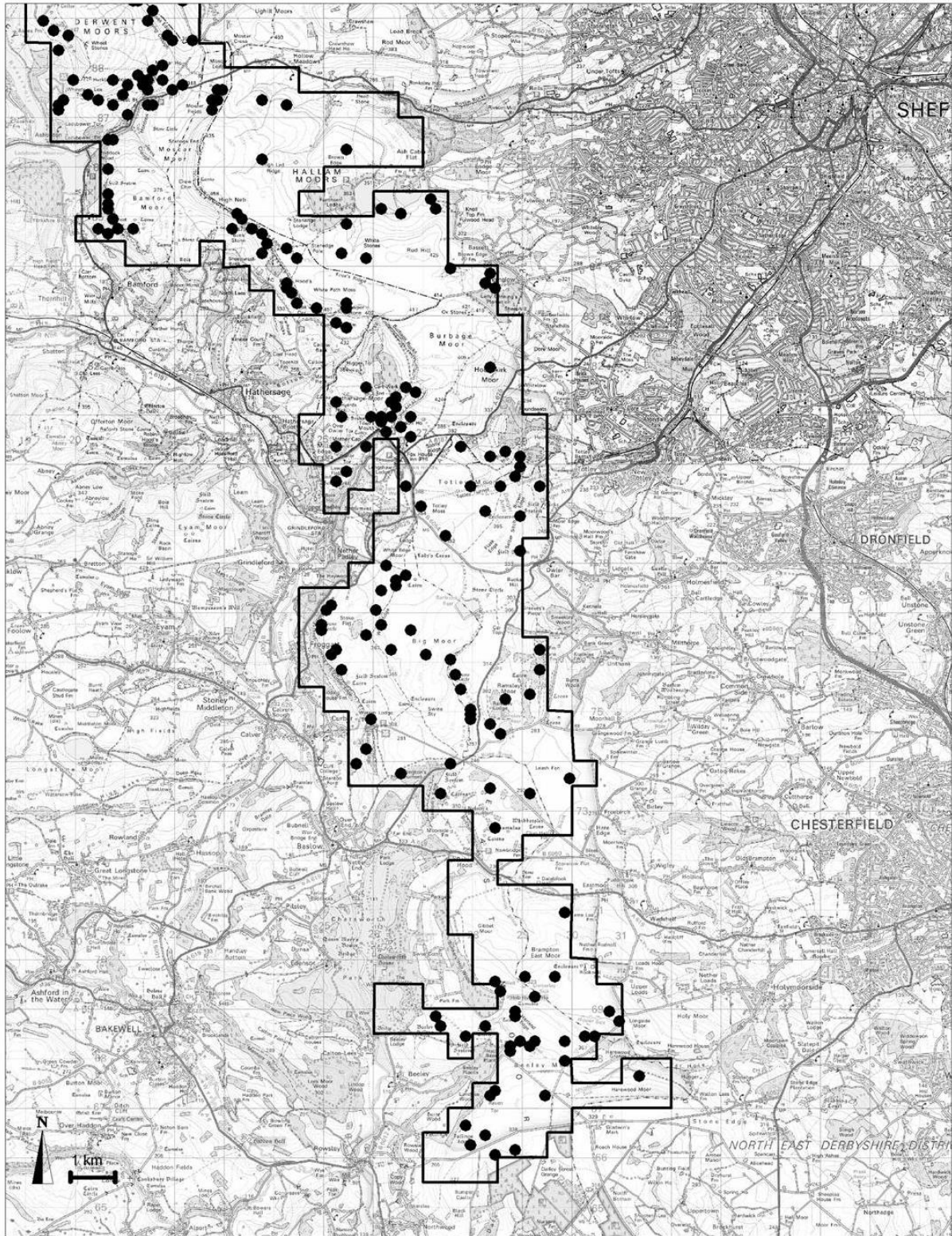


**2004 Peak District Moorland Breeding Bird Survey**

This map is reproduced from Ordnance Survey material with the permission of Controller of HMSO. Crown Copyright. All rights reserved. Peak District National Park Authority.

**Map 11a: Dark Peak**  
2004 Distribution of breeding pairs of

- Wren
- ▭ Survey Area

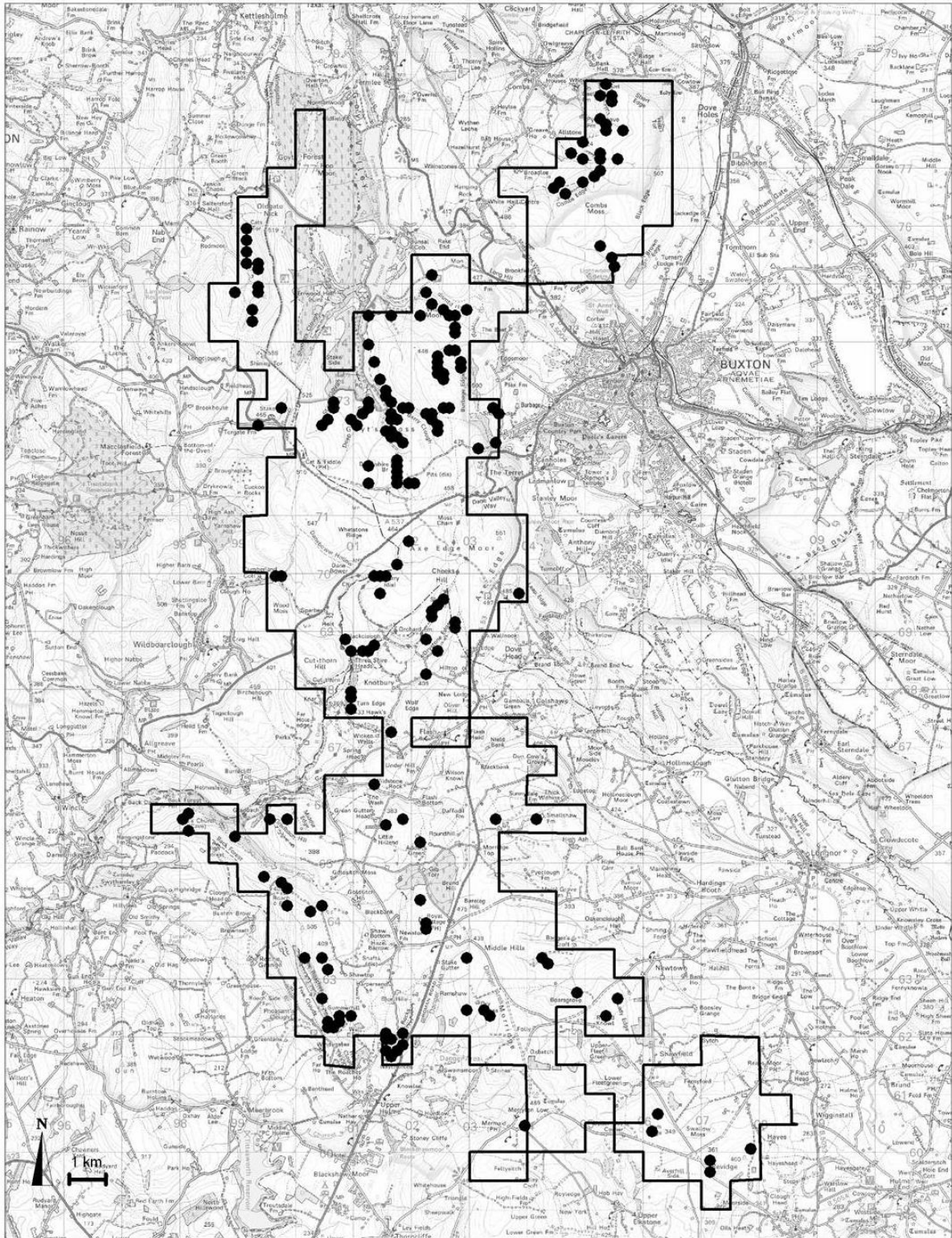


**2004 Peak District Moorland Breeding Bird Survey**

This map is reproduced from Ordnance Survey material with the permission of Controller of HMSO. Crown Copyright. All rights reserved. Peak District National Park Authority.

**Map 11b: Eastern Moors**  
2004 Distribution of breeding pairs of

- Wren
- ▭ Survey Area



**2004 Peak District Moorland Breeding Bird Survey**

This map is reproduced from Ordnance Survey material with the permission of Controller of HMSO. Crown Copyright. All rights reserved. Peak District National Park Authority.

**Map 11c: SW Peak**  
 2004 Distribution of breeding pairs of

- Wren
- ▭ Survey Area